

**TE PARI**

[www.tepari.com](http://www.tepari.com)



## Te Pari Scale Indicator Manual

Covering:

- T10 and T20 models including E series
- Te Pari Direct Support USB Card
- Installation and use of Te Pari Connect and Downloader Software
- Te Pari Standard and Heavy Duty loadbars

## Packed with your Te Pari Scale Indicator



**A** Te Pari Scale Indicator.

**B** Storage and carry case.

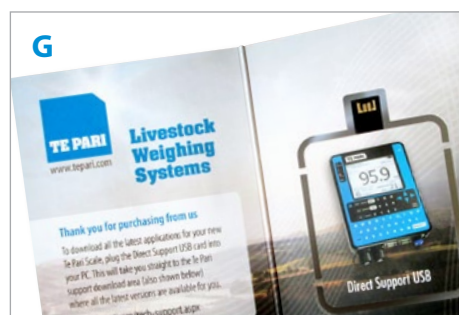
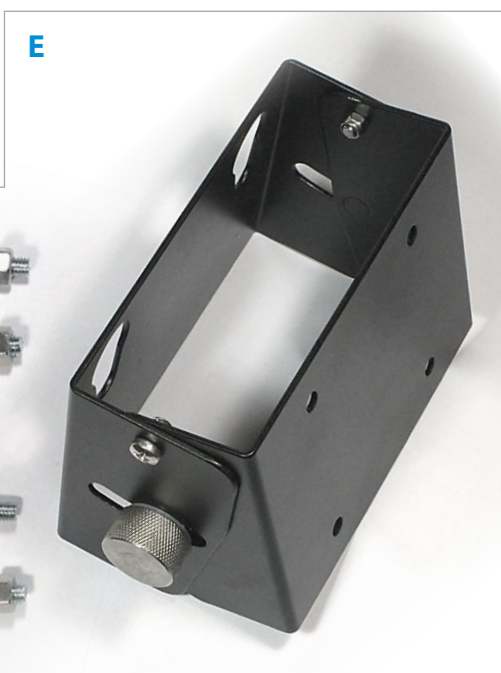
**C** Te Pari scale power supply - scale to mains power, while connected it also charges the internal battery.

**D** USB Wi-Fi dongle, plugs into a USB port on your PC to connect to your scale using Wi-Fi

**E** Te Pari scale mounting bracket and 2x "U" bolts for fixing the bracket to a post if required.

**F** 12 Volt power supply cables for connection to a battery power source.

**G** Te Pari Direct Support quick connect USB card.



## Contents

### General installation and getting started

Packed with your Te Pari Scale Indicator . . . . .	2
Physical installation . . . . .	4
Plugging it in . . . . .	4
Charging the battery . . . . .	4
Changing the screen contrast . . . . .	4
Scale facia - Overview. . . . .	5
The weigh screen, the main working area . . . . .	5
Navigating and selecting items . . . . .	6
Turning on your scale. . . . .	6
Creating a working file . . . . .	6
The MAIN MENU . . . . .	6

### The MAIN MENU - Its items and their settings

The screens accessed from the MAIN MENU . . .	7
Connections screen and Setting your correct loadbar model. . . . .	8
Full list of pre-configured loadbar models . . .	9
Recording screen . . . . .	9
Draft screen.. . . .	10
Statistics screen . . . . .	11-12
Dosing screen. . . . .	12
System screen . . . . .	13
Favourites screen . . . . .	14



Te Pari T20 E  
Scale Indicator

### PC and device connections and software

Connection options. . . . .	15
Installing the USB Wi-Fi Adapter and drivers on your computer . . . . .	15
Plugging in the Wi-Fi adapter . . . . .	16
Enabling Wi-Fi on your scale indicator . . . . .	16
Connecting using Wi-Fi. . . . .	16
Direct cable connection to your PC or device. . .	17
Connecting to a PC or device using Bluetooth . .	18
Getting the latest software for your scale using your Te Pari Direct Support USB card . .	18
The Te Pari Connect App . . . . .	19-23
Te Pari Downloader software installation . . .	24-32
Registration and Activation . . . . .	25
Connecting your scale to your computer . . .	26
The menu bars. . . . .	27
Adding and editing contacts. . . . .	27
Opening and viewing your files . . . . .	28
Exporting, printing and filtering. . . . .	29
NAIT file creator . . . . .	30
Uploading files to your scale indicator. . .	31-32
Deleting a file on your scale indicator . . . .	32

### Quick settings and other information

Quick Settings . . . . .	34-37
Racewell DR3 Auto Sheep Drafter. . . . .	34
Racewell HD3 and HD 6 Sheep Handler. . .	35
Te Pari Classic CDR3 Cattle Auto Drafter. . .	36
Te Pari Cattle Crush taking weights only . .	37
Te Pari Standard and Heavy Duty loadbars . .	38-40
The EID Status lights on E series models . . . .	41
Tips . . . . .	41
FCC Notice. . . . .	41
Care maintenance and storage. . . . .	42
Warranty . . . . .	42
Notes pages. . . . .	18, 23, 33, 43
Contact details . . . . .	Back cover



## Physical installation

1. Ensure the weighing site is level, sheltered from wind and the weighing platform does not touch the surrounding alleyway or race.
2. Your scale is supplied with an adjustable mounting bracket. For outside use we recommend mounting the bracket so the scale is at eye level and positioned so the scale's screen is out of direct sunlight.
3. The bracket can be mounted to a horizontal or vertical rail using the "U" bolts supplied, alternatively the bracket can be screwed directly to a wall or post.
4. Mount the bracket to a rigid structure that doesn't move when the platform is loaded. This makes the scale easier to operate.
5. Connect the loadbars to the scale.
6. Connect an external 12V power pack if required.
7. It is recommended to check the calibration of the system using an item of known weight.  
Note: material either on or leaning against the weigh platform will affect the zero point. For this reason it is good practice to zero the scale immediately before you start a session.

## Plugging it in

### EID Device Plug

E Series only.  
Your EID panel  
plugs in here

E series shown.  
The T10/T20 are  
half the depth.

### Load bar plugs

Cables from your  
loadbars are attached  
to the scale using  
these 2 ports. Shown  
here with their caps  
removed.

### COM ports (COM1 and COM2)

Both plug styles are shown here. These attach the  
scale to other devices like computers etc. Each port  
uses a different address, so if one won't connect  
you may need to try using the other port.  
The lower plug type shown is the new IP67 type.

### Internal EID power switch

On E Series only. Switch  
on to activate the scales  
internal EID reader  
and enable EID reading  
through the device  
attached to the EID  
device plug.

### Direct power plug

Attaches the scale to  
a mains supply with  
the included cable.

## Charging the battery and changing the screen contrast

### Charging the internal battery

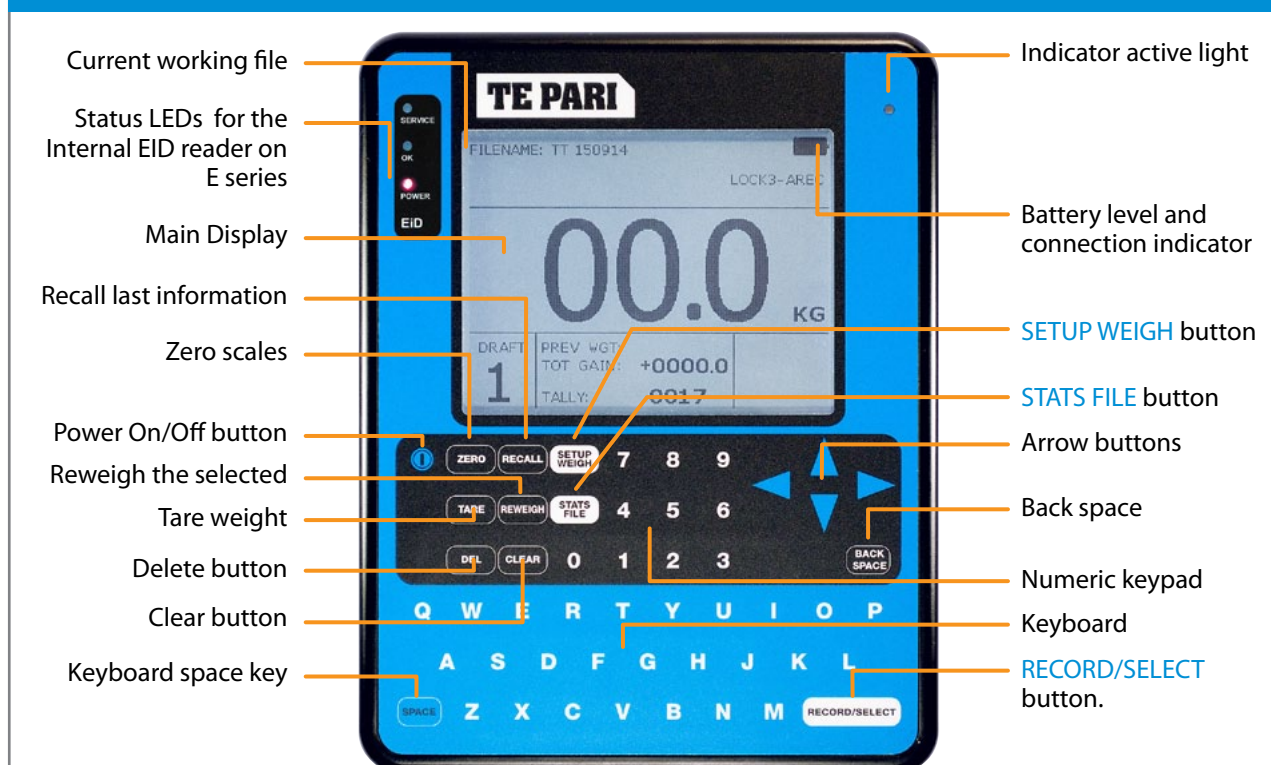
The scale's internal battery charges when the scale is plugged into a mains power supply.

To do this, remove the blue **Direct power plug** cap and connect the power cable supplied noting the alignment lug. Plug the 3 pin plug end into a wall socket and switch on at the wall. You may use your scale while it is charging.

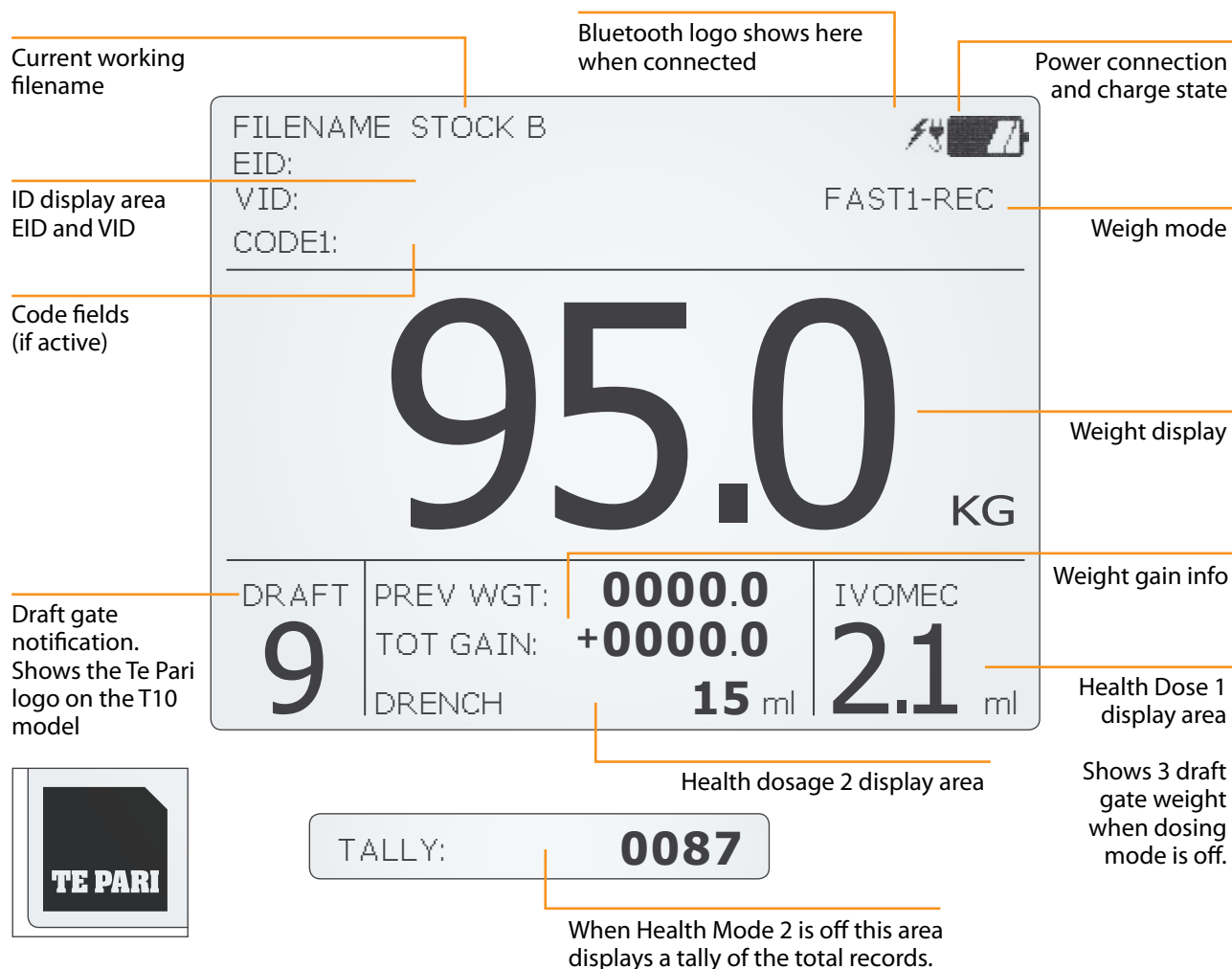
### Changing the screens contrast

With the scale charging, but turned off, press either the up or down arrow and the adjustment screen is displayed. Press the up or down arrows to change the display contrast. Press the **RECORD/SELECT** button to save the new contrast setting, or any other key to escape.

## Scale facia - Overview



## The weigh screen - The main working area

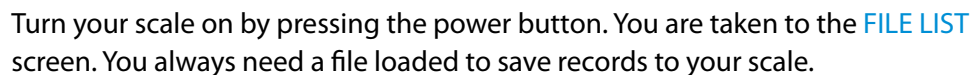


## Navigating and selecting items



The **RECORD/SELECT** button is used to confirm your setting, it works like the enter key on a computer confirming and saving a record or selected option.

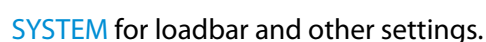
## Turning on your Te Pari Scale Indicator and creating a working file



FILES

You can go directly to the **Main Menu** without loading or creating a file by pressing the **SETUP/WEIGH** button, or access the **FILE LIST** screen from the main menu at any time.

**The MAIN MENU - T20 shown the T10 does not have the DRAFT option**



## The screens accessed from the MAIN MENU

Select a Favourite

FAV1 - CUSTOM NOT FAVOURITE

FAV2 -

FAV3 -

FAV4 -

☒ Edit a Favourite



Save and Exit

Draft Ranges | Draft by - **Weight**

Gate 1	0000.0	-	0050.0	OFF
Gate 2	0050.1	-	0070.0	OFF
Gate 3	0070.1	-	0090.0	OFF
Gate 4	0090.1	-	0300.0	OFF
Gate 5	0000.0	-	0000.0	OFF
Gate 6	0000.0	-	0000.0	OFF
Gate 7	0000.0	-	0000.0	OFF
Gate 8	0000.0	-	0000.0	OFF
Gate 9	0000.0	-	0000.0	OFF
Gate 0	EID not read			

AUTO EID: 10s

Save and Exit

**FILE LIST** 20-05-16 11:53:10  

NAME	DATE	TOTAL
STOCK A	20-06-12	125
STOCK B	15-05-12	10
EXPORTS	13-04-12	150

NEW **TYPE IN A NEW NAME** FILE 04 OF 03

FILENAME: Sheep-02 TOTAL: 1632

Weight Stats kg:	Weight Gain Stats kg:
Maximum 113	Maximum 59
Minumin 29	Minumin 20
Average 86	Average 17

↔

VID	DATE/TIME OF RECORD ▼	
NO VID	12-06-17	12:19
NO VID	12-06-17	12:18
1	12-06-17	12:08
2	12-06-17	12:07
3	12-06-17	12:07
2	10-06-17	12:07
1	10-06-17	12:07
1	08-06-17	12:06

Draft Stats Save and Exit

Recording

Tag Recording **ON**

Weight Gain Total Gain

Auto Visual Tags ON

Starting at number 0001

Code Recording OFF

☒ Save and Exit

Dose Amounts

Dose 1 ON

Name Ivornec

Type Calculated

Rate 10 ml per 100 kg

Dose 2 OFF

Name **Ivornec**

Type Fixed Dose

Rate 25 ml

Save and Exit

Connections

Com Plug 1 **AUTO DRAFTING**

Com Plug 2 PHONE/COMPUTER

Bluetooth PHONE/COMPUTER

Loadbar Model T1000

Description Te Pari DR3 Drafter

☒ Save and Exit

System

Weighing Speed - **SHEEP**

Duplicate EIDS - YES

Weighing Precision - NORMAL

Weighing Units - KG

Reweigh Threshold - 50%

Language - ENGLISH

Date Format - DD/MM/YYYY

Date and Time - 21 / 01 / 2017 20:10:52

Advanced System Save and Exit

## The Connections screen and setting your correct loadbar model - Important

Connections

Com Plug 1	PHONE/COMPUTER
Com Plug 2	PHONE/COMPUTER
Bluetooth	PHONE/COMPUTER
Loadbar Model	T1000
Description	Te Pari DR3 Drafter

✓ Save and Exit



Arrow to **CONNECTIONS** in the **MAIN MENU** and press **RECORD/SELECT**.

Usually **Com Plug 1** is set to **PHONE/COMPUTER**.

Arrow to **Loadbar Model** then use the left and right arrows to select your correct loadbar model from the list. It is important that this is set correctly for weighing accuracy.

Arrow to **Save and Exit** and press **RECORD/SELECT** to return to the **MAIN MENU**.

### List of connection options for Com Plug 1 and 2:

AUTO DRAFTING . . . . For the connection to a cattle or sheep auto drafter.  
 WEIGHT OUTPUT . . . . Sends the weight information on command from a PDA or device.  
 CODE 1 IN . . . . . Displays Code 1 data in the Code 1 data field of the main screen.  
 OFF. . . . . Turns the port off.  
 PHONE/COMPUTER . . For a direct connection to your phone, computer or mobile device.  
 EID READER . . . . . Input from an EID stick or panel reader.

The **Bluetooth** port only has some of the options of this list.

### Full list of loadbar presets and their description available in the Loadbar Model option:

T1000	Te Pari DR3 Drafter	CUSTOM	IC2000	Iconix 600mm
T4000	Te Pari HD Bars/Cells	AWT 2C AW2C	IC3000	Iconix HD 1000mm
T5000	Te Pari Cattle Drafter	AWT10K Avery Weightronix 10K	IS2000	Te Pari 600mm RED
T600	Te Pari 600mm	G2000 Gallagher 600mm	IS3000	Te Pari HD 1000mm RED
T6000	Te Pari Overhead Cells	G3500 Gallagher HD 1000mm	SW 10K	Digistar SW10000
T250	Te Pari Suspension	MP600 TruTest MP600	SW 14K	Digistar SW14000
TECHN	Technocampo	MP1010 TruTest MP1010	SW3300	Digistar SW3300
LBS	LBS Cells x4	SHD TruTest SHD Cells	SW6600	Digistar SW6600
AG75K	Cardinal AG75K 4	HD1010 TruTest HD 1010		
THTC5 4	Cardinal THTC5 4	XHD TruTest XHD		



## The Recording screen

Recording	
Tag Recording	ON
Weight Gain	Total Gain
Auto Visual Tags	ON
Starting at number	0001
Code Recording	OFF
<input checked="" type="checkbox"/> Save and Exit	



Arrow to **RECORDING** in the **MAIN MENU** and press **RECORD/SELECT**.

The **RECORDING** menu lets you select your preferences for tag, weight and code recording. Settings for items are only shown when they are active.

Use the **LEFT** and **RIGHT ARROWS** to change a setting.

### Tag Recording

Options are **ON** or **OFF**. When set to **ON** the EID and VID fields are shown on the main working screen. An EID, VID or both need to be read or entered before a reading can be saved.

### Weight Gain

Options are **TOTAL GAIN**, **PREV WGTS** (previous weights) or **GAIN/DAY**. Sets the option for weight gain calculation.

### Auto Visual Tags

Options are **ON** or **OFF**. When set to **ON** the **Starting at number** field is shown and you can key in your preferred starting number.

The VID number issued increases from your starting number by 1 each time one is assigned.

Recording - Code Settings	
<b>Code 1</b>	ON
Name	SH24
Default Value	C1
<b>Code 2</b>	ON
Name	CAT2
Default Value	C2
<b>Code 3</b>	OFF
<b>Lookup Codes</b>	OFF
<input type="checkbox"/> Save and Exit	

### Code Recording - an overview

Code recording lets you assign and activate up to 3 Codes to refer to and draft by.

**Lookup Codes ON** or **OFF** activates retrieval of assigned code information from an animals tag.

When you have finished setting your options Arrow to **SAVE and EXIT** and press **RECORD/SELECT** to return to the main menu.

## Set your Draft Ranges on a T20 scale indicator

Draft Ranges		Draft by - <b>Weight</b>	
Gate 1	0000.0 - 0050.0	OFF	
Gate 2	0050.1 - 0070.0	OFF	
Gate 3	0070.1 - 0090.0	OFF	
Gate 4	0090.1 - 0300.0	OFF	
Gate 5	0000.0 - 0000.0	OFF	
Gate 6	0000.0 - 0000.0	OFF	
Gate 7	0000.0 - 0000.0	OFF	
Gate 8	0000.0 - 0000.0	OFF	
Gate 9	0000.0 - 0000.0	OFF	
Gate 0	EID not read		
AUTO EID: 10s			

Save and Exit



Arrow to **DRAFTING** in the **MAIN MENU** and press **RECORD/SELECT**.

Arrow down to and key in the weight ranges you wish for your draft gates. Ensure the highest weight set is more than the heaviest animal likely to be weighed.

Arrow to **Save and Exit** and press **RECORD/SELECT** to return to the **MAIN MENU**.

Draft Ranges		Draft by - <b>Code</b>	
Gate 1	CODE C0	OFF	
Gate 2	CODE C1	OFF	
Gate 3	CODE C2	OFF	
Gate 4	CODE C3	OFF	
Gate 5	CODE C4	OFF	
Gate 6	CODE C5	OFF	
Gate 7	CODE C6	OFF	
Gate 8	CODE C7	OFF	
Gate 9	CODE X	OFF	
Gate 0	EID not read		
Gate 0	OTHER		
AUTO EID: OFF			

Save and Exit

Further Information:

Draft by options are either **Draft by Weight**, **Draft by Code** or **OFF**. This field is already highlighted when the screen opens. The draft by code option is only available when enabled, to do this: On the **Recording** screen set **Tag Recording** to **ON** then; Enter the **Code Recording** options screen and set **Code 1** to **ON**.

The hold column is only shown when **AUTO DRAFTING** is the active option on the **Connections** screen. You can set hold for each gate to either **ON** or **OFF**.

When a gate has hold set to **ON** the draft is held until the **RECORD/SELECT** button is pressed.

While held you can arrow to any entry on the main screen and adjust its properties. This lets you make on the fly decisions based on observations during your session.

### AUTO EID:

This assigns a false EID number to an animal that has a damaged or missing tag. Options are **OFF** or a delay time of **5s**, **10s**, **20s** or **30s**.

**10s** is the default option.

The delay sets the amount of time a tag read is unsuccessful before a false EID is assigned.

## The Statistics screen

FILENAME: Sheep-02		TOTAL: 1632	
Weight Stats kg:		Weight Gain Stats kg:	
Maximum	113	Maximum	59
Minimin	29	Minimin	20
Average	86	Average	17
VID	DATE/TIME OF RECORD ▼		
NO VID	12-06-17	12:19	
NO VID	12-06-17	12:18	
1	12-06-17	12:08	
2	12-06-17	12:07	
3	12-06-17	12:07	
2	10-06-17	12:07	
1	10-06-17	12:07	
1	08-06-17	12:06	
Draft Stats		Save and Exit	

Draft Stats		Filename Sheep2	Total 3750
	Count	AVG Weight	TOT Weight
Gate 1	2	30.2	60.5
Gate 2	1	59.5	59.5
Gate 3	1	83.5	83.5
Gate 4	7	93.5	654.5
Gate 5	1	102.0	102.0
Gate 6	3	113.0	339.0
Gate 7			
Gate 8			
Gate 9			
All Weights in kg			
<input checked="" type="checkbox"/> Weight Stats		Save and Exit	

Wt Stats		Filename Sheep2	Total 3750
	Weight range	Count	Avg Weight
Gate 1	0000.0 - 0050.0	2	30.2
Gate 2	0050.1 - 0080.0	1	59.5
Gate 3	0080.1 - 0090.0	1	83.5
Gate 4	0090.1 - 0100.0	7	93.5
Gate 5	0100.1 - 0110.0	1	102.0
Gate 6	0110.1 - 0120.0	3	113.0
Gate 7	0120.1 - 0250.0	0	0
Gate 8	0000.0 - 0000.0	0	0
Gate 9	0000.0 - 0000.0	0	0
All Weights in KG			
Draft Stats		<input checked="" type="checkbox"/> Save and Exit	



Arrow to **STATISTICS** in the **MAIN MENU** and press **RECORD/SELECT**. Or press the and press **STATS FILE** button at anytime.

To view the details for an item press the **STATS/FILE** button, the entries are highlighted and you can arrow to them. Pressing the left or right arrows will scroll across all that entries data, the following items are shown with the **VID** column fixed at the left, shown overleaf.

**DATE/TIME OF RECORD**    **WEIGHT**  
**CODE1**                      **CODE2**  
**CODE3**                      **P.WEIGHT**  
**TOT GAIN**                  **HEALTH 1**  
**HEALTH2**                  **EID**  
**PID**                          **DRAFT**

You can sort by any category. The small triangular arrow ▼, highlighted above beside the category, tells you what you are sorting by. Pressing the **RECORD/SELECT** button moves the arrow to another category.

To change the sort direction between ascending to descending and back again, press the **BACKSPACE** button. The arrow alongside the category changes to show the sort direction, ▼ becomes ▲.

Pressing the **STATS/FILE** button removes the highlight from the main statistics screen and lets you arrow to the **Draft Stats** screen, and onto the **Weight Stats** screen, and then back and forth between them.

### Running a "What if" scenario

To see what happens to draft weights and quantities, without changing your stored recorded data.

You can edit the weight ranges in the **Wt Stats** screen then switch to the **Draft Stats** screen to see what changes to the weight ranges would have made to the draft.

## The Statistics screen

VID	WEIGHT	CODE1	CODE2
00123456789			

◀ ▶

VID	CODE3	P.WEIGHT	TOT GAIN
00123456789		123.0kg	60.0kg

◀ ▶

VID	HEALTH 1	
00123456789	IVOMEC	15ml

◀ ▶

VID	HEALTH 2	
00123456789	DRENCH	80ml

◀ ▶

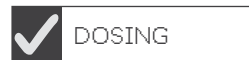
VID	EID ▼	PID	DRAFT
00123456789	123456789	STOCKB	H

Data columns in the Statics menu.

Use the left and right arrows to scroll across the data columns as shown here.

## The Dosing screen

Dose Amounts	
Dose 1	ON
Name	Ivomec
Type	Calculated
Rate	10 ml per 100 kg
<hr/>	
Dose 2	OFF
Name	Ivomec
Type	Fixed
Rate	25 ml
Save and Exit	



Arrow to **DOSING** in the **MAIN MENU** and press **RECORD/SELECT**.

Both the **Dose 1** and **Dose 2** areas work in the same way.

Name your dose and, for type, select either **Fixed Dose** or **Calculated Dose**. If you select a fixed dose type, Key the fixed amount in ml for each dose in the rate field.

If you select the **Calculated Dose** type, arrow to **Rate** and type in both the amount in ml and per weight fields. The scale calculates the dose for you based on these figures.

Arrow to **Save and Exit** and press **RECORD/SELECT** to return to the **MAIN MENU**.



If you have a Revolution Dosing or Injection Gun the **Dose 1** field controls its dose type and calculation function.

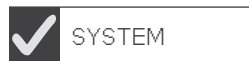


## The System screen

System	
Weighing Speed -	SHEEP
Duplicate EIDS -	YES
Weighing Precision -	NORMAL
Weighing Units -	KG
Reweight Threshold -	50%
Language -	ENGLISH
Date Format -	DD/MM/YYYY
Date and Time -	21 / 01 / 2017 20:10:52

Advanced System

Save and Exit



Arrow to **SYSTEM** in the **MAIN MENU** and press **RECORD/SELECT**.

Usually the **Weighing speed** is set to **SHEEP** or **CATTLE** depending on your auto drafter type.

Set the preferred language, date format and the current date and time.

Arrow to **Save and Exit** and press **RECORD/SELECT** to return to the **MAIN MENU**.

### Further on System settings:

#### DUPLICATE EIDS:

Options are **YES**, the default, or **NO**. If set to **YES**, when a duplicate EID is scanned while autodrafting it will overwrite the duplicate record. If **NO** it will stop and wait for operator confirmation.

**Weigh Precision** is either **NORMAL**, for 0.5 kg increments or **FINE**, for 0.1 kg.

**Weighing Units** can either be **LBS** or **KG**

**Reweight Threshold** sets the amount a weight can change before the **REWEIGH** function is activated, Press the **REWEIGH** button on the scale to reweigh the animal. If you don't do this when auto drafting the last recorded weight is used. The default setting is **50%**.

Reweight Threshold only functions when a weight range has hold activated.

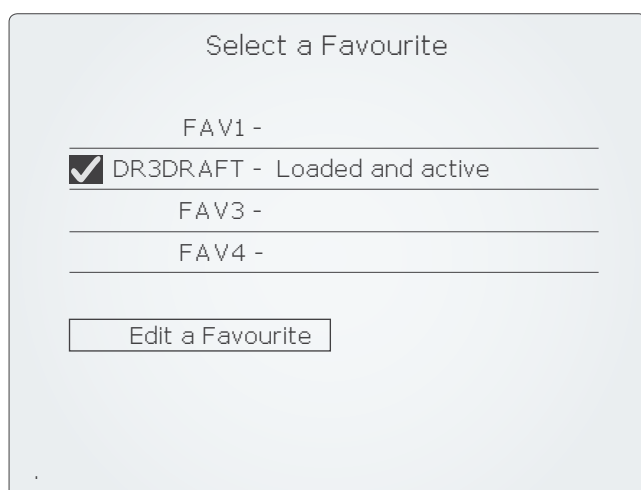
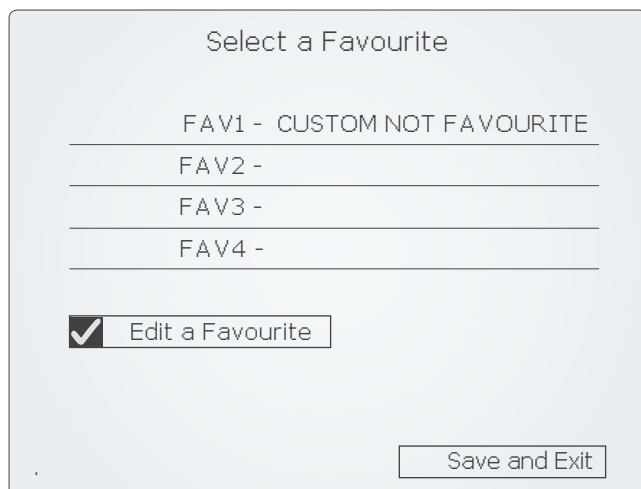
The **Advanced System** screen.

In normal operation and setup it is not necessary to enter this menu.

Support will advise you need to change setting in this area.

## The Favourites screen

The Favourites feature lets you store and recall your scale settings for your most common tasks. Save your favourites settings once you have completed setting up your scale indicator.



**BACKSPACE** out the existing name and key in your new name of up to eight characters. **DR3DRAFT** in this example.

Press **RECORD/SELECT**. You will be prompted **YES** or **NO** to continue.

You are returned to the **Select a Favourite** screen. The new favourite is saved and Loaded and active is displayed alongside it.

At any time you wish to load a favourite, arrow to the favourite you wish to load in the **Select a Favourite** screen and press **RECORD/SELECT** to load it.

In **Edit a Favourite** screen you can edit the name of an existing favourite or overwrite it with the current scale settings. Use the **BACKSPACE** key and keypad to edit an existing name then save and exit.

### Tips

You can create a base favourite for each of your 4 main tasks. You can then load them and tweak the settings from there to suit your sessions needs.

A loaded favourite will not change when you alter settings, you need to overwrite the favourite to save any changes made after loading it. If you have made changes to a favourite after loading it **CUSTOM NOT FAVOURITE** is displayed alongside its name.

When you have finished editing or adding a favourite, arrow to **Exit** and press **RECORD/SELECT**.

## Connection options

### General description of connection options

Your Te Pari scale has real versatility when it comes to connection methods, this means that ideal connection methods exist for all manner of situations. The next few pages describe how to connect to your Te Pari Scale using the various options available, they are:

**Wi-Fi** - If your computer or device already has Wi-Fi then you can use this to connect, if this is the case you can skip this page and go to [Connecting](#) on the next page, if you do not have Wi-Fi on your computer, you need to install the USB Wi-Fi adapter supplied to use this connection method. Wi-Fi is the preferred connection as almost every mobile device and recent computers have this capability.

**Physical cable connection** - Cable connection from your scales COM port to either a serial, or USB port on your computer. The setup for this method for this is described on page 22.

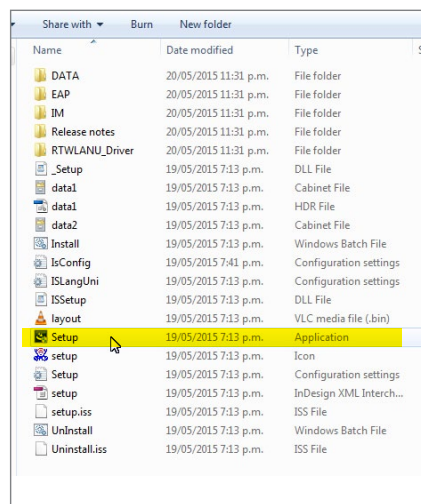
## Installing the USB Wi-Fi adapter drivers on your computer

**Note:** Users of Windows 8 and above do not need to install the drivers as they are included with Windows so you can skip this step and can go to the top of the next page.

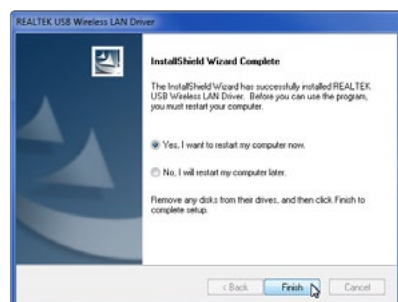
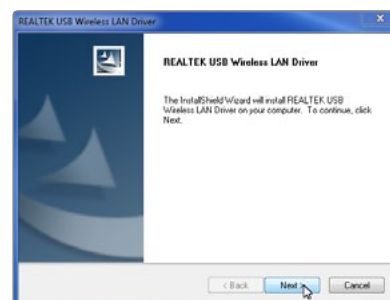
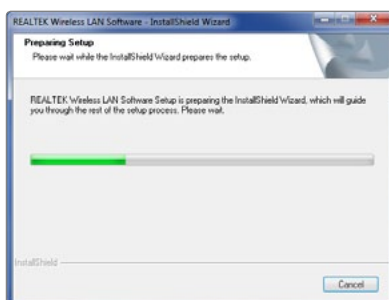


If your computer does not have Wi-Fi, installing the supplied adapter will make your computer Wi-Fi capable and so allow you to connect to your scale using it

Before inserting the adapter you need to install the adapter drivers. Go to the Te Pari Support site using the Direct Support USB key supplied or by typing in the URL and download the USB Wi-Fi Driver files.



From the downloaded drivers folder - [Scale\\_USB-WiFi-Drivers](#) - double click the [Setup](#) file, highlighted at the left. The preparation and driver installation will take place. Click [Next](#) at the prompts as required. Some steps during the installation may take several seconds to complete.

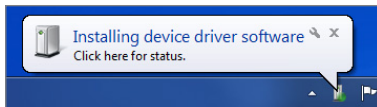


When the driver installation is complete a computer restart is required. Select the [Yes, I want to restart my computer now](#) option and click [Finish](#) to restart and complete the process.

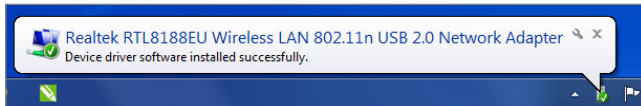
The driver files are now on your computer and available for Windows to use. When the adapter is plugged into a USB port they will be loaded for that port.

## Plugging the USB Wi-Fi adapter into your computer

If you already have Wi-Fi on your computer skip this step and continue to [Enable Wi-Fi on your scale](#) below. Insert the USB Wi-Fi adapter into a spare USB port on your computer.

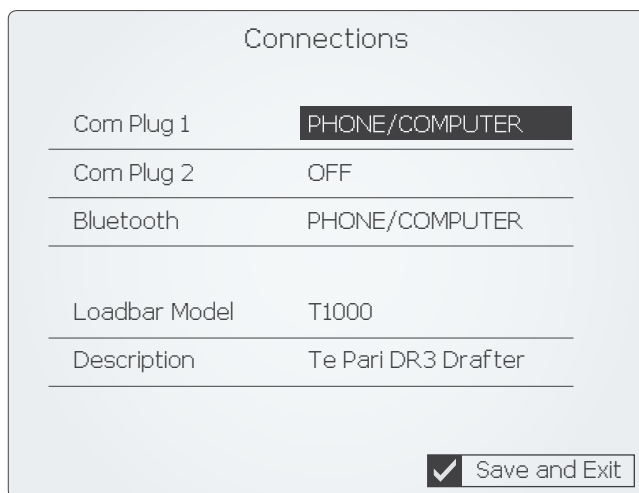


Once inserted notification appears advising that the device driver software is installing for the port you have plugged the USB Wi-Fi adapter into.



The successful installation notification box appears when complete. **Note:** If you insert the adapter into a differing USB port, the drivers will auto install for that port too, the drivers only install once for each port.

## Enabling Wi-Fi on your Te Pari Scale Indicator - Settings



Arrow to [CONNECTIONS](#) in the [MAIN MENU](#) and press [RECORD/SELECT](#).

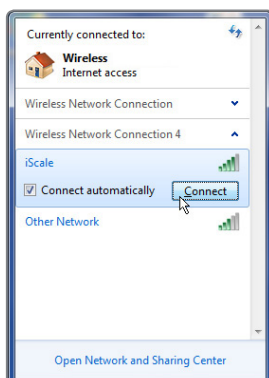
Arrow to and set [PHONE/COMPUTER](#) alongside the port you wish to use for your Wi-Fi connection. Because you can only connect to one Wi-Fi connection at a time we recommend using [Com Plug 1](#).

The Wi-Fi is now active on that port, Arrow to [Save and Exit](#) and press [RECORD/SELECT](#) to return to the [MAIN MENU](#).

## Connecting using Wi-Fi



Click on the network icon in the bottom right of the Windows taskbar. This will pop up the network connections dialogue box. [iScale](#) will appear in the list.



Click on the [iScale](#) entry, and click [Connect](#).

Working with files is handled in your application. Now the connection is made you can run Te Pari Downloader to view and work with your files, or if using a smart phone or other device Te Pari Connect to download and email on files ect.

### Important Notes.

Only one active Wi-Fi connection at a time should be connected to your scale, you should disconnect other connections if present. The connection to the scale is open and requires no password, however if you are prompted for one - use the default which is [abcd1234](#)



## Physical cable connection of your Te Pari Scale Indicator to your computer or device

This form of connection is the most stable and reliable. Using the supplied cables, follow the flow chart to make a direct connection from your Scale to a serial or USB port on your computer.

You should connect your scale to your computer prior to running the downloader software, though the software can re-scan communication ports for you.



Using the serial to serial cable.



For either connection plug one end of the serial to serial cable in to the Scales COM1 port

Serial to USB connection

Serial to serial connection



Plug the other end of the serial to serial cable into the serial plug end of the serial to USB cable



Plug the other end of the serial to serial cable into a serial port on your computer.

Physical serial to serial connection is made.



Plug the USB end of the serial to USB cable into a USB port on your computer.

Physical serial to USB connection is made.

### Connections

Com Plug 1	PHONE/COMPUTER
Com Plug 2	PHONE/COMPUTER
Bluetooth	PHONE/COMPUTER
Loadbar Model	T1000
Description	Te Pari DR3 Drafter

☒ Save and Exit

Turn on your scale and on the Connections screen set **Com Plug 1** to **PHONE/COMPUTER**.

## Getting the latest software for your scale using your Te Pari Direct Support USB card

Packed with your Te Pari Scale is a quick connect USB card, shown below. To use it remove the USB section from the back page of the card and, with an active internet connection, plug it into a spare USB port on your PC.

You will be taken to the Te Pari Support software download area where you can download the latest versions of all the Te Pari applications and drivers for use with your scale and its components. The URL for the support centre is also printed on the card so you can type it into your web browser to go there.

**Current applications are:**

## Te Pari connect for smart phones and devices

Allows you to load files from your scale to your smart phone or tablet and forward them by email

## Te Pari Downloader

A comprehensive application for working with your sessions files and records on your personal computer.

## Drivers for your mini USB Wi-Fi adapter

You should download these drivers for Windows 7 and earlier. These drivers may not be required for users with Windows 8 and above



Notes

## The Te Pari Connect App

Connections

Com Plug 1	PHONE/COMPUTER
Com Plug 2	PHONE/COMPUTER
Bluetooth	PHONE/COMPUTER
Loadbar Model	T1000
Description	Te Pari DR3 Drafter

☒ Save and Exit



The Te Pari connect App allows you to load files from your scale indicator to your smart phone or tablet and view them or email them on.

Turn on your scale and enable its Wi-Fi.

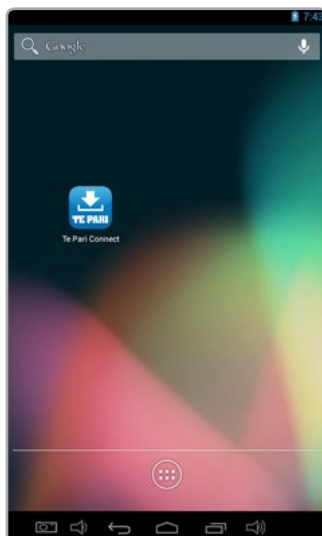
On the [Connections](#) Screen set the [Com Plug 1](#) setting to [PHONE/COMPUTER](#)

Go online on your mobile device and download and install the Te Pari Connect App onto it.

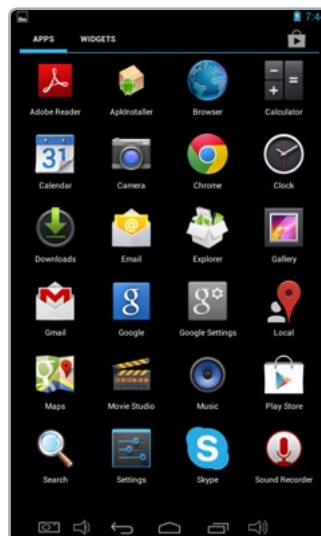
Te Pari Connect is available for smart devices running Android and Apple iOS.

You can download the Te Pari Connect App free from Google Play - for Android or the Apple Store - for Apple devices.

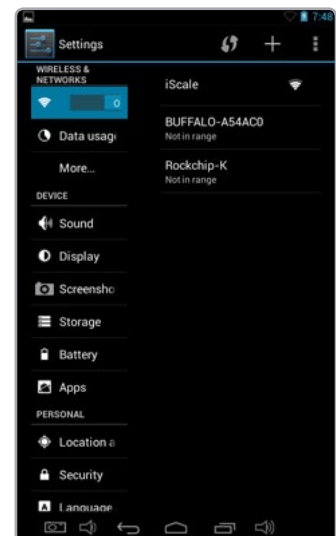
The screen shots shown in this guide are of the Android version. Screens will vary depending on both the type of device you are using and the operating system it is running, however the same options and results will be shown.



The Te Pari Connect App is installed it will appear in your Apps area

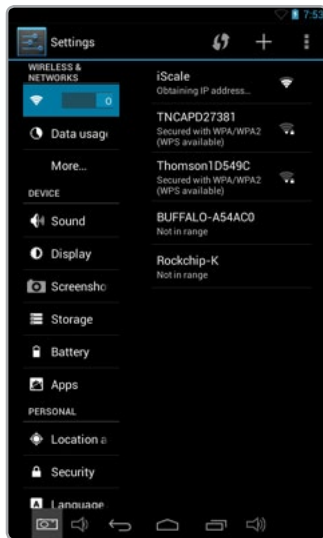


You need to connect your device by Wi-Fi to your Scale. Tap on your settings button.

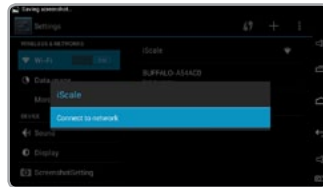


Turn Wi-Fi on. Your scale should appear on the list. You may need to disconnect other Wi-Fi connections as you can only connect to one Wi-Fi source at a time.

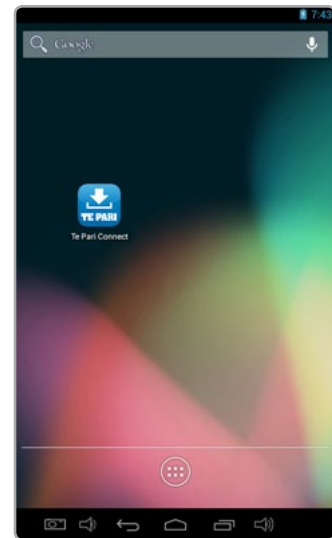
## The Te Pari Connect App



Tap the iScale Connection to connect to it - sometimes the connection will happen automatically for you.



Once the connection is established you are ready to run the Te Pari Connect App.

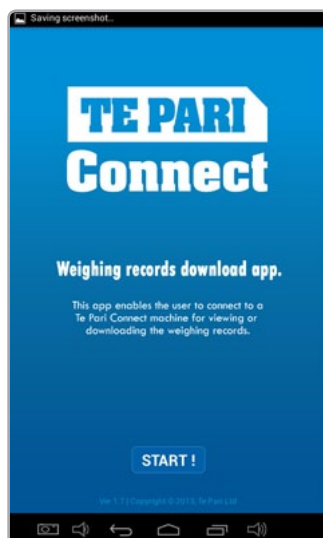


From the App list tap the Te Pari Connect icon.

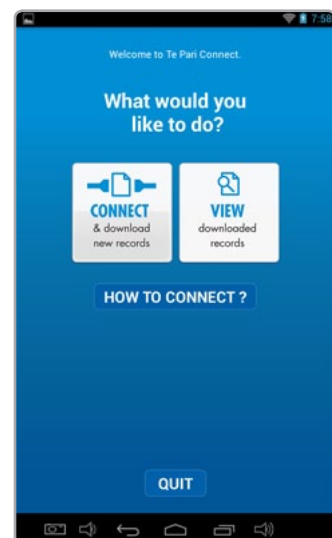
Once you have established a connection to the Scale it be available to connect to in future from the Wi-Fi list on your phone or device when you are in range.



The splash screen is displayed as the App launches.



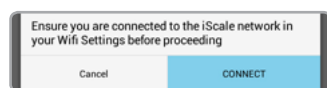
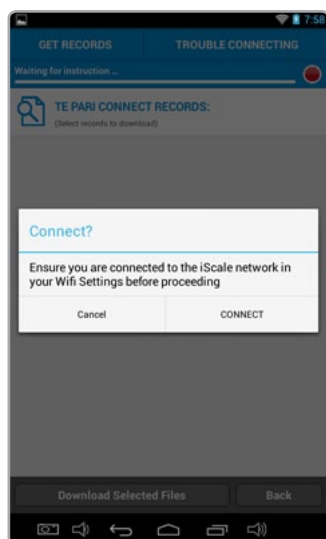
Once launched it prompts you to tap start to continue.



You are now prompted to either connect and download new records, view downloaded records or quit. Tap Connect.

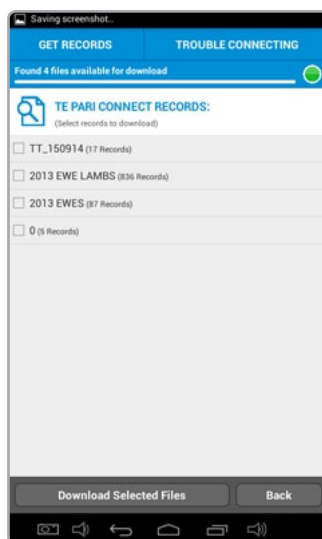


## The Te Pari Connect App



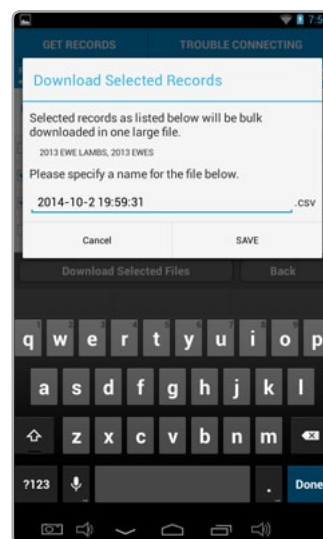
A prompt reminds you to ensure you are connected using your devices Wi-Fi connection.

Tap Connect. The button in the top right goes from red to green when connected.



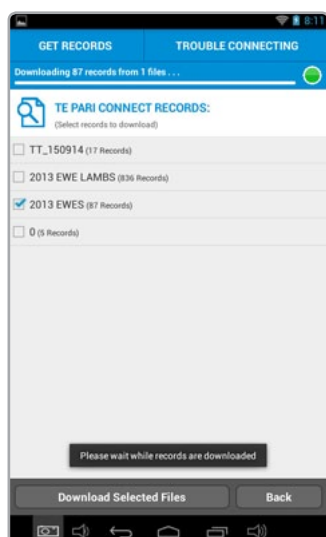
After a few seconds a list of the files on the scale is displayed.

Tap the checkbox of the file or files you wish to download.



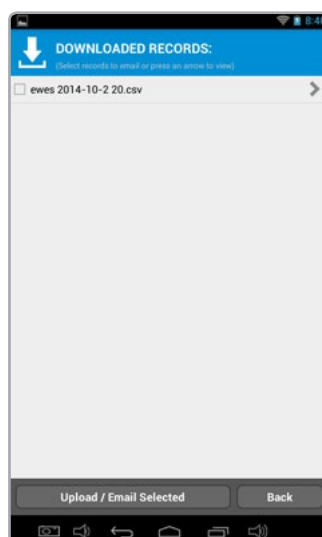
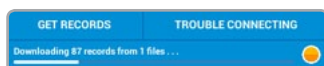
You are now prompted to provide a file name for the download, the default name is the current date and time.

Tap save when finished.



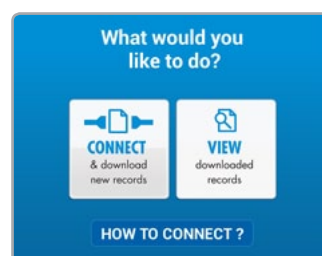
You are prompted to wait as the files are downloaded

A progress bar is displayed as the download is carried out.



All downloaded records on the device are listed. Each file has a checkbox to its left to select it.

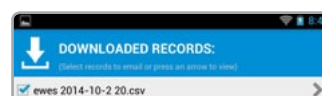
Tap the checkbox next to the file or files you wish to upload/email, or view.



Note: tapping the "view" button from the "What would like to do?" screen takes you directly to the downloaded records screen.

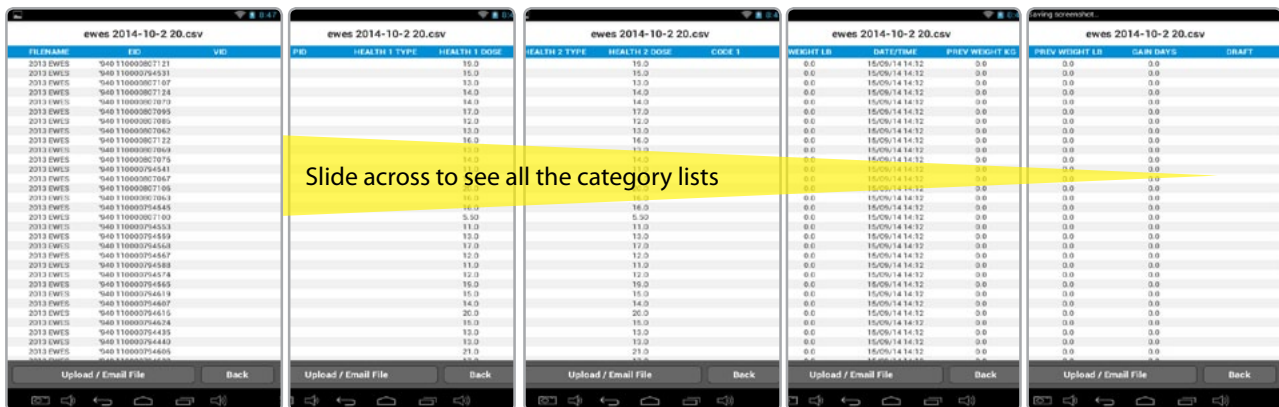


Whenever it is displayed you can tap the Upload/Email Selected, to forward the selected files.



The arrow to the right of each file name displays all the data in that file. see over for display view.

## The Te Pari Connect App

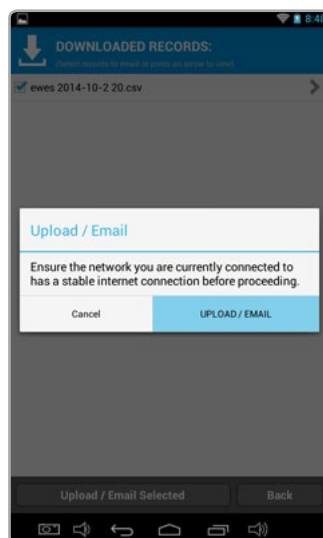


When you tap the view arrow at the right of the file the view window is displayed, all data categories are listed and you can slide the view across to see the category list you wish to look at.

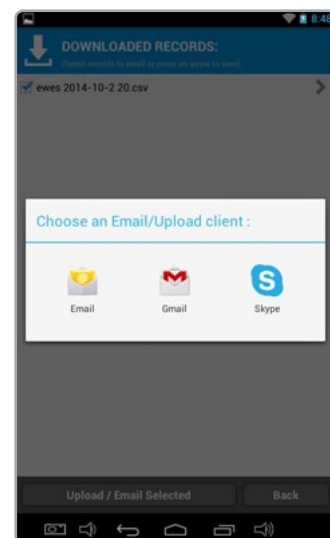
When you are finished viewing, tap the back button to return to the downloaded files list. You can also tap the Upload/Email file tab from the view window to send the file on.



To forward your files on, select the files checkboxes that you wish to forward then tap the Upload/Email Selected tab.



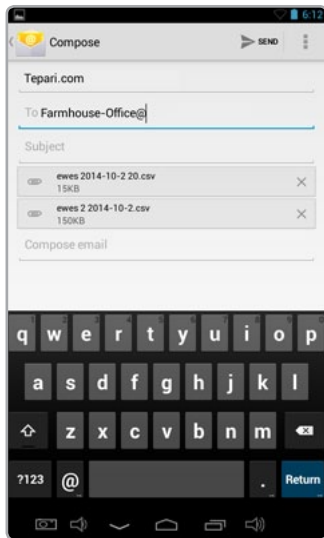
You will be prompted to ensure you have an active and stable internet connection. Tap the upload/email button to continue.



An application list to complete the action will be displayed. This will vary depending on the device you are using.

In this case we tap email.

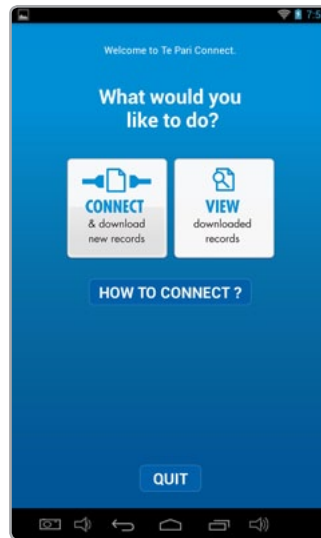
## The Te Pari Connect App



Your email app opens, type in where you wish to send the file or files to and tap send.

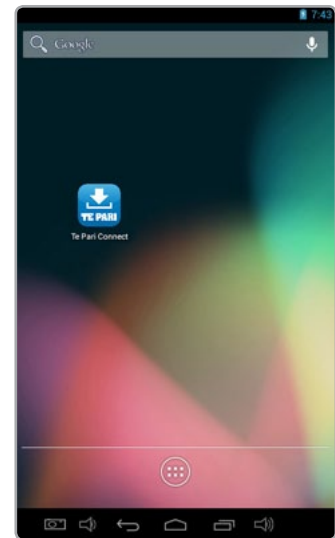
Windows phones send the email from Te Pari.

When done tap the back button.



You are returned to the "What would you like to do?" screen.

Continue with another action or tap quit to exit, then tap quit on the prompt.



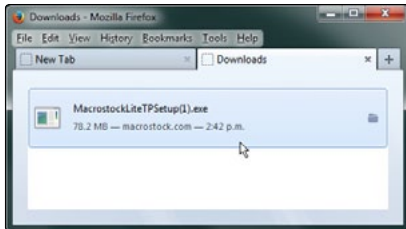
Depending on your device you may need to quit more than once.

You will be returned to your devices main page. ■

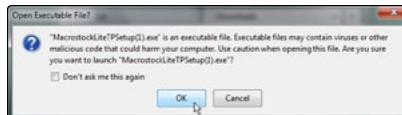
## Notes

## Te Pari Downloader software - Installation

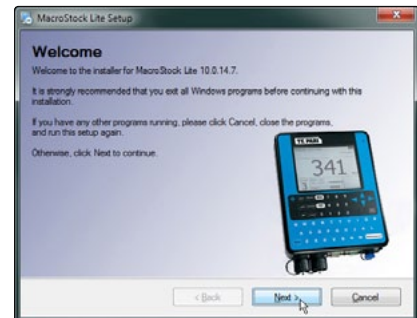
The Te Pari Scale Downloader software is based upon MacroStock Lite. Desktop Icons and the folder the application installs into are named Macrostock Lite.



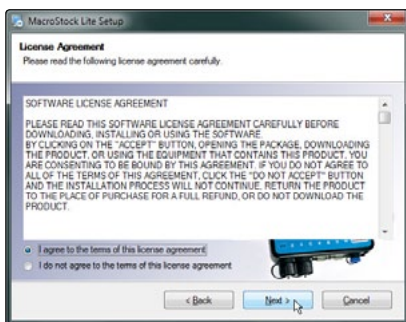
Download the install file, close other running applications. Then double click the file to run it.



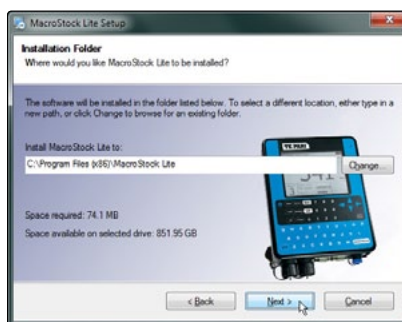
You may be given warnings about running the file. The file is clean so click OK to proceed.



The welcome screen will display, it will remind you ensure other applications are closed. Click Next to continue.



Select the radio button to agree to the terms and conditions of the License Agreement. Then click Next to continue.



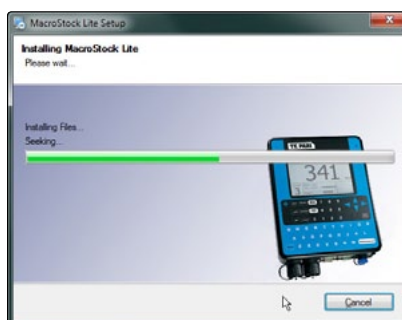
Click Next to install to the default directory. You can specify a different install folder by clicking the Change button first.



Select shortcuts directory. One will be added to your desktop for you. Select who should have access to the shortcuts, everyone or just you. Click Next to continue



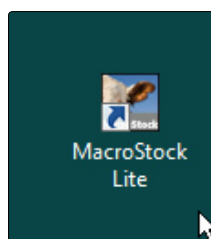
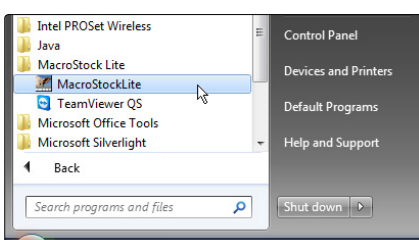
A summary of the installation details is shown. Click Next to continue and install.



A progress bar is displayed as the application is installed.



The Installation Successful screen is displayed. Click Finish to exit the installer and return to your desktop.



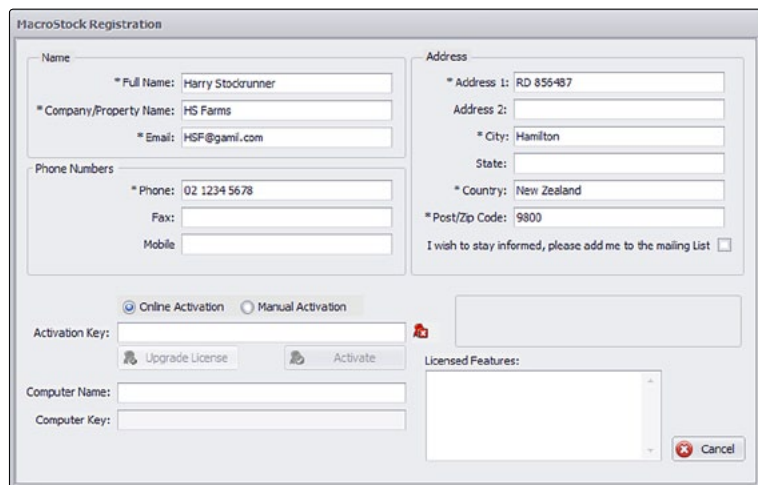
You will notice a Macrostock Lite icon on your desktop and also under Start, All Programs in a MacroStock Lite folder. You can run the application from either of these.

The first time you run the application you will be guided through the registration process.



## Te Pari Downloader software - Registration and activation

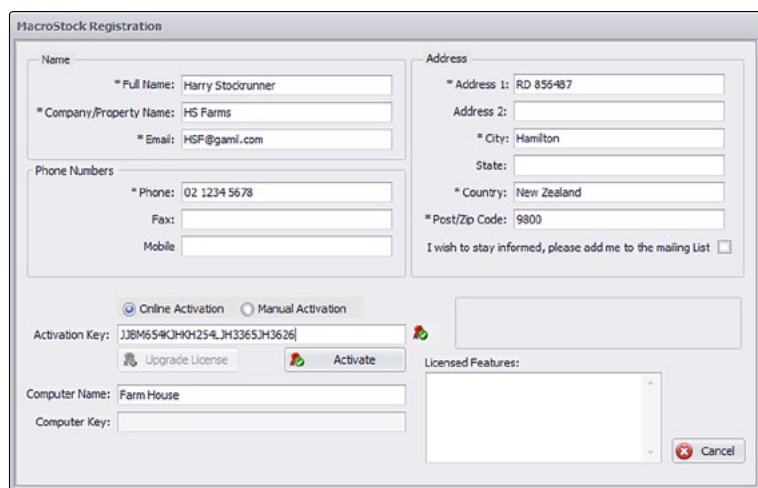
The first time you run the Te Pari Downloader the registration screen opens. Have an open internet connection so the process can be completed online immediately. The registration process is only carried out once.



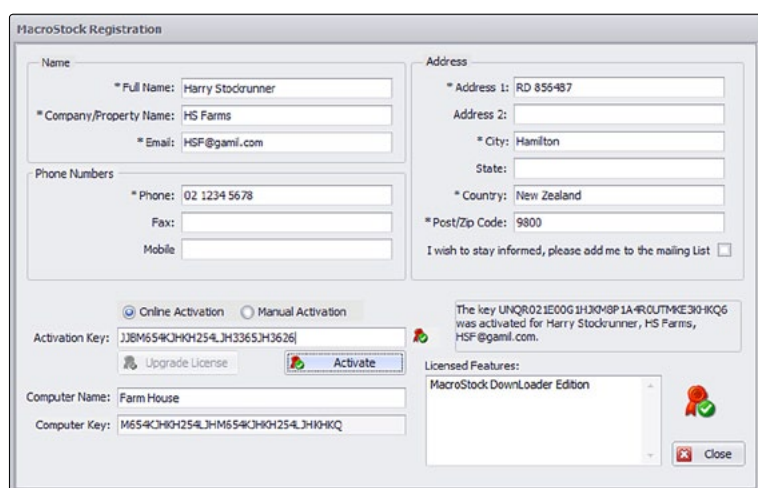
Complete the Name and Address fields. All fields that are marked with an asterisk \* must be completed.

Select whether or not you wish to go on the mailing list.

These same details also used, when required, when you forward data from the application.



Click the activate button.



The software will now be registered.

The Computer Key: and Licensed features: fields will populate and a red seal with a green tick over it will appear above the close button.

The license is now active and you may click the close button on the registration page.

The downloader now opens.

### Note:

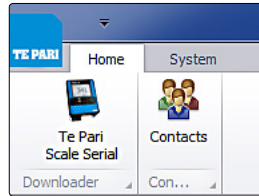
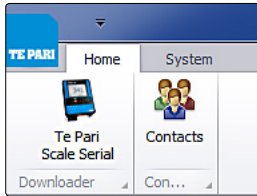
The software is registered for use on one machine only.

You will not be able to install the application on another machine without de-registering it first.

## Te Pari Downloader software - Connection of your scale to your computer

Note: The screen grabs shown here are often cropped to show only the relevant portion.

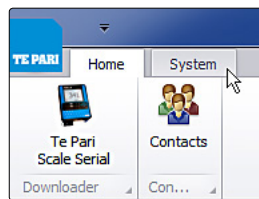
With your scale connected to your computer and your scale powered on, your computer will usually find and open the connection automatically, including installing any drivers required. If the connection does not auto connect a driver disk is supplied and it may need to be installed.



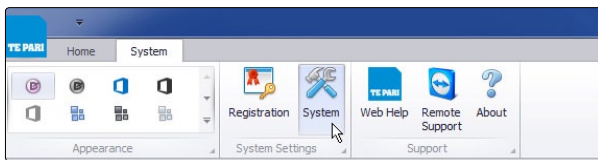
Open the Te Pari Downloader application.

The System main menu opens.

The menu bar may or may not show the scale image on the left of the menu bar

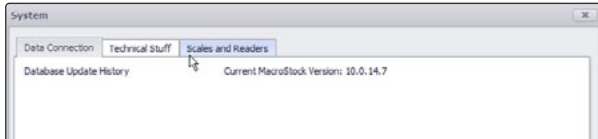


Click the System tab.



The System main menu opens.

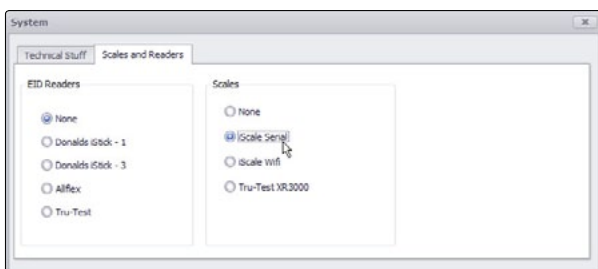
Click the System button



There are 3 sub tabs.

Click the Scales and Readers sub tab.

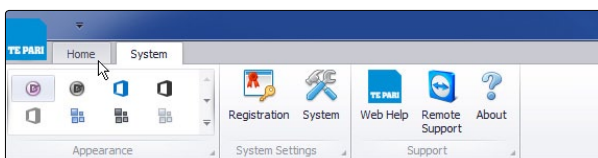
The other 2 tabs are for system diagnosis.



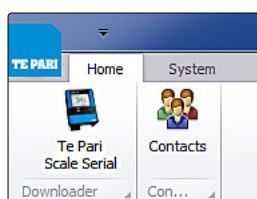
Under the Scales heading check the radio button alongside the scale connection method you are using.

Click the X in the top right of the panel to exit.

You are returned to the System main menu.



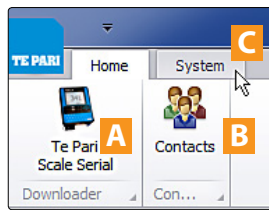
Click the Home tab to be returned to the home tab.



The Scale image with its connection type listed below it should now appear in the left of the menu bar. The connection is now complete and you are ready to work on your files.

Note the scale image will appear there now every time you open the application regardless of whether or not there is an active connection.

## Te Pari Downloader software - The menu bars



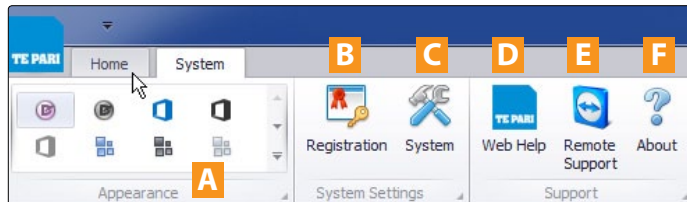
The Home menu bar

This appears each time the application is opened. It has 2 buttons and 1 tab alongside

**A** The Scale Downloader button. Clicking this opens the files on the Scale in the usual working window.

**B** The Contacts button. Clicking this opens the Contacts main area. This is where you add and edit your contacts list.

**C** The System tab. Clicking this opens the System menu bar



**A** The Appearance options menu. This area has a range of colour schemes that you can select from to change the way that the application looks.

**B** The Registration button. You can open this and change your details, Name, address, phone numbers, etc.

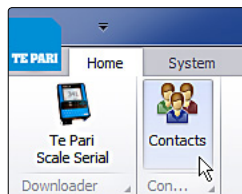
**C** The System button. The workings of this are covered on the previous page.

**D** The Web Help button. Opens the online help.

**E** Remote Support button. Activates remote assistance for online remote support sessions and problem solving. Usually support will request and or advise when its use is required.

**F** The About button displays version and ownership information.

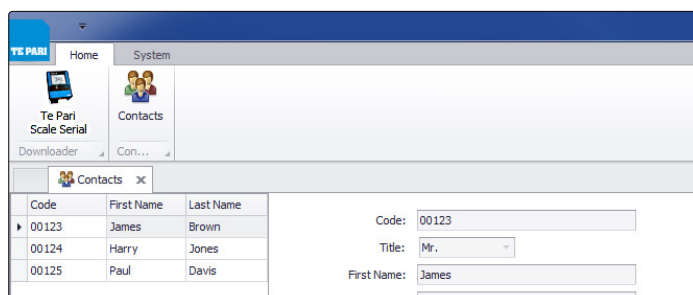
## Te Pari Downloader software - Adding and editing contacts



From the Home tab click the Contacts button.

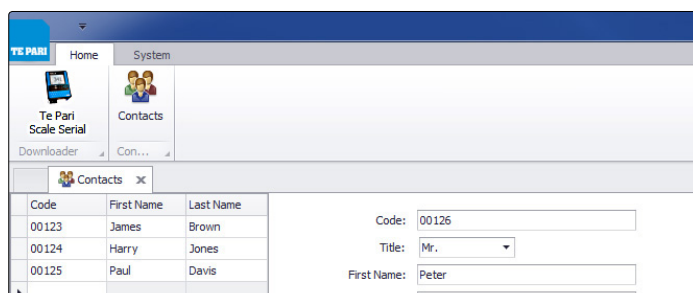
The contacts working windows are opened below the menu bar. A list of contacts opens at the left, and the individual contact information is displayed in the right hand window.

Selecting a contact on the list displays their information in the right window.



Click the Add button.

The fields above become blank and you can enter in all the details of your new contact.



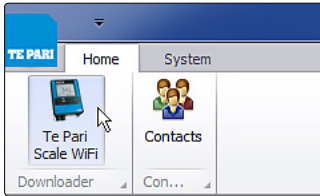
Click the Save Button.

The contact is added to the contacts list.

You can add further contacts by clicking Add again. Click on a contact from the list, then click Edit to change their details.

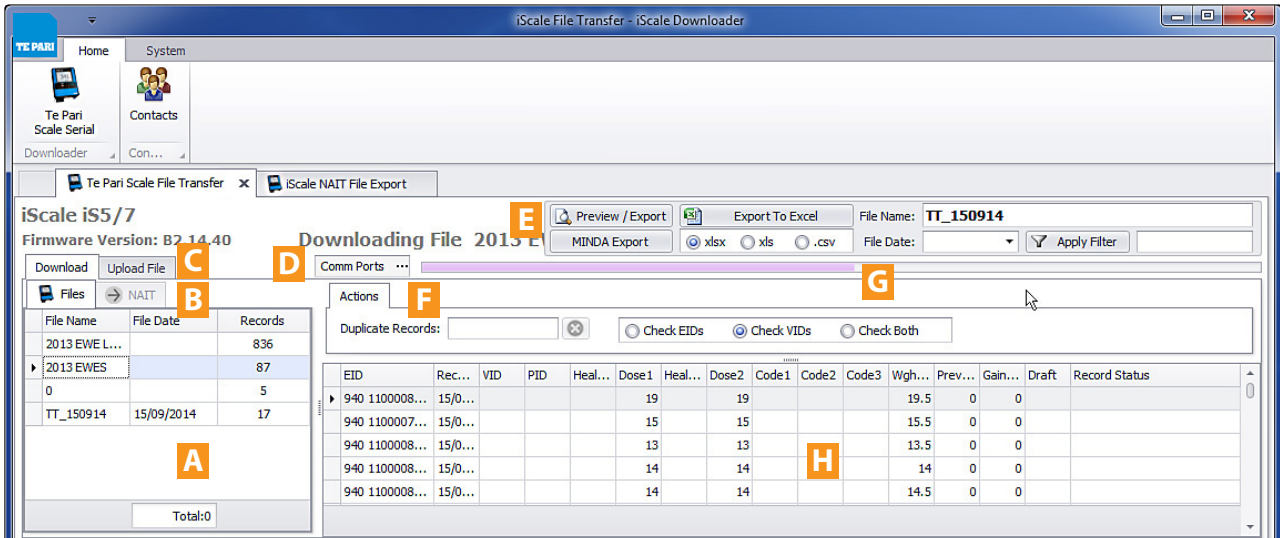
Cancel entry, Delete an entry, or click Close (or the X above the contacts list) to Close the contacts window and return to the Home tab.

## Te Pari Downloader software - Opening and viewing your files



With your Scale connected open the application and from the home tab click on the Scale button. The main working file transfer window opens beneath the menu bar as shown below.

Files on the scale are displayed in the file list. Double click on a file to download it. The progress bar is shown as the files records populate the file display area.

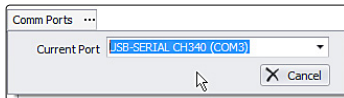


**A** The Download Files list. Files found on your scale are displayed here.

**B** NAIT file export. Creates a file to forward to NAIT.

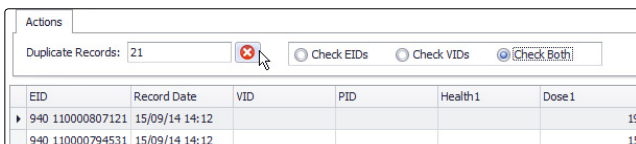
**C** Upload File. Allows you to browse for and upload files from your computer to your scale.

**D** Comm Ports button. This will search for and display a list of available ports to connect to. This is useful if you are having difficulty connecting to your scale.



**E** Export and Filter bar. Has options for exporting and viewing loaded files by filter parameters.

**F** Actions bar. Performs checks for duplicates in loaded files. Clicking the radio button alongside either Check EID's, Check VID's or Check Both - performs that check.



The number of duplicate records found is shown in the Duplicate Records box. Clicking the red X button will remove the duplicate records.

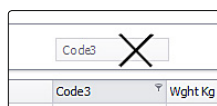
**G** While the file is Downloaded and loaded a progress bar is displayed.

**H** The file display area. When a file is active its records are listed here. You can sort records as follows:

Clicking on a column title sorts the displayed records by that title. Clicking the small arrow alongside the title toggles the sort between ascending and descending.

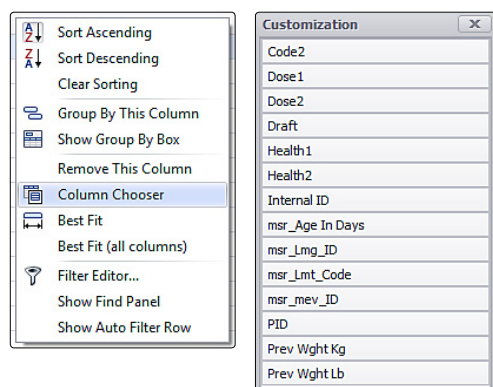
You can remove unwanted columns by clicking and holding on the title of the column and dragging the title up off the file display area. A cross is displayed on the title bar. Letting the button go with the cross displayed on it will remove that category column. Removing empty columns makes it easier to view file categories with data in them.

EID	Record Date	VID
940 110000807086	15/09/14 14:12	
940 110000807062	15/09/14 14:12	



All column functions can be accessed by right clicking on any column title - see over

## Te Pari Downloader software - Opening and viewing your files



The column sort actions are also available by right clicking on any column title. The functions list is displayed. These are self explanatory.

When you remove a column it will not be shown again on any file until it is reinstated. To do this right click on any column title to bring up the functions list and click on Column Chooser.

The categories not currently being displayed are listed. Double clicking on the column title/s you wish to reintroduce will restore it.

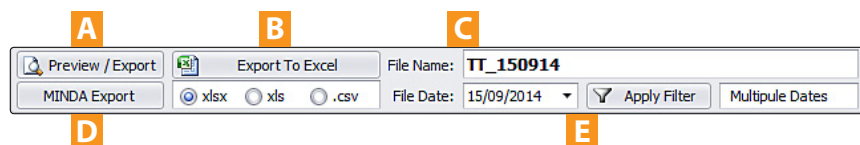
Note: removing the category title does not delete the information, it only stops displaying it. The data is still held in the record.

Other useful tools in the functions list include:

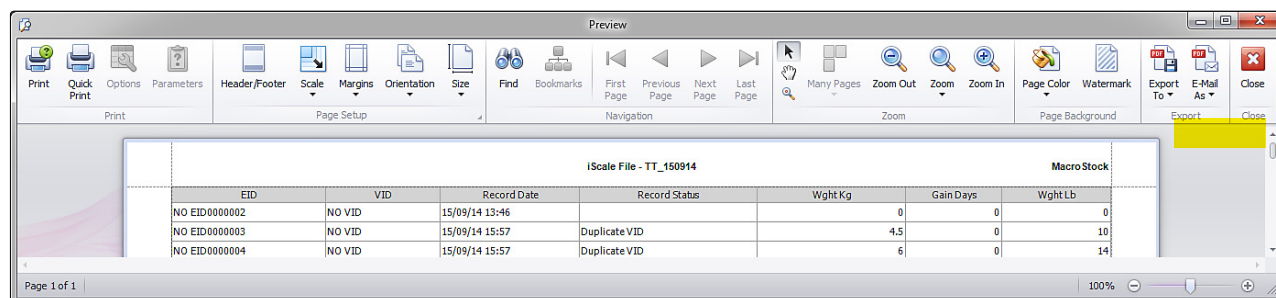
The find panel. Selecting this brings up a search panel at the top of the file window that you can use to search for specific entries.

The Filter Editor: Allows you to create a custom filter to refine your records. e.g. you have recorded XMD against animals that you notice have missed docking during a draft. You can create a filter to view records with XMD recorded in them and view a list of just these animals. When done you can clear the filter with the same tool.

## Te Pari Downloader software - Exporting, printing and filtering



**A** The Preview/Export button. When you click this the current file is opened in a print preview window. All the usual print formatting options are available here for you as shown below.



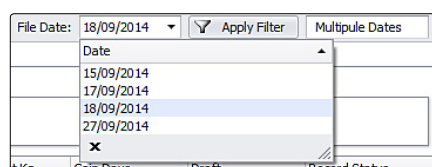
There are also 2 export buttons, highlighted above. These allow you to select from a drop down list of file format options and either save the file locally or to email it on. The Email option saves the file first then opens your email application with the file already attached ready for you to select the recipient.

**B** Export to Excel button. Select your preferred format, from the options below the button, then click the Export To Excel button. A standard Windows Save As dialogue box is opened. Provide a file and location and click Save.

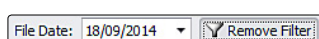
**C** Displays the currently active files name.

**D** Exports the file using a standard Windows Save As dialogue box for MINDA livestock systems (\*.xlsx format)

**E** Apply (Date) Filter button. The dates the records were taken are listed in the File Date: drop down menu box (shown below) you can select to view files from a single date by clicking the Apply Filter button.

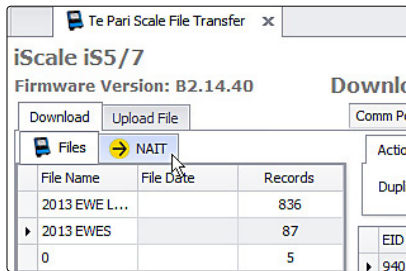


When a date filter is applied the button changes to Remove Filter and clicking the button clears the filter and displays all date ranges.

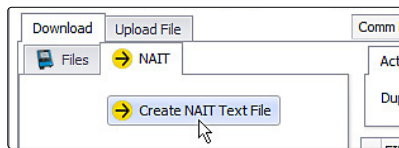




## Te Pari Downloader software - NAIT file creator

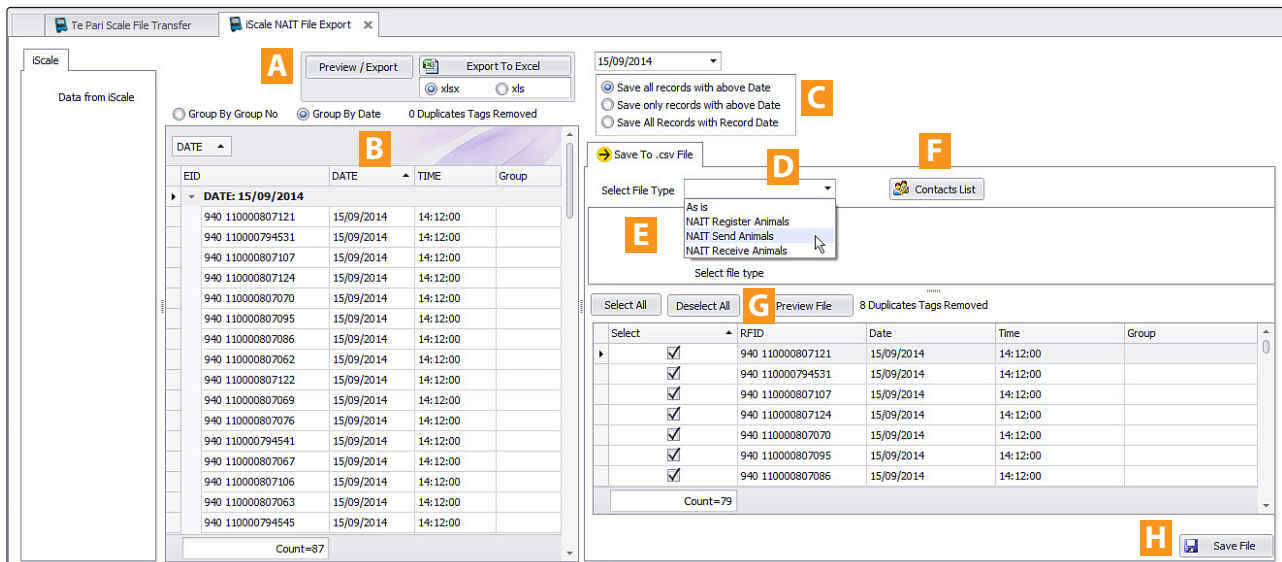


The NAIT file creator works with the file you have opened from your scale. With the file open, click the NAIT tab.

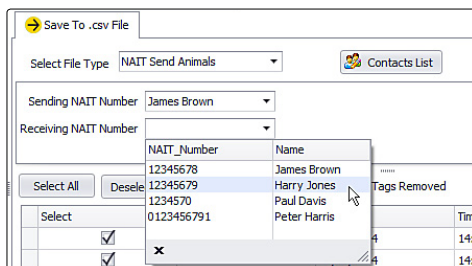


Click the Create NAIT Text File button.

The Scale NAIT File Export window opens up as shown below.



- A** Preview/Export bar. The items here work in the same way as explained on the previous page.
- B** Shows the record data in the current working file.
- C** Date options. Allows you to select records in date ranges. The drop down list shows all the record dates in the file.
- D** Save to .csv File tab, Select File Type. Options include: As is, NAIT Register Animals, NAIT Send Animals and NAIT Receive Animals. The information you need to supply appears in the area **E** below and changes depending on the file type that you have selected, see the example below.
- F** Contacts List. Allows you to add and modify your contacts directly from this area.
- G** Displays a list of the records being sent, this populates when you click the Preview File button. The check boxes allow you to select and deselect files, the total record count below the column changes accordingly. Only the selected files will be saved to the NAIT file.
- H** Save File button. Saves the file using a standard Windows Save As dialogue box to the location of your choosing. With the NAIT file saved locally you can upload it to the NAIT web site.



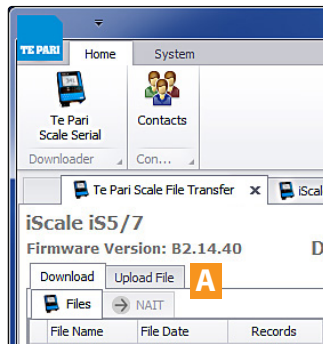
Here we have selected NAIT Send Animals as the file type.

The required fields appear, in this case, Sending NAIT Number and Receiving NAIT Number.

The drop down menus for these fields list your contacts, so you select details quickly. If the contact is not present you can click the Contact List button and add them directly.

## Te Pari Downloader software - Uploading files to your Te Pari Scale Indicator

The downloader software allows you to copy files back to your scale. This lets you sort your data on your computer, then upload the file to the scale and then sort by, or view that data. There are two main file types, one consisting of dynamic recorded data that changes, like weight records. And data that does not change, called life data, examples of life data include date of birth, owner at purchase etc.



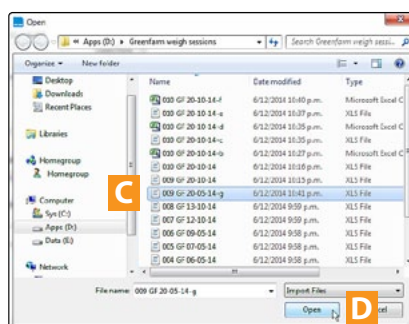
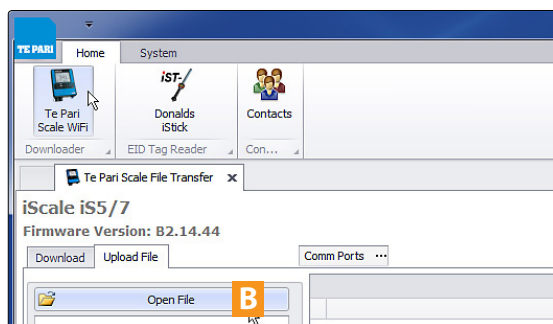
Dynamic and life data types are stored in different locations on the scale, so you need to create a file for either, depending on your purpose.

The general procedure is to open a local file, map (name) the fields you wish to upload, provide a file name for the file on the scale and then upload it.

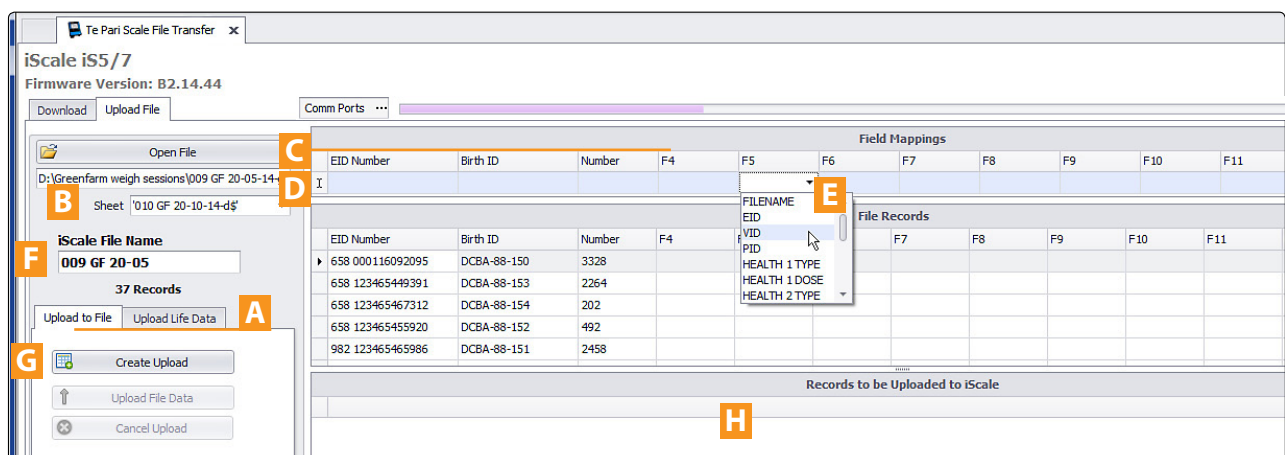
With your scale connected open the downloader application and from the home tab click on the Scale button.

The main working file transfer window opens beneath the menu bar.

Click on the Upload File button **A** to open the Upload File Screen, shown below.



Click the Open File button **B**, browse to the file you wish to upload, select it **C**, then click the Open button **D**. A progress bar will display as the file is opened. When open the data will be displayed as shown below.



**A** Tabs for either Upload to File (the default option that creates a normal dynamic data file) or Upload Life Data. These operate differently

### To Upload to File

**B** The location and the name of the file and sheet you have opened is displayed here.

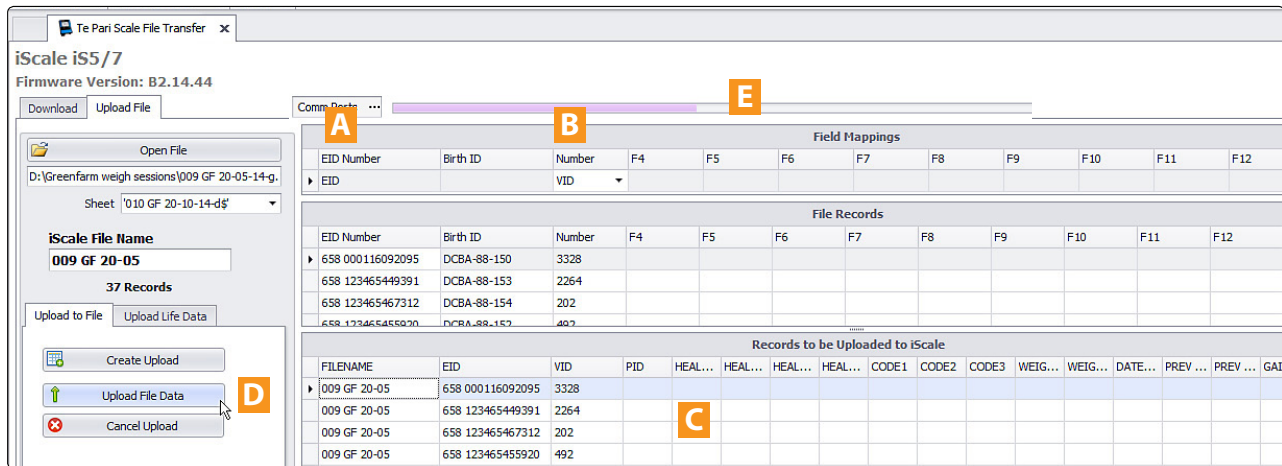
**C** The top row of the Field Mappings area displays the column titles as they are in the file you have opened.

**D** The lower row of Field Mappings area has drop down menus **E** for each title so you can map the data in the column to its correct name or value. Only the column titles that are mapped will be uploaded. This allows you to select only the data that you require.

**F** Enter the name for the file as it will appear on your scale once uploaded. The default is the current file name.

**G** Click the Create Upload button, this creates the upload file and displays it in the lower window **C**, shown over.

## Te Pari Downloader software - Uploading files to your Te Pari Scale Indicator



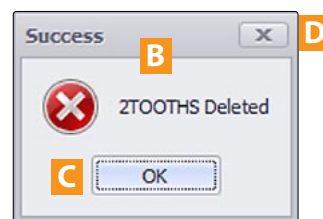
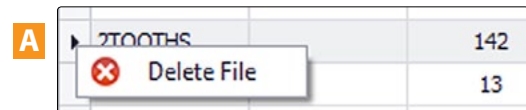
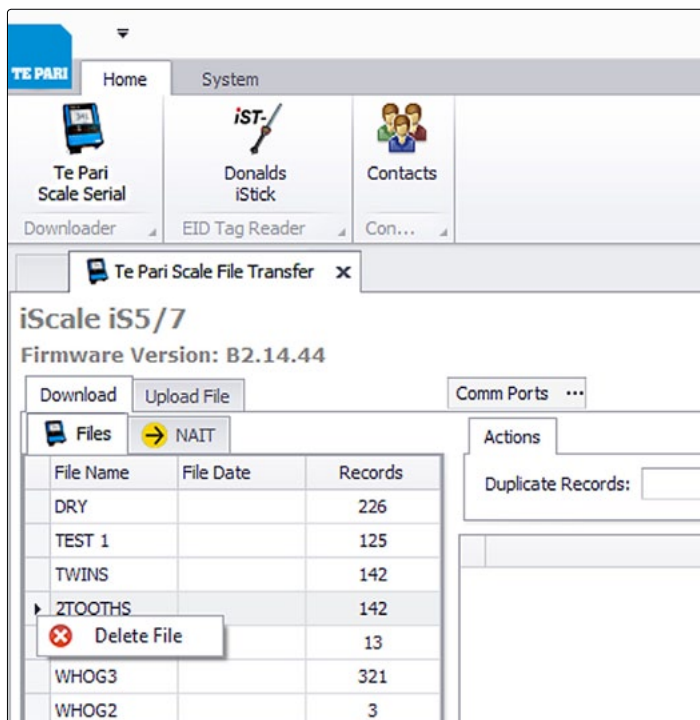
The created upload file and its mapping in window **C**. Note that column **A** EID Number is mapped to EID, and that column **B** Number is mapped to VID. See that the Birth ID column is not included, because the Birth ID is life data it needs to be uploaded using the Upload Life Data tab.

When you click the Upload File Data button **D** a progress bar will be displayed in area **E** as the file is copied to your scale. Once copied it will be available for selection from the File List screen on your scale.

## Te Pari Downloader software - Deleting a file on your Te Pari Scale Indicator

The downloader software allows you to delete files from your scales File List.

With your scale connected to your computer run the downloader software and click the scale icon to display the list of files currently on your scale.



Right click on the arrow to left of the file name you wish to delete **A**. A prompt will display **B**. click the OK button to proceed **C**.

To cancel without deleting, click the X in the top right of the prompt **D**.

Note: Scale firmware version B2.14.47 and Te Pari Downloader software version 10.0.14.14 or later is required to use the delete feature.

## Notes

## Quick settings - T20 Scale Indicator and Te Pari Racewell DR3 Auto Drafter

System	
Weighing Speed	SHEEP
Duplicate EIDS	YES
Weighing Precision	NORMAL
Weighing Units	KG
Reweight Threshold	50%
Language	ENGLISH
Date Format	DD/MM/YYYY
Date and Time	21 / 01 / 2017 20:10:52

Advanced System
Save and Exit



SYSTEM

Set the **Weighing speed** to **SHEEP**.

Set the preferred language, date format and the current date and time.

Connections	
Com Plug 1	AUTO DRAFTING
Com Plug 2	PHONE/COMPUTER
Bluetooth	PHONE/COMPUTER
Loadbar Model	T1000
Description	Te Pari DR3 Drafter

✓ Save and Exit



CONNECTIONS

Set **Com Plug 1** to **AUTO DRAFTING**.

Set **Loadbar Model** to **T1000**.

Arrow to **Save and Exit** and press **RECORD/SELECT** to return to the **MAIN MENU**.

Draft Ranges		Draft by - Weight	
Gate 1	0000.0	-	0050.0 OFF
Gate 2	0050.1	-	0070.0 OFF
Gate 3	0070.1	-	0090.0 OFF
Gate 4	0090.1	-	0300.0 OFF
Gate 5	0000.0	-	0000.0 OFF
Gate 6	0000.0	-	0000.0 OFF
Gate 7	0000.0	-	0000.0 OFF
Gate 8	0000.0	-	0000.0 OFF
Gate 9	0000.0	-	0000.0 OFF
Gate 0	EID not read		
AUTO EID: 10s			

Save and Exit



DRAFT

Arrow to and key in the weight ranges you wish for your draft gates. Ensure the highest weight set is more than the heaviest animal likely to be weighed.

Recording	
Tag Recording	ON
Weight Gain	Total Gain
Auto Visual Tags	ON
Starting at number	0001
Code Recording	OFF

✓ Save and Exit



RECORDING

If you want weights only without recording tags  
Set **Tag Recording** to **OFF**

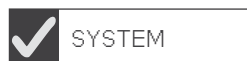
If you are using EID or visual tags and you want every tag read. Set **Tag Recording** to **ON**.



## Quick settings - T20 Scale Indicator and Te Pari Racewell HD3 and HD6 Sheep Handlers

System

Weighing Speed -	SHEEP
Duplicate EIDS -	YES
Weighing Precision -	NORMAL
Weighing Units -	KG
Reweigh Threshold -	50%
Language -	ENGLISH
Date Format -	DD/MM/YYYY
Date and Time -	21 / 01 / 2017 20:10:52



Set the **Weighing speed** to **SHEEP**.

Set the preferred language, date format and the current date and time.

Connections

Com Plug 1	AUTO DRAFTING
Com Plug 2	PHONE/COMPUTER
Bluetooth	PHONE/COMPUTER
Loadbar Model	T600
Description	Te Pari 600mm

☒ Save and Exit



Set **Com Plug 1** to **AUTO DRAFTING**.

Set **Loadbar Model** to **T1000**.

Arrow to **Save and Exit** and press **RECORD/SELECT** to return to the **MAIN MENU**.

Draft Ranges      Draft by - **Weight**

Gate 1	0000.0	-	0050.0	OFF
Gate 2	0050.1	-	0070.0	OFF
Gate 3	0070.1	-	0090.0	OFF
Gate 4	0090.1	-	0300.0	OFF
Gate 5	0000.0	-	0000.0	OFF
Gate 6	0000.0	-	0000.0	OFF
Gate 7	0000.0	-	0000.0	OFF
Gate 8	0000.0	-	0000.0	OFF
Gate 9	0000.0	-	0000.0	OFF
Gate 0	EID not read			
AUTO EID: 10s				



Arrow to and key in the weight ranges you wish for your draft gates. Ensure the highest weight set is more than the heaviest animal likely to be weighed.

Recording

Tag Recording	ON
Weight Gain	Total Gain
Auto Visual Tags	ON
Starting at number	0001
Code Recording	OFF

☒ Save and Exit



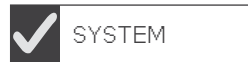
If you want weights only without recording tags Set **Tag Recording** to **OFF**

If you are using EID or visual tags and you want every tag read. Set **Tag Recording** to **ON**.

## Quick settings - T20 Scale Indicator and Classic CDR3 Cattle Auto Drafter

System	
Weighing Speed	CATTLE
Duplicate EIDS	YES
Weighing Precision	NORMAL
Weighing Units	KG
Reweigh Threshold	50%
Language	ENGLISH
Date Format	DD/MM/YYYY
Date and Time	21 / 01 / 2017 20:10:52

Advanced System
Save and Exit



Set the **Weighing speed** to **CATTLE**.

Set the preferred language, date format and the current date and time.

Connections	
Com Plug 1	AUTO DRAFTING
Com Plug 2	PHONE/COMPUTER
Bluetooth	PHONE/COMPUTER
Loadbar Model	T5000
Description	Te Pari Cattle Drafter

✓ Save and Exit



Set **Com Plug 1** to **AUTO DRAFTING**.

Set **Loadbar Model** to **T5000**.

Arrow to **Save and Exit** and press **RECORD/SELECT** to return to the **MAIN MENU**.

Draft Ranges		Draft by - Weight	
Gate 1	0100.0 - 0150.0	OFF	
Gate 2	0150.1 - 0250.0	OFF	
Gate 3	0250.1 - 0300.0	OFF	
Gate 4	0300.1 - 0600.0	OFF	
Gate 5	0000.0 - 0000.0	OFF	
Gate 6	0000.0 - 0000.0	OFF	
Gate 7	0000.0 - 0000.0	OFF	
Gate 8	0000.0 - 0000.0	OFF	
Gate 9	0000.0 - 0000.0	OFF	
Gate 0	EID not read		
AUTO EID: 10s			

Save and Exit



Arrow to and key in the weight ranges you wish for your draft gates. Ensure the highest weight set is more than the heaviest animal likely to be weighed.

Recording	
Tag Recording	ON
Weight Gain	Total Gain
Auto Visual Tags	ON
Starting at number	0001
Code Recording	OFF

✓ Save and Exit

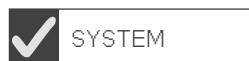


If you want weights only without recording tags  
Set **Tag Recording** to **OFF**

If you are using EID or visual tags and you want every tag read. Set **Tag Recording** to **ON**.

## Quick settings - T10 Scale Indicator taking weights only on a Te Pari Cattle Crush

System	
Weighing Speed -	CATTLE
Duplicate EIDS -	YES
Weighing Precision -	NORMAL
Weighing Units -	KG
Reweigh Threshold -	50%
Language -	ENGLISH
Date Format -	DD/MM/YYYY
Date and Time -	21 / 01 / 2017 20:10:52
<div>Advanced System</div> <div>Save and Exit</div>	



Set the **Weighing speed** to **CATTLE**.

Set the preferred language, date format and the current date and time.

Connections	
Com Plug 1	PHONE/COMPUTER
Com Plug 2	PHONE/COMPUTER
Bluetooth	PHONE/COMPUTER
Loadbar Model	T4000
Description	Te Pari HD Bars/Cells
<div>Save and Exit</div>	



Set **Com Plug 1** to **PHONE/COMPUTER**.

Set **Loadbar Model** to **T4000**.

Arrow to **Save and Exit** and press **RECORD/SELECT** to return to the **MAIN MENU**.

Recording	
Tag Recording	ON
Weight Gain	Total Gain
Auto Visual Tags	ON
Starting at number	0001
Code Recording	OFF
<div>Save and Exit</div>	



If you want weights only without recording tags  
Set **Tag Recording** to **OFF**

If you are using EID or visual tags and you want every tag read. Set **Tag Recording** to **ON**.

## Te Pari Standard and Heavy Duty load bars

### Load bar features

Te Pari Standard 600 mm and Heavy Duty 1000 mm load bars are interchangeable between all models of

Te Pari scale indicators. No special calibration is required when they are connected to Te Pari indicators as the load bar settings are preprogrammed into each indicator. The correct load bar settings are loaded for you when you select your load bar model from the listed options in the scales system setup screen.

Te Pari livestock weighing systems are not certified for trade use.



### Standard 600 mm load bars

Standard 600mm load bars are designed to be fitted under a cattle platform, Racewell Handling unit or a sheep crate.

Heavy duty cables that are sealed into the bars to eliminate moisture points are standard.

- Weigh up to 2,000 kg.
- Tough and fully weatherproof.



### Heavy Duty 1000 mm load bars

Heavy Duty 1000 mm load bars can be fitted to any model of cattle crush or chute.

Heavy Duty 1,000 mm Load bars are designed for use with even the largest and most energetic livestock and have a stainless steel "ball and socket" system designed for cattle crush use.

- Super tough
- Weigh up to 4,000 kg

### Installing load bars

The platform or crush will have mounting holes which should line up with the holes in the top of the load bars so the two pieces can be bolted together. It is best not to have these bolts too tight.

An evenly levelled concrete pad of a size greater than the platform or crush is the best option for mounting the load bars on. Taking care when preparing this concrete pad will be of great benefit to obtaining good weighing results.

Ideally the concrete pad should extend at least 500 mm before the weigh platform, this extension will gather muck and reduce the amount of mud and dirt carried through to the platform.

Your Te Pari load bars are splash and weather proof however they should not be left submerged in water. Prolonged submersion can lead to serious water damage do not recess the loadbars into troughs in the foundation area as this will allow water to pool around the load bars and damage them.

### Installing Load bars - continued

The load bars can be bolted to the concrete pad or pinned in order to prevent movement.

For safety reasons, the load bars should be positioned as close to the ends of the platform or crush as practical. Any overhang should not exceed 150mm.

The load bar cables should be positioned so that potential damage is minimised. Keep cables away from animals so they cannot be chewed, walked on, or squashed in any way as any cable damage will affect the weight reading and require the complete loadbar to be returned to Te Pari for repair

The total weight of the platform or crush must rest upon the load bars in order to ensure accurate and consistent weight readings. Ensure that the load bars and platform are clear of any obstruction and that the installation is as level as possible. Good drainage is essential so that the load bars are not left sitting in puddles of muddy water.

Care when cleaning and hosing down to ensure no build-up of manure or mud around the load bars will extend the life of the load bars and prevent inaccuracies with weight readings.

**CAUTION:** Do not weld any metalwork that is in contact with the load bars. The load bars should be completely removed before any welding takes place as spurious currents will cause permanent damage to the load cells.

---

### Testing the installation

- Connect the load bars to your Te Pari indicator.
- Turn on the indicator and press zero.
- Place a test weight at one end of the platform and note the reading on the indicator. The displayed weight should be stable.
- Remove the weight, check that the display returns to zero, then place the weight at the other end of the platform and take note of the reading.

The weight reading should not vary by more than 1 kg from one end to the other and should return to zero when the weight is removed. If this is not the case then check that the load bars or platform are not binding on anything such as a fence post etc, the installation is level and secure, and that there has been no cable damage during the installation. If necessary, loosening the anchor bolts may relieve tension and allow better results.

---

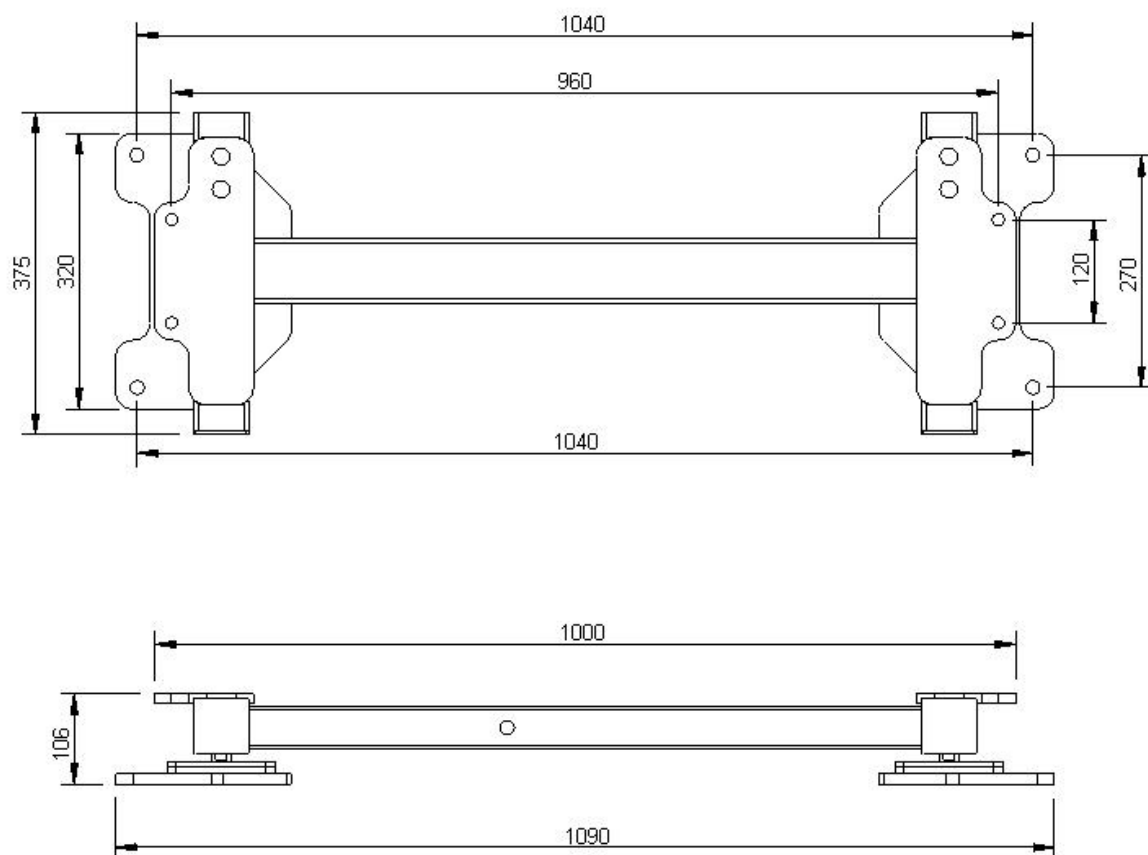
### Care and Maintenance

Te Pari load bars are designed to withstand the harsh conditions associated with sheep and cattle crates and platforms. Taking care with installation and maintenance will prolong their life and ensure accurate recording

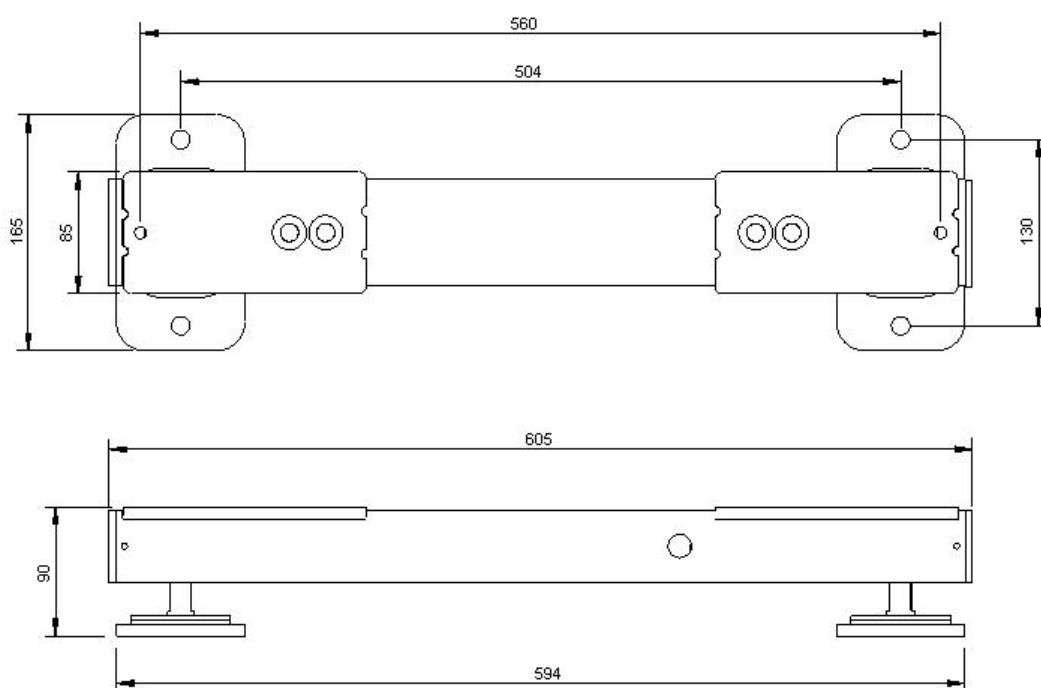
- When weighing ensure the animal is fully on the platform.
- Keep the underside of the platform and around the load bars free of stones or muck build-up.
- Store your indicator in a clean and dry environment and keep the indicator, load bars and cable plugs away from water as much as possible.
- The load bar cable plugs have caps which should always be screwed back on when not in use. If possible position the plugs so that they are not exposed to the weather when not being used.
- When cleaning the loadbars do not direct a water blaster directly at the loadcell area.



**1000 mm Heavy Duty load bar schematic**



**600 mm Standard load bar schematic**



## EiD status lights - T20E model only



Red	Green	Yellow	Indicated status
SERVICE	OK	POWER	
OFF	OFF	ON	Reader is OK
OFF	FLASHING	ON	Tag was read
OFF	OFF	FLASHING	Reader is OK and Sync. Slave
ON	OFF	FLASHING	Low input voltage, <11V DC
ON	FLASHING	ON	Antenna fault

In general, the yellow LED indicates that the reader is switched on and is running, the green LED indicates a successful tag read and the red LED indicates a fault condition.

The LEDs also advise of other operating states as shown in the table below.

The most common cause of a lit red service LED is a flat battery (low input voltage). If the power supply is OK and the red service LED remains lit, contact service.

## Tips

### Weighing

To improve weighing accuracy ensure:

- The animal isn't handled during weighing.
- The operator isn't touching the chute.
- The chute isn't touching another animal or race part.
- The loadbars and underside of platform are free from dirt and muck buildup.
- The scale will auto zero when the animal leaves the platform. Ensure that the chute is free at this time.
- Always zero the Scale after clearing or moving the weigh platform.

### Operation

- Make regular back ups of the files on your Te Pari Scale Indicator to your computer.
- Make a record of the loadbar settings after auto calibration and any other specific settings.
- In data only mode (no loadbars connected) previous weight and weight gain are displayed as "0".
- To edit the last record, press recall, change the data then press the **RECORD/SELECT** button to save it.
- If you are using a device that requires coms power, turn the power to it off when it is not in use.
- The ID mode **NO ID QUICK WEIGH** is useful for quickly drafting or collecting statistics on a group of animals without recording any additional information.

## FCC Notice

This device complies with part 15 of the FCC rules for class A digital devices. It can generate, use and radiate radio frequency energy, and if not used in accordance with the instructions may cause harmful interference to radio communications. In a residential area it may cause harmful interference, which will be required to be corrected by the user at their own expense.

## Care, maintenance and storage

Your Te Pari scale can run from either the internal rechargeable batteries or the 12v power adaptor. Use only the supplied power adaptor to both power and charge the scale.

The power adaptor is rated for indoor use only. Charge at temperatures between 0 to 30 C (32 to 86 F).

Run time is 6 hours at 24° C with the back light on. Full recharge time is 8 hours.

Operating temperature is between -10 and 40° C (14 to 104° F).

If operating the unit below 0C ensure the battery is fully charged.

Your scale is environmentally sealed and water proof to the IP66 standard.

Do not submerge in water. Do not tamper with or remove the case screws, this will void the warranty.

Store your scale in a clean, dry place, out of direct sunlight. Storage temperature is between -10 and 35° C (14 to 95°F). Store above 0° C for optimum battery performance.

The lens has a scratch resistant coating however take care when cleaning. Clean the LCD lens and keypad lightly with a soft clean cloth and a cleaner suitable for use on polycarbonate plastic.

## Warranty

Your T20 series scale is warranted to be free from defects in materials or workmanship under normal use during the limited warranty period.

The warranty period starts on the date of purchase from your authorized Te Pari scale agent. Please keep the dated sales receipt for proof of purchase as you may be required to provide proof of purchase as a condition of receiving warranty service.

Te Pari scales carry a 1 year limited warranty. The rechargeable batteries carry a 1 year limited warranty. The battery warranty does not cover changes in battery charge capacity and is limited to defects in materials or workmanship resulting in battery failure.

During the limited warranty period, your scale will be repaired or replaced, either the defective component or product. All components removed under this warranty become the property of Te Pari. The replacement component will take on either the remaining warranty period of the removed component or a ninety (90) day limited warranty for the spare part, whichever is longer. The replacement component maybe manufactured from new or used materials equivalent to new in performance and reliability. Te Pari reserves the right to improve or modify products from time to time without assuming

obligation to modify products previously manufactured.

Te Pari is not responsible for damage that occurs as a result of (1) failure to follow the instructions that came with the product; (2) accident, misuse, abuse or other external causes; (3) voltage surge or lightning strike; (4) modification, tampering or service by an unauthorized service provider.

Te Pari is not liable for any damages or personal injury caused by the product or the failure of the product to perform, including any damage or loss of data on the product or computer.

The maximum liability of Te Pari under this limited warranty is limited to the lesser of the cost of repair or the replacement of the product.

In the event of the product requiring servicing under the terms of the warranty contact your authorized dealer. The product is to be returned to the service center at the expense of the purchaser.

These conditions constitute the complete and exclusive warranty and supersede all other warranties, representations or conditions relating to this product.

Te Pari Scale Indicators  
All rights reserved

## Notes

# TE PARI

[www.tepari.com](http://www.tepari.com)

Your Te Pari Scale Indicator  
is fully compatible with all Te Pari

## Revolution Dosing and Injection Guns



Follow  
us on



For more information on our  
full range of Weigh Systems and  
Animal Management Solutions  
- Call or visit us online.

**For Te Pari scale service and support contact your local distributor or:**

**Online:** [www.tepari.com](http://www.tepari.com) - [support@tepari.com](mailto:support@tepari.com) - <http://support.tepari.com>

**Phone:** New Zealand 0800 837 274 - Australia 1800 650 682 - USA 800 315 0433  
International +64 (03) 433 0077

**Head Office:** 9 Endeavour Crescent. P.O. Box 25, Oamaru, 9444, New Zealand.