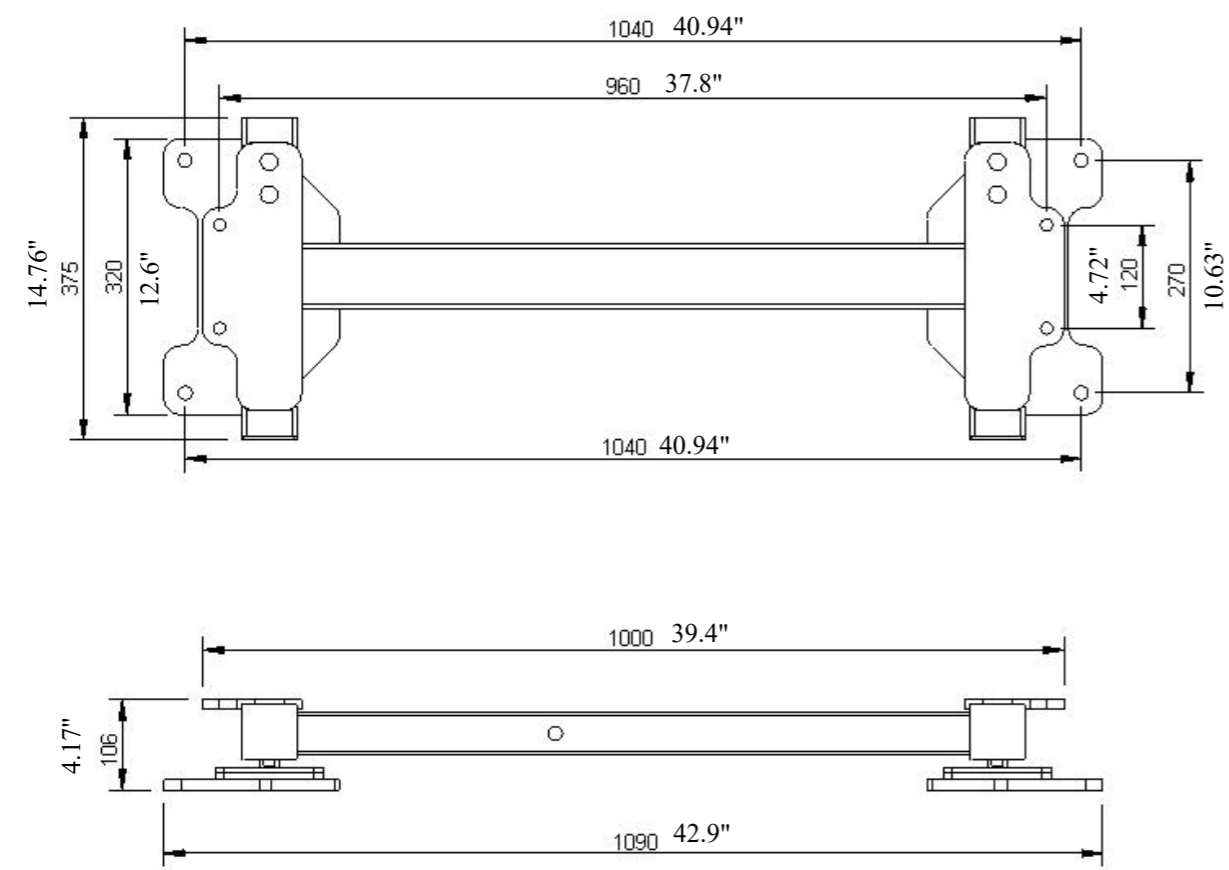
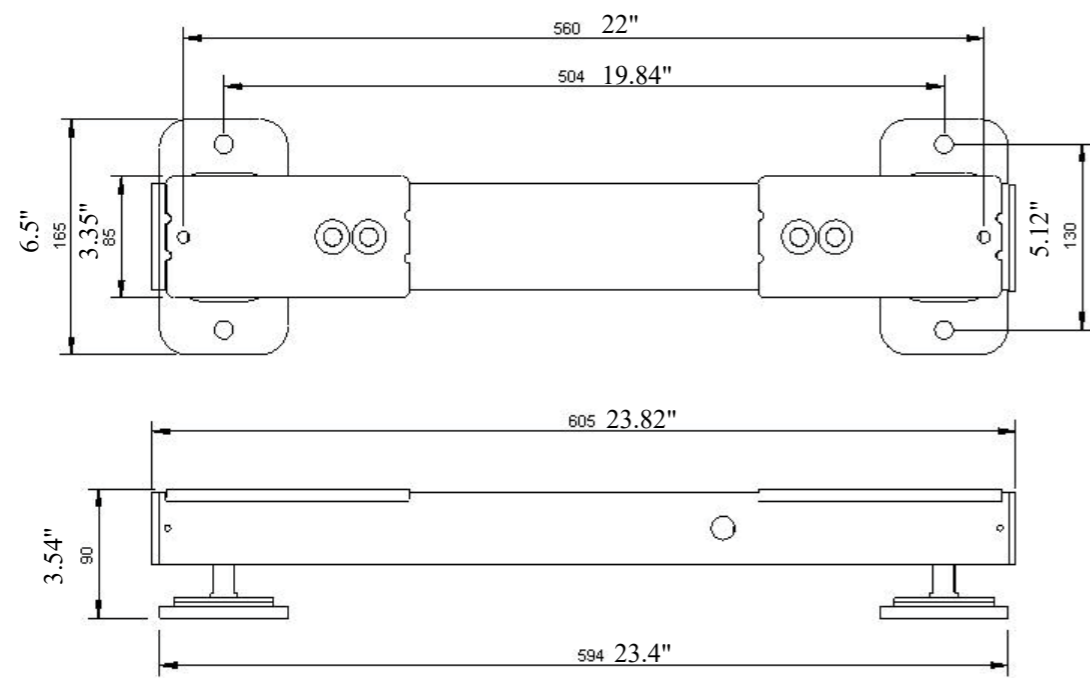


1000 mm Heavy Duty load bar schematic



600 mm Standard load bar schematic



TE PARI Standard and Heavy Duty load bars



Load bar features

Te Pari Standard 600 mm and Heavy Duty 1000 mm load bars are interchangeable between all models of Te Pari scale indicators. No special calibration is required when they are connected to Te Pari indicators as the load bar settings are preprogrammed into each indicator. The correct load bar settings are loaded for you when you select your load bar model from the listed options in the scales system setup screen.

Te Pari livestock weighing systems are not certified for trade use.



Standard 600 mm load bars

Standard 600mm load bars are designed to be fitted under a cattle platform, Racewell Handling unit or a sheep crate.

Heavy duty cables that are sealed into the bars to eliminate moisture points are standard.

- Weigh up to 2,000 kg
- Tough and fully weatherproof.



Heavy Duty 1000 mm load bars

Heavy Duty 1000 mm load bars can be fitted to any model of cattle crush or chute.

Heavy Duty 1,000 mm Load bars are designed for use with even the largest and most energetic livestock and have a stainless steel “ball and socket” system designed for cattle crush use.

- Super tough
- Weigh up to 4,000 kg

Installing load bars

The platform or crush will have mounting holes which should line up with the holes in the top of the load bars so the two pieces can be bolted together. It is best not to have these bolts too tight.

An evenly levelled concrete pad of a size greater than the platform or crush is the best option for mounting the load bars on. Taking care when preparing this concrete pad will be of great benefit to obtaining good weighing results.

A good idea is to build the concrete pad so that it extends at least 500 mm before the weigh platform, this extension will gather muck and reduce the amount of mud and dirt carried through to the platform.

Installing Load bars - continued

Your Te Pari load bars are splash and weather proof however they should not be left submerged in water. Because prolonged submersion can lead to serious water damage do not recess the loadbars into troughs in the foundation area as this will allow water to pool around the load bars and damage them.

The load bars can be bolted to the concrete pad or pinned in order to prevent movement.

For safety reasons, the load bars should be positioned as close to the ends of the platform or crush as practical. Any overhang should not exceed 150mm.

The load bar cables should be positioned so that potential damage is minimised. Keep cables away from animals so they cannot be chewed, walked on, or squashed in any way as any cable damage will affect the weight reading and require the complete loadbar to be returned to Te Pari for repair

The total weight of the platform or crush must rest upon the load bars in order to ensure accurate and consistent weight readings. Ensure that the load bars and platform are clear of any obstruction and that the installation is as level as possible. Good drainage is essential so that the load bars are not left sitting in puddles of muddy water.

Care when cleaning and hosing down to ensure no build-up of manure or mud around the load bars will extend the life of the load bars and prevent inaccuracies with weight readings.

CAUTION: Do not weld any metalwork that is in contact with the load bars. The load bars should be completely removed before any welding takes place as spurious currents will cause permanent damage to the load cells.

Testing the installation

- Connect the load bars to your Te Pari indicator.
- Turn on the indicator and press zero.
- Place a test weight at one end of the platform and note the reading on the indicator. The displayed weight should be stable.
- Remove the weight, check that the display returns to zero, then place the weight at the other end of the platform and take note of the reading.

The weight reading should not vary by more than 1 kg from one end to the other and should return to zero when the weight is removed. If this is not the case then check that the load bars or platform are not binding on anything such as a fence post etc, the installation is level and secure, and that there has been no cable damage during the installation. If necessary, loosening the anchor bolts may relieve tension and allow better results.

Care and Maintenance

Te Pari load bars are designed to withstand the harsh conditions associated with sheep and cattle crates and platforms. Taking care with installation and maintenance will prolong their life and ensure accurate recording

- When weighing ensure the animal is fully on the platform.
- Keep the underside of the platform and around the load bars free of stones or muck build-up.
- Store your indicator in a clean and dry environment and keep the indicator, load bars and cable plugs away from water as much as possible.
- The load bar cable plugs have caps which should always be screwed back on when not in use. If possible position the plugs so that they are not exposed to the weather when not being used.
- When cleaning the loadbars do not direct a water blaster directly at the loadcell area.