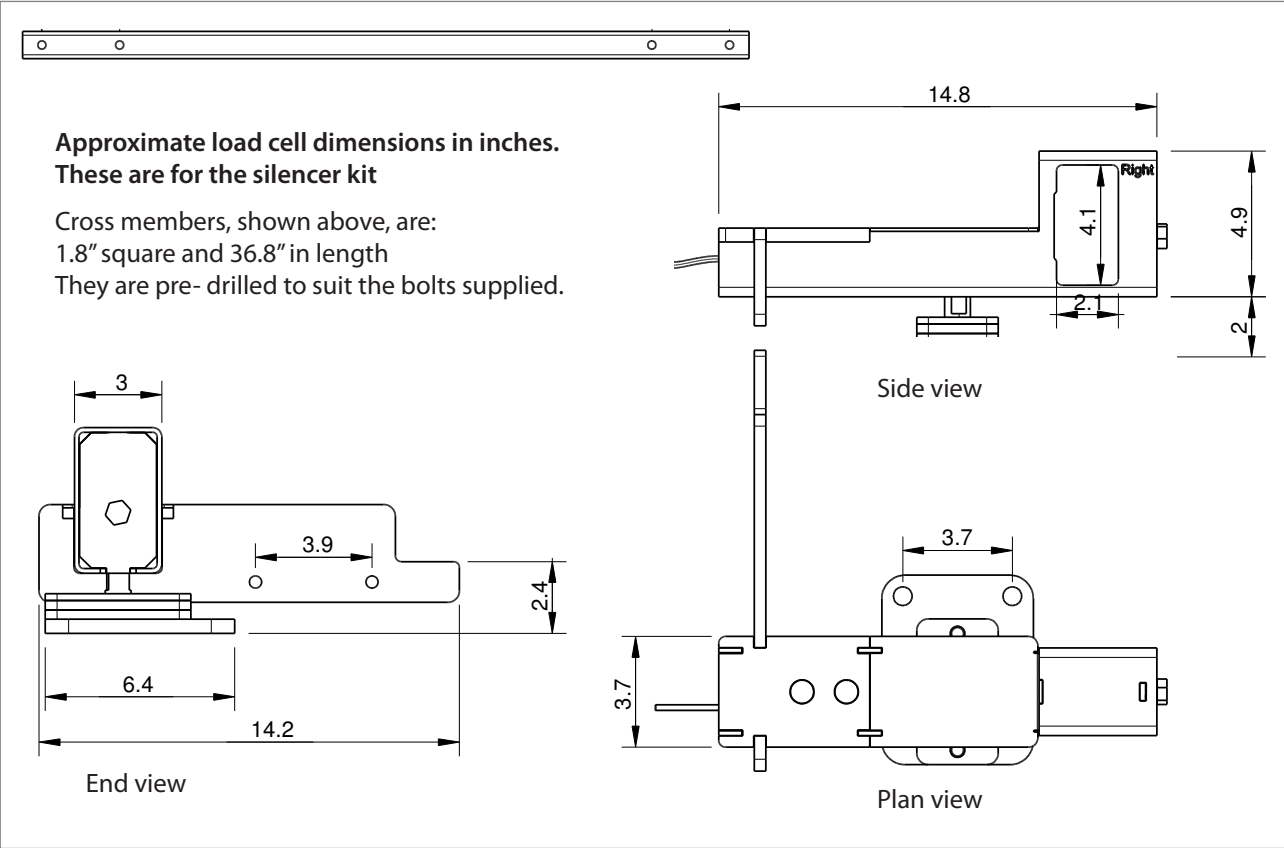


Specifications and dimensions - Silencer kit shown



Easy fit load cell system contents

- 4x slide on load cells
- 2x cross members supplied with bolts and Nylock nuts.
- 5 way junction box - 4x load cells to 1x scale indicator feed
- Stainless steel coil protected pre wired cables attached
- Load cell to junction box cables are 16.4 ft long
- Junction box to scale cable is 13 ft long
- Total system packed weight is 157lbs

Features and Specifications

- 8,800lb capacity
- Compact design prevent trip hazards
- Low profile design mounts chute just 2.5" off the ground
- Easy to fit and install

Codes

TSLB Te Pari Easy Fit Loadcell System to Suit Silencer Chutes (Rancher & HD Models)

T2WLC Te Pari Easy Fit Loadcell System to Suit 2W Hydraulic Chutes

TE PARI

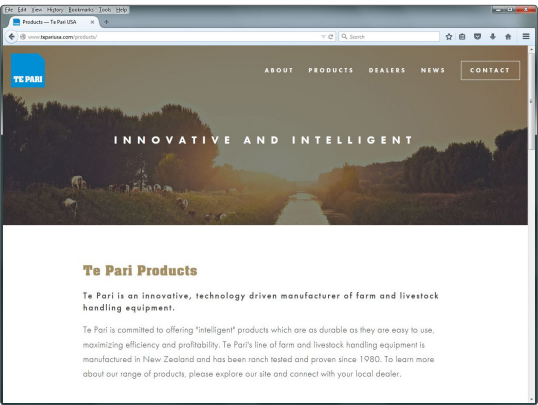
EASY FIT LOAD CELL SYSTEM

To suit 2W and Silencer Chute Installation guidelines

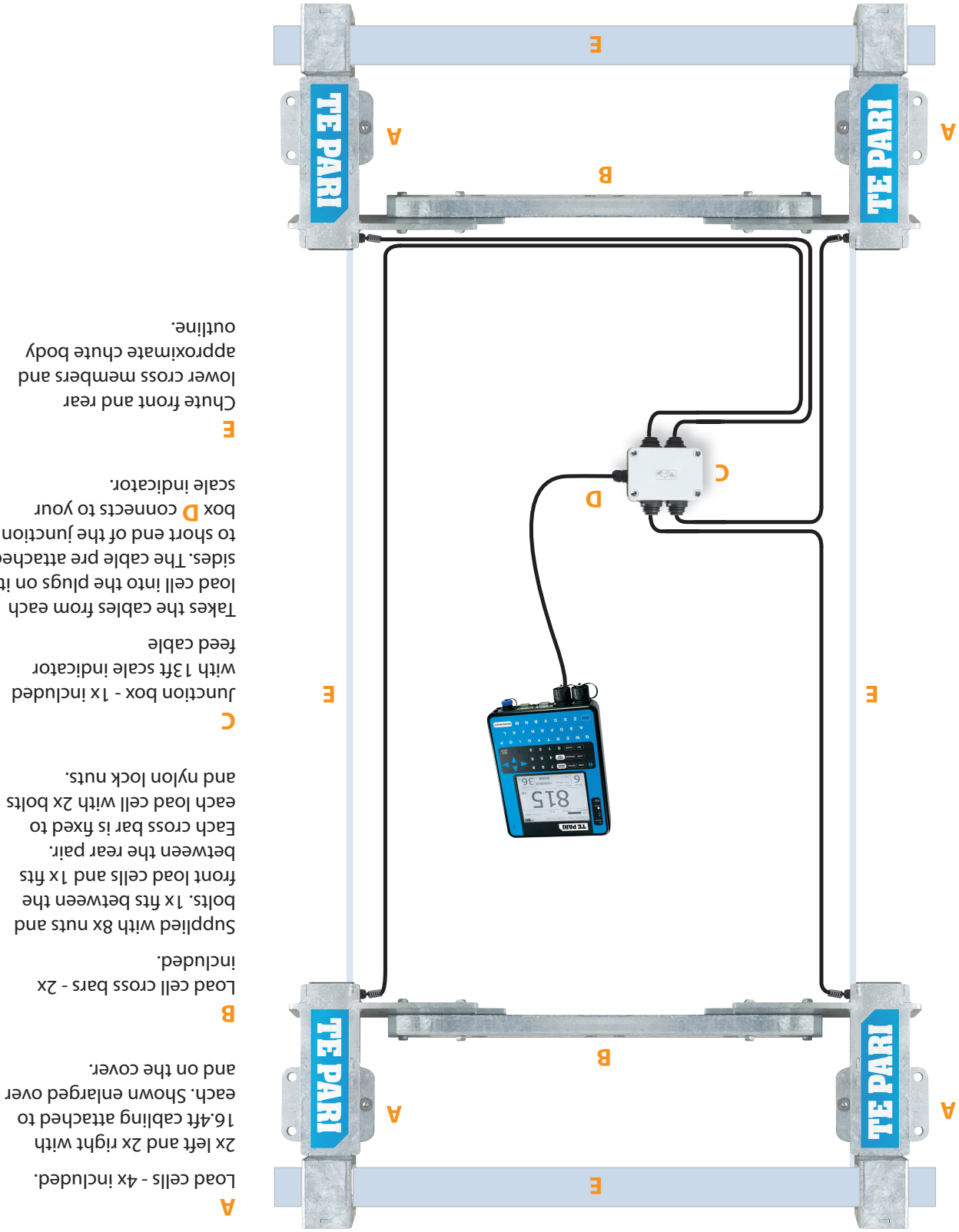


Easy fit load cell system includes:

- 4x load cells - 2x left hand and 2x right hand
- 2x load cell cross bars with 8x bolts and nylock nuts
- 1x 5 way junction box
- All cabling pre-wired and fitted
- Stainless steel coil spring protected cabling



www.tepariusa.com



A Load cells - 4x included.
2x left and 2x right with
16.4ft cabling attached to
each. Shown enlarged over
and on the cover.

B Load cell cross bars - 2x
included.

Supplied with 8x nuts and
bolts. 1x fits between the
front load cells and 1x fits
between the rear pair.
Each cross bar is fixed to
each load cell with 2x bolts
and nylon lock nuts.

C Junction box - 1x included
with 1.3ft scale indicator
feed cable
Takes the cables from each
load cell into the plugs on its
sides. The cable pre attached
to short end of the junction
box **D** connects to your
scale indicator.

E Chute front and rear
lower cross members and
approximate chute body
outline.

Easy fit load cell system

TE PARI

Be safe! - Crush hazard

Fitting the load cells to your chute requires
working beneath the chute while it is hoisted.
Ensure the chute is properly secured and safety
blocks are in place. Ensure everyone is clear before
lowering the chute back to ground level. Ensure
people not involved with the installation are well
out of harms way. Wear appropriate personal
protective equipment.

Fitting the load cells

Fit the load cell cross bar to one load cell using the
2x nuts and bolts provided **1A**. Raise the chute
and ensure it is secure. Slide the load cell with the
cross bar attached onto the chutes lower cross
member, **2B** shown in position. Slide the load cell
onto the opposite end of the chutes lower cross
member. Bolt the cross bar onto the load cell. The
load cells are now paired and you can centre them
on the chute body. Tighten the load cell retaining
bolts **2C**.

Repeat this procedure to fit the remaining pair of
load cells to the other end of the chute.
Ensure the area is clear, lower the chute and adjust
its position. The load cells are pre-drilled with holes
to fix them to the ground **1B** Dyna or rag bolts can
be used, these are not provided.

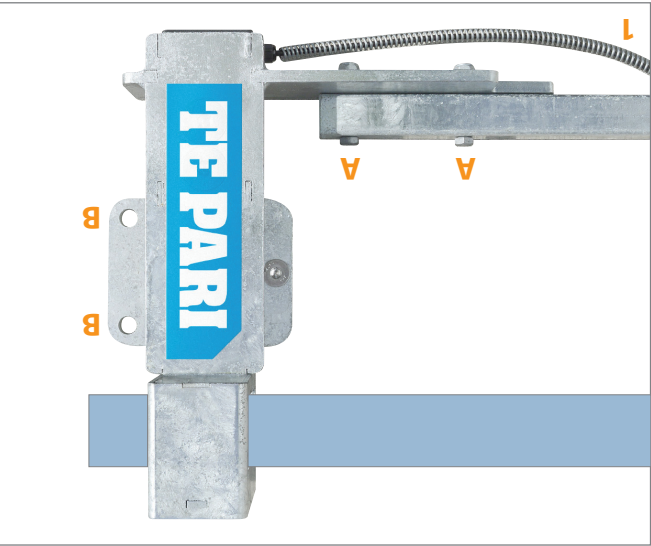
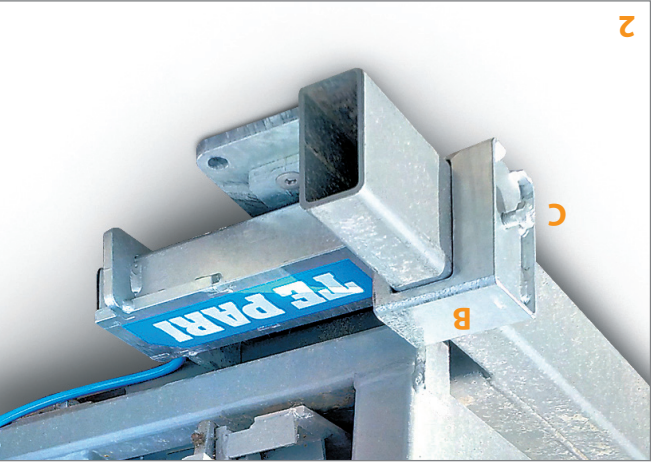
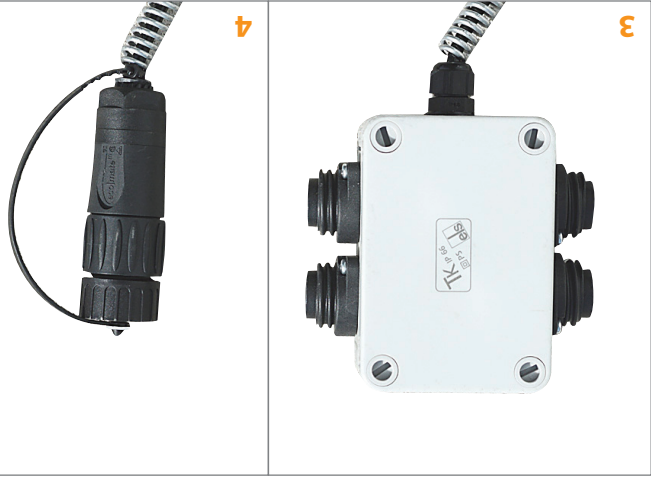
Cabling

16.4ft coil spring protected cabling is provided
attached to each load cell and a 1.3ft cable to the
junction box. Run the cabling to suit the location
of your scale and junction box using the schematic
as a guide.

You should run the cables so they are protected
from muck and pooling liquids. The same applies
for the position of the junction box.
We recommend taping things down first, and then
when you are happy with the position, cable tying
the cables and junction box onto the chute body.

Plugs

All plug fittings are the same, load cell to junction
cap fitted, and this should be replaced to protect
cable end when removing items.



Easy fit load cell system

TE PARI