

### Setting up for remote control operation

Remove the gate control lever from the top cross bracket and bolt it, with the bolts provided, to the top bracket, making sure it is on the opposite side to the trip plate levers.

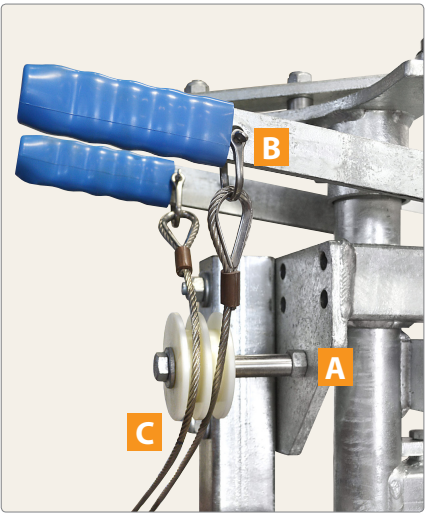
The pulley should be on the same side as the trip plate levers. If it isn't, fit the pulley to the correct side, threaded holes **A** are provided on both sides

Attach a length of 6 mm rope or cable to the hole provided **B** in the front trip plate lever, run it round the pulley **C** and down the outside of the race to your operators position. Repeat this process for the rear lever.

You should arrange, at the operators position, cleats or similar fittings for the control lines to be held out of the way when not in use.

Using a suitable rigid extension make a connection from the operators position across the top of the race to the gate control lever on the opposite side of the head bail.

If you change the operating side. The gate lever, complete with its extension, pulley, and ropes, will also need to change sides. Holes and brackets are already fitted on your Auto head bail for this purpose.

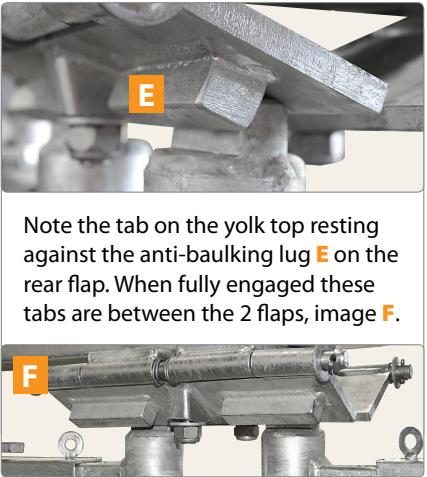


### Standard operating instructions

- 1 Pull rear trip plate lever - or rope, on auto - this trips the rear flap.
- 2 Push the gate control lever to open the gates back into the race
- 3 As the animal walks through it will catch the gates with its shoulder. This will close the head bail on the animal as it moves forward.

Notes: The extra lug on the rear trip **E** flap prevents the animal baulking and being able to back out. Remember with the wide gate setting for horned animals, you need to initiate the gate closure to the point where the auto closure mechanism operates.

- 4 To release the animal pull the front trip plate lever - or rope. This lets the animal release itself as it moves forward out of the headbail.
- 5 Steps **1** and **2** reset the head bail for the next animal.



Note the tab on the yolk top resting against the anti-baulking lug **E** on the rear flap. When fully engaged these tabs are between the 2 flaps, image **F**.

### Maintenance

To keep your Te Pari Auto head bail operating smoothly periodically grease the lower gate bearings at the nipples provided. Prior to starting a working session we recommend you give the head bail a quick check over. Paying particular attention to: the condition of the ropes, where used; the operation of the flaps; and the locking action of the head bail.

### Health and Safety

- Keep hands and fingers away from pivots and hinges.
- Do not enter the area in front of the head bail until you have checked that the animal is fully secured.
- When ever possible do not work alone.
- Make sure you read and understand the correct operating procedure for your head bail before you use it.

- Thank you for choosing Te Pari and purchasing your head bail from us,  
remember we are here to help and advise regarding any stock handling equipment

# TE PARI Auto head bail

### Introduction

Please read these instructions through before installing or using your Auto head bail. It is important that you are familiar with the Auto head bail's components, features and safe operation. With simple maintenance your Auto head bail will provide you with years of efficient service.



### Parts of your Auto head bail

- A** Gate control lever
  - B** Front and rear trip plate levers - the rear lever behind
  - C** Trip plates, the front trip plate is visible here with the rear trip plate behind it.
  - D** Pulley for remote control
- Items below here are replicated on both sides of the head bail
- E** Gate and yoke
  - F** Gate stop lugs
  - G** Rope cleats for head restraint
  - H** Gudgeon sleeve brackets
  - I** Upper yoke adjustment pins
  - J** Lower yoke adjustment bolts
  - K** Lower gate bearings
  - L** Bolted pivot lugs, two per side - right hand in use

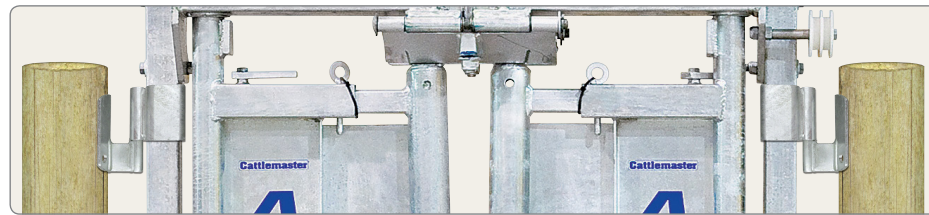
Your Auto head bail can be setup to operate from either side. To change sides. Hold down the front trip plate lever and undo its pivot bolt **L<sup>1</sup>**. Rotate the lever over to the opposite side and re-bolt the lever to that sides pivot lug **L<sup>2</sup>**. Repeat for the rear lever.



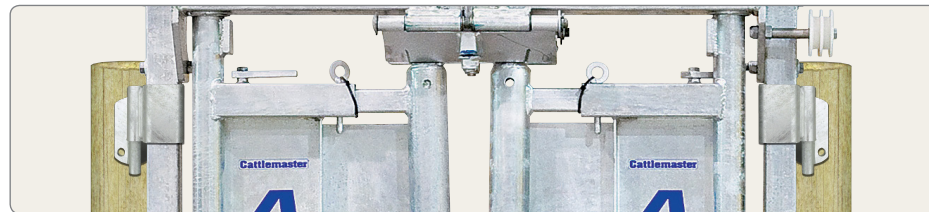
## Installation into a wooden race

Your Te Pari Auto head bail is easily installed into the cattle race by bolting the four gudgeon pin plates (two per side) to the main exit posts. The Auto head bail easily adjust for various race widths by simply altering the position of the gudgeon pin plates

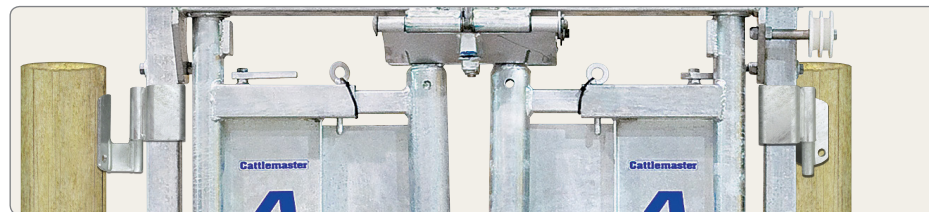
Both plates at the side - this is the preferred fixing method



Both plates facing backwards

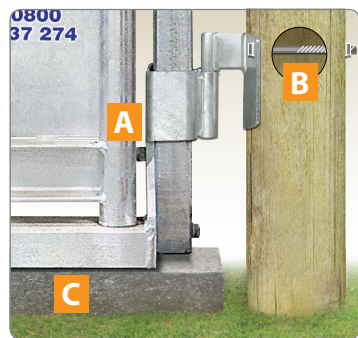


One plate to the side the other facing backwards



Dimensions	
Overall width	960 mm
Overall height	1,790 mm
Walk through Clearance	740 mm
Gross weight	130 kg

Further adjustment is possible by rotating the gudgeon sleeve bracket through 90° - so the female pipe socket faces backwards. To do this undo the two bolts at the top of the side frame, slide the gudgeon sleeve bracket off and and replace it pointing backwards. We don't normally recommend this method of fixing as the posts, depending on their size, can interfere with the entrance to the head bail.



You should always mount the gudgeon pin plates with the top pin pointing up and the lower pin pointing down as this prevents animals from lifting the head bail.

It is good practice to keep the bottom gudgeon sleeve bracket hard down on the frame base **A** as this eliminates the need to secure it from dropping down off the bottom gudgeon pin. Always bolt the top gudgeon pin plates to the post first, as high as possible yet still allowing for the gudgeon sleeve bracket to be dropped down onto the pin.

Next mount the head bail between the posts by slipping the top gudgeon sleeves onto top gudgeon pins. Now drop the lower gudgeon pins into the bottom sleeves with the pins pointing downward. To finish through bolt to the post **B**.

## Installation into a cattle crush or metal race

The head bail can be simply welded in position. The gudgeon pins can still be used to make adjustments for wider openings. The auto head bail can also be bolted in place in the same manner as for a wooden race.

## Catering for large and exotic breeds

Some large and exotic breeds of cattle are particularly tall at the shoulder. To accommodate these animals the head bail needs to be raised to the most efficient working height for them. To do this mount the head bail on a concrete nib **C** that is the depth required to provide the additional head bail height.

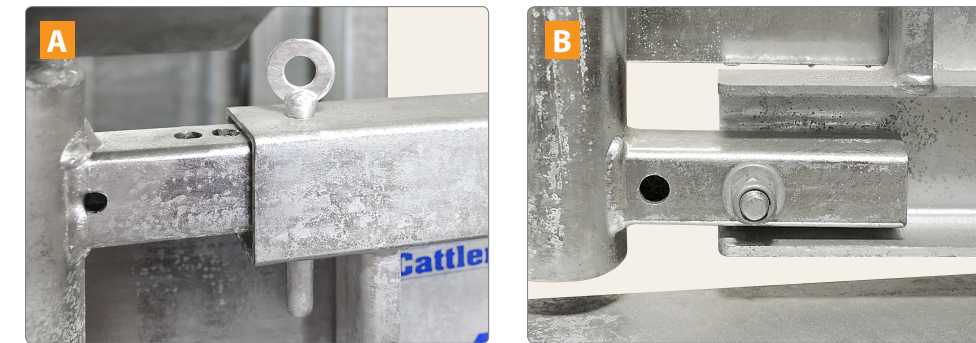
## Direct operation

Directly operating the head bail is usually the most efficient working method as most work is carried out in close proximity to the head bail area. When using direct operation the gate control lever should be attached to the same side as the trip plate levers.

Direct operation allows for total control without the head bail pulley or the fitting of ropes so if using direct operation the pulley can be removed and kept aside in case remote operation is required at a later date.

## Adjusting the yoke

To provide the optimum bailing of different sized animals the head bail yoke plates are adjustable. There are six upper and two lower yoke adjustments on each side.

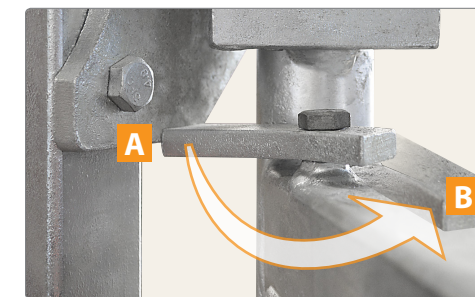


The yoke top adjustment **A** is made by a pin sitting through pre-drilled positioning holes. To adjust it, pull out the pin, move the yoke to desired position, then re-insert the pin through the positioning holes.

The yoke bottom adjustment **B** is made by a securing bolt. To change the lower yoke to the alternate position, remove the securing bolt, move the yoke to align the alternate settings holes and replace the bolt.

Note: altering the width of the yoke plates at the top changes their alignment with the front and back trip plates. It is important the leading edges of these flaps are flush with the top of the square head of the yoke. This allows the loads exerted by animals to be spread along the flap plate to the hinge and head base.

## Setting the inner opening of the gates



The Auto head bail' inward opening settings can be either narrowed to suit polled or dehorned cattle or widened to suit horned animals. Adjustment is made using the fitted gate stop lugs.

The stop lugs on the left and right hand sides are slightly different lengths. Because either lug will effectively stop the gate on its own this provides you with a further range of settings.

**For polled or dehorned cattle** - Turn the stop lugs at the top of the gates inwards toward the side frame and tighten the locking bolt. This restricts the width the gates will open and is the position **A**.

**For horned animals** - When working with horned animals the stop lugs are positioned in-line with the top of the gate, this lets the gates open fully inwards, position **B** in the photo.

Note: When the gates are set as above for horned animals, the animals shoulders will not automatically trigger closure of the gates. So you need to manually start the gate closure to the point where automatic closure is triggered. We recommend the installation of a baulk gate as this not only provides a further level of safety, but also allows the automatic closure feature to operate without the users intervention.

## Head restraints

There are occasions like certain veterinary procedures in which head restraint is desirable.

The Auto head bail has four conveniently placed "nose clamp" rope cleats for securing the animals head in any desired position, these are shown as item **G** on the front cover