

TE PARI

Quick setup guide

Tru-Test XR300
or ID3000 with
Racewell Super Drafter



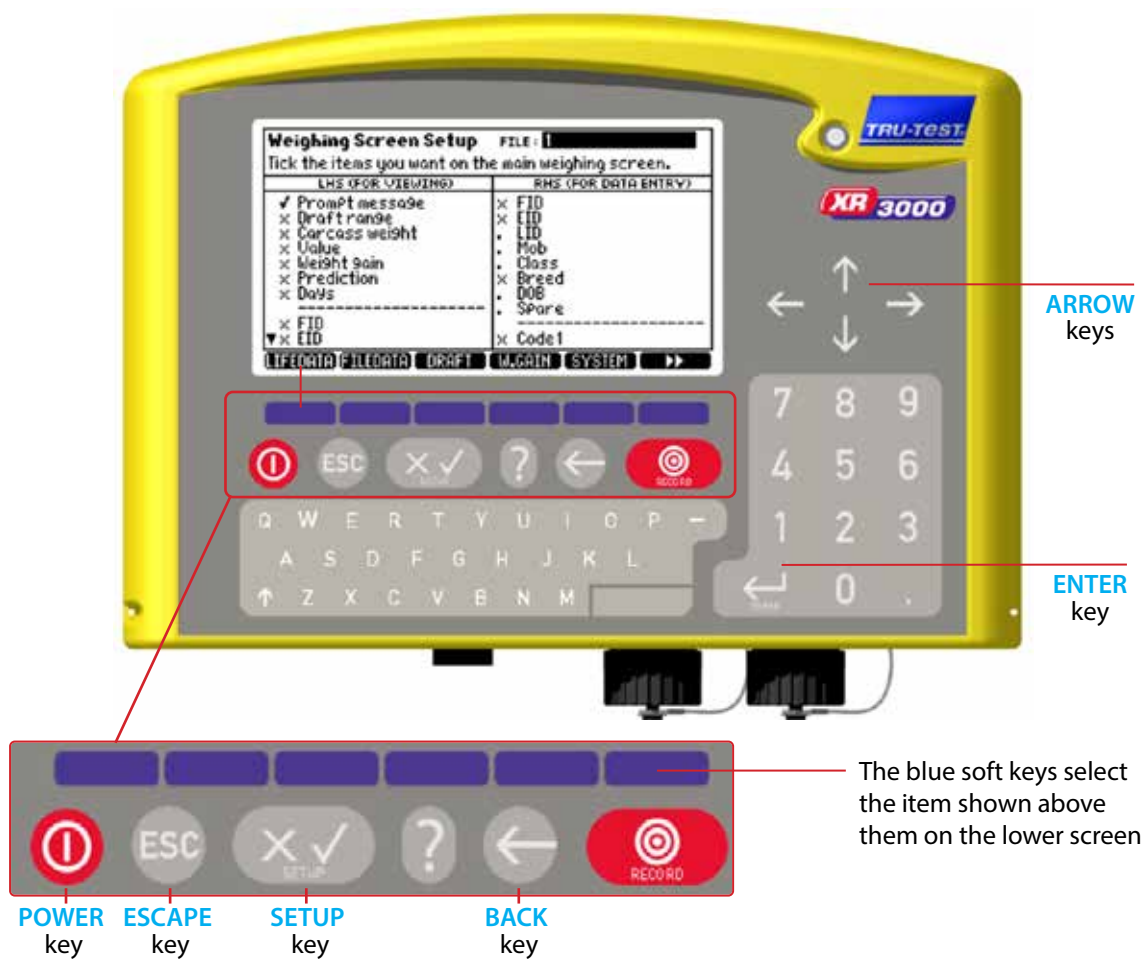
TRU-TEST®



RACEWELL

Overview

The primary buttons used during setup



Selecting and setting items - Read this first

To change an item you enter its screen by pressing the blue soft key below its title in the lower screen area
Changing an items setting is either a keyed in entry or a selection from a list.

1) Selecting and changing a setting from a list of options:

Use the Arrow keys to highlight the entry on screen
Press the **ENTER** key to display the list of available options for the entry
Arrow to highlight the required option
Press the **ENTER** key to select the option and close the list

2) Select and change the setting with keypad input:

You still arrow to the entry you wish to change but then you key in the data using the keypad
Once keyed in press the **ENTER** key to accept your entry and move on.

Physical Connections

Before using your weigh scale please read the owner's manual and completely charge up your weigh scale system.

Connect the comms lead connection between your Tru-Test scale and the Racewell Super Drafter.

For further support contact your local Tru-test area representative, visit the website at www.tru-test.com or call technical assistance on 0800 2632 787

Activate drafting and setting your drafting weight ranges



Press the **SETUP** key



Press the blue soft key below **DRAFT** on the screen



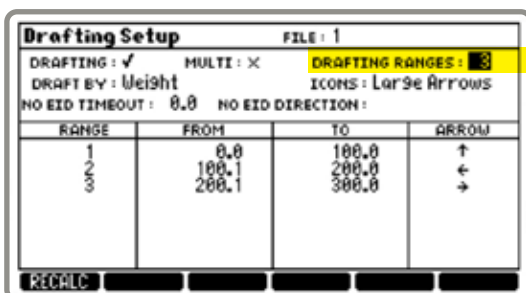
Arrow down to **DRAFTING**



Press the **ENTER** key and arrow to the tick

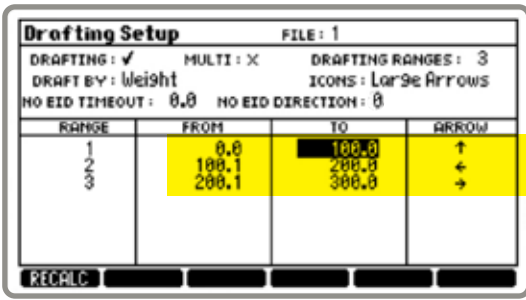


Press the **ENTER** key to set it



Arrow to **DRAFTING RANGES** and press **3** on the Keypad





Arrow to and enter the weight ranges for your 3 drafts in the **FROM** and **TO** columns

Also select the draft direction for each draft in the **ARROW** column.



The other entries should already contain the correct values, if not, Arrow to them and set them as follows:

ICONS: set to **Large Arrows**

DRAFT BY: set to **Weight**

NO EID TIMEOUT: set to **0.0**

NO EID DIRECTION: set to **0**

Note - these values may differ depending on your current drafting preferences.

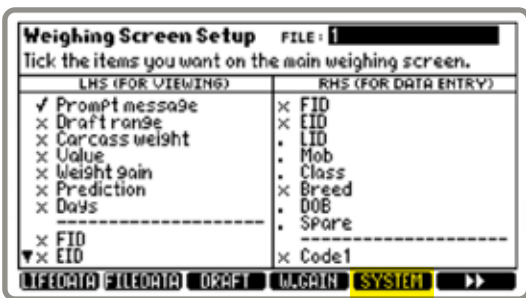
When the entries are set, press the escape key to return to the main screen.



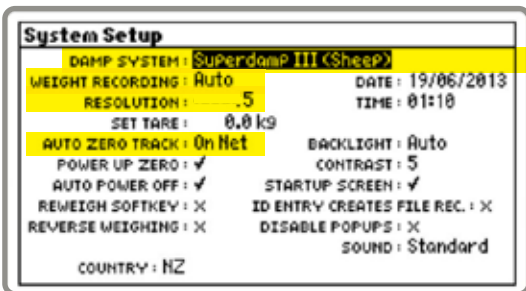
System settings



Press the **SETUP** key



Press the blue soft key below **SYSTEM** on the screen



Arrow to **DAMP SYSTEM:** and press the **ENTER** key

Arrow to the **Superdamp III (Sheep)** entry in the list

Press the **ENTER** key to select it



The other entries should already contain the correct values, if not, Arrow to them and set them as follows:

WEIGHT RECORDING: set to **Auto**

RESOLUTION: set to **.5**

AUTO ZERO TRACK: set to **On Net**

Press the back arrow to return to the **Weighing Screen Setup**



Check the serial communication settings

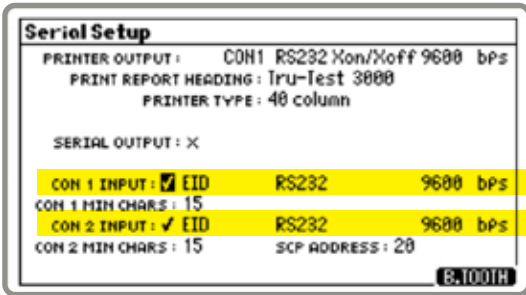


From the [Weighing Screen Setup](#)

Press the blue soft key below the page right arrows to scroll across



Press the blue soft key below **SERIAL** on the screen



Check the values for the entries alongside **CON 1 INPUT:** and **CON 2 INPUT:**



If not set correctly select and change each of the entries as follows:

CON 1 INPUT: – ✓ – EID – RS232 – 9600 bps

CON 2 INPUT: – ✓ – EID – RS232 – 9600 bps

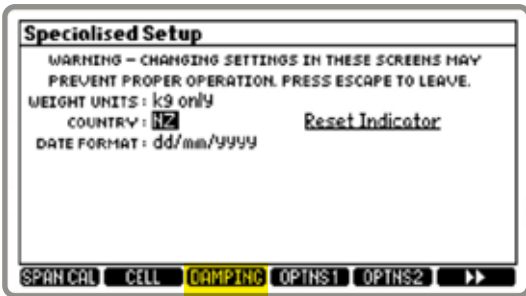
When the entries are set, press the escape key to return to the main screen.



Specialised setup

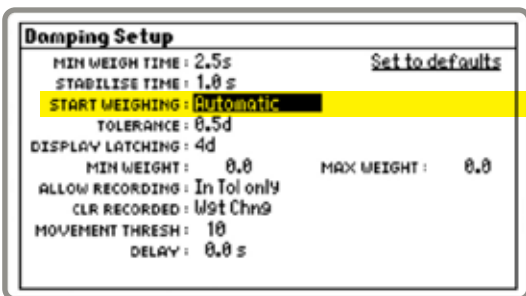


Press the **SETUP** and the **ESCAPE** key together



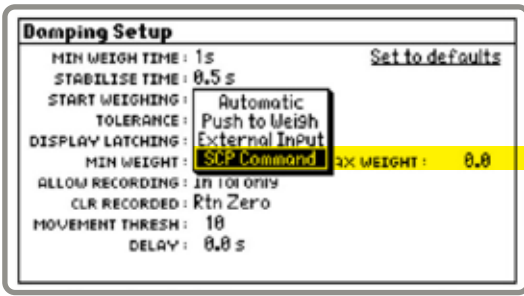
This displays the **Specialised Setup** screen

Press the blue soft key below **DAMPING** on the screen



Arrow to **START WEIGHING:** and press the **ENTER** key





Arrow to the **SCP Command** entry in the list



Press the **ENTER** key to select it

If you wish to use your indicator in another situation without the Racewell, you need to set this back to **Automatic**.

Check and set the following options: **MIN WEIGH TIME**: is set to **1.5 s**. And the **DELAY**: is set to **0.0 s**.

The other entries should already contain the correct values.

When the entries are set, press the escape key to return to the main screen.



Loadbar Settings -

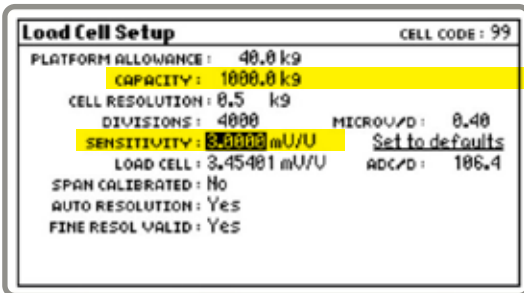
Your Racewell Super Drafter has the loadbars built in.

The following settings need to be applied to make them work correctly:

CAPACITY: set to **1000.0 kg** **SENSITIVITY**: set to **3.0000 mV/V** to set these values:



Press the **SETUP** and the **ESCAPE** key together



Press the blue soft key below **CELL** on the screen to enter the **Load Cell Setup** screen

Ensure the **CAPACITY**: and **SENSITIVITY**: entries have the correct values as shown above, and change as required.

When the entries are set, press the escape key to return to the main screen.



To start automatic drafting

Select auto on the Racewell Drafter to start operation.



TE PARI
PRODUCTS Ltd
www.tepari.com

Australian Office

44 Ricky Way,
Epping, 3076
Australia

Freephone: 1800 650 682

Head Office

9 Endeavour Crescent
PO Box 25, Oamaru, 9400,
New Zealand

Freephone: 0800 837 274