

**TE PARI**

# Racewell HD3 and HD6

Gallagher **SmartTSi**



Set up guidelines for a  
Gallagher SmartTSi scale indicator  
on a Te Pari Racewell HD3 or HD6  
Sheep handling System

March 2015



### Physical connection

To connect your Racewell and a Gallagher TSi use either a Racewell-Gallagher coms cable (part number RWA1058) and the null modem adaptor (supplied by Gallagher) or use a Racewell-Te Pari Scale or TruTest scale coms cable (part number RWA1157)

No Animal Identification

Loadbars not connected

Live Weight

Statistics for: 29 Jan 15 - Tpp test 1

	Min	Max	Count	Average	Total	Unit
All Animals:	14.6	91.0	21	30.1	633.0	kg

Gate	Current Range	Count	Average	Total
1	0 to 50	18	22.4	404.0
2	50.1 to 100	3	76.3	229.0
3	over 100	0	0.0	0.0

Session: Collect

Stats

Records

Trait

Activity

Notes

Pedigree

Options

Office

Statistics

Turn the indicator on and tap the **Options** tab.

Session Name: 29 Jan 15 - Tpp test 1

Session Type: Max speed (sheep only), unlocks at 30% drop of locked weight

**Session Options**

- Select a Different Session
- Create New Session
- Change Session Defaults
- Change Session Options
- Rename Session
- Delete Session
- Drafting Setup

**Setup Options**

- Connect Equipment
- Tag Number
- Traits
- Activities
- Life Data
- Sounds & Alert
- Customise View
- Calculated Values
- Groups
- Locations
- Session Types
- Printer
- Location or Date/Time

**Database Options**

- Backup
- Restore

Version: v2.2.1

Back

**Options**

Tap the **Connect Equipment** tab.

Bluetooth

EID Standard Reader on Bluetooth  
Settings: GGL HR5  
(00:07:80:52:A3:94)

Change

Port 1 Unused

Change

Custom on Port 2  
Settings: Baud Rate 9600, No  
handshaking

Change

Back

**Options > Connect Equipment**

Tap the **Change** tab of the Port 2 box.

Show Settings

For this port, Select the  
connected:

- Reader
- Drafter
- Printer
- Data Logger
- Pregnancy Scanner
- Port Unused

Custom on Port 2  
Settings: Baud Rate 9600, No  
handshaking

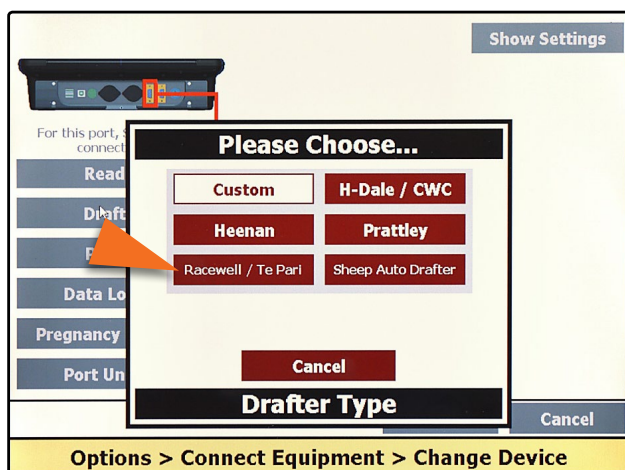
Options

OK

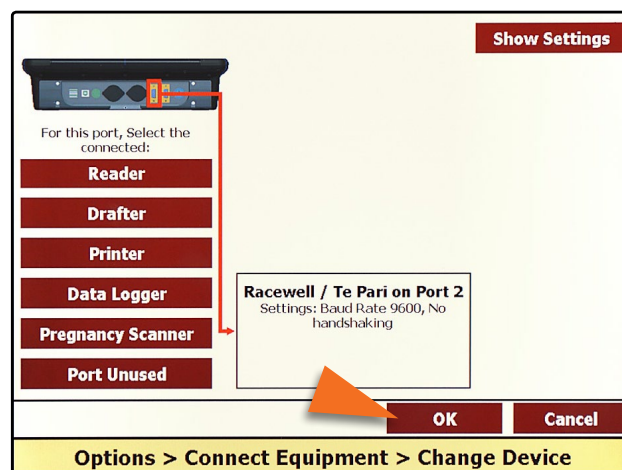
Cancel

**Options > Connect Equipment > Change Device**

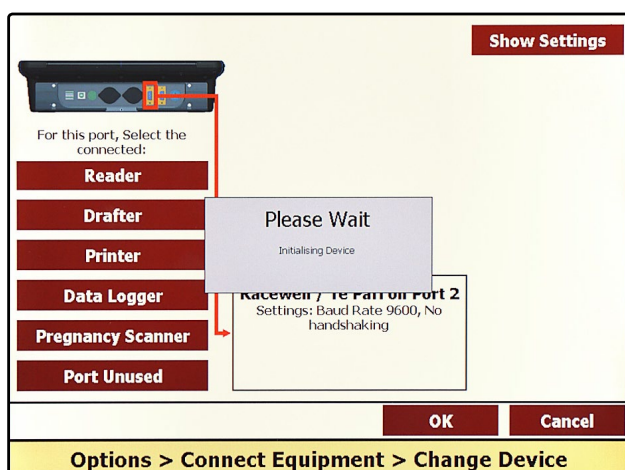
Tap the **Drafter** tab.



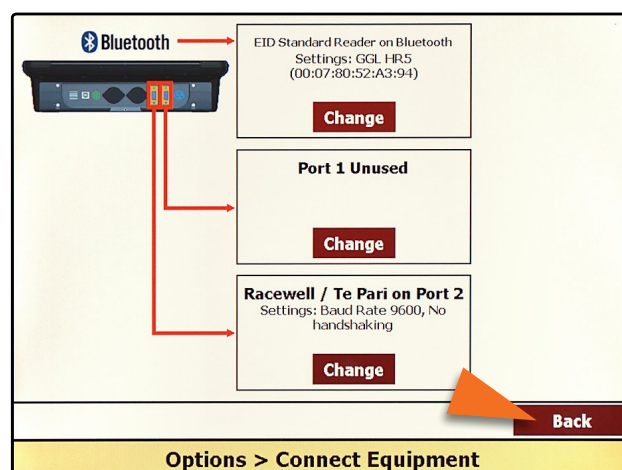
Tap the **Racewell / Te Pari** tab to choose it.



Tap the **OK** tab.



A **Please Wait** panel is displayed while it initialises.



Once initialised tap the **Back** tab.





Session Name: 29 Jan 15 - Tpp test1  
Session Type: Max speed (sheep only), unlocks at 30% drop of locked weight

Session Options	Setup Options
Select a Different Session	Connect Equipment
Create New Session	Tag Number
Change Session Defaults	Traits
Change Session Options	Life Data
Rename Session	Customise View
Delete Session	Groups
Drafting Setup	Locations
	Session Types
	Printer
	Location or Date/Time

Database Options

Backup Restore

Version: v2.21

Back

Options

You are returned to the **Options** screen. Tap the **Change Session Defaults** tab to set your draft options.

1. **Rename Session** Session Name: 29 Jan 15 - Tpp test1  
(The current date is automatically included. The rest of the session name is optional)  
**Enter Session Options** Max speed (sheep only), unlocks at 30% drop of locked weight

2. Read Out Weight **is ON** **Turn OFF**  
You must also turn Sound On to enable this option.

3. Drafting by Weight **is ON** **Turn OFF**

OK Next Cancel

Options > Change Session Defaults

Ensure item **3. Drafting by Weight** is set to **is ON**  
Tap **Next** to proceed to set you weight ranges.

**Copy Drafting Setup** from another session.

Drafting: **3 Way**

Gate	Sound	Weight Limit (kg)	Weight Range (kg)
1	Gate 1	50	0 to 50
2	Gate 2	100	50.1 to 100
3	Gate 3		over 100

OK Back Cancel

Change Session Defaults > Draft by Weight Limits

Tap the **Weight Limit (kg)** tab for each draft and key in the top weight for each. Weight ranges follow on from each other automatically. Tap **OK** when done.

No Animal Identification Loadbars not connected

Live Weight Statistics for: 29 Jan 15 - Tpp test1

	Min	Max	Count	Average	Total	Unit
All Animals:	14.6	91.0	21	30.1	633.0	kg

Gate	Current Range	Count	Average	Total
1	0 to 50	18	22.4	404.0
2	50.1 to 100	3	76.3	229.0
3	over 100	0	0.0	0.0

Session: Collect Stats Records Trait Activity Notes Pedigree Options Office

History:

Waiting for next animal M

You are returned to the main screen to carry on.