

TE PARI

Racewell DR3/DR5 Auto Drafter



Installation and Operators Manual

Contents

DR3/DR5 operational setup	3–4
Setting up the DR3/DR5 Auto drafter	3
The compressor	3
New & old remote control button mapping	4
Overviews of the DR3 & DR5	5–6
DR3 auto drafter – Front view/Back view with drafting zones	5
DR5 auto drafter with drafting zones	6
Dashboard control panel	7
Right hand button – Entry gate button	
Draft switch	
Auto/Manual switch	
On/Off switch	
Left hand button – Exit gate button	
Positioning the sensor eyes	8
Warranty	9
Online Product Registration	9
Warranty Claims and Return Forms	9
Trouble shooting guide	10–11
Hazard Identification	12
EC Declaration of Conformity Machinery	13
Contact us	Back

Racewell DR3/DR5 AUTO DRAFTER



Setting up the DR3/DR5 Auto Drafter

Your Auto Drafter requires a 240v power supply, or 12v battery and compressed air supply.

Please read and understand the instructions before operating your Auto Drafter.

The compressor

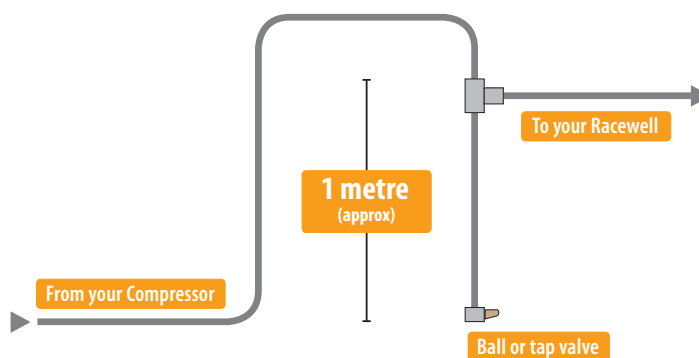
We recommend a 7 or 8 cfm belt driven compressor capable of a minimum of 90 psi. If the compressor is too small the Racewell will run slowly and may not operate properly.

The compressor does not need to be close to the Racewell, in fact having it at some distance reduces noise levels in the working area. It is important to run compressors in a well ventilated area as close as possible to a main supply near a switchboard – this avoids the use of leads which can affect the power input. From time to time the oil level on the dipstick should be checked. Water should be drained from the air reservoir, after every use.

Please note: when turning the compressor on or off use the switch on the compressor and not the switch at the power source.

This applies to all compressors, because air is not discharged, the compressor is being asked to start under load and this can burn out its capacitor.

Attaching the air fittings and connecting the compressor



Pipe the air from the compressor to the Racewell via standard a 15mm (1/2 inch) alkathene water line. We have some Racewells working with the compressor up to 2kms away from the work site.

If your compressor is situated some distance from your Racewell we recommend the airline configuration shown here.

This provides a purge tap or ball valve, which allows condensation to be periodically removed from the air system. Assemble the airline and connect to the compressor. Plug the compressor into a power source and turn on. Finally, turn the compressor on. Always turn the compressor on or off at the unit and not the power source.

Racewell DR3/DR5 AUTO DRAFTER

TE PARI

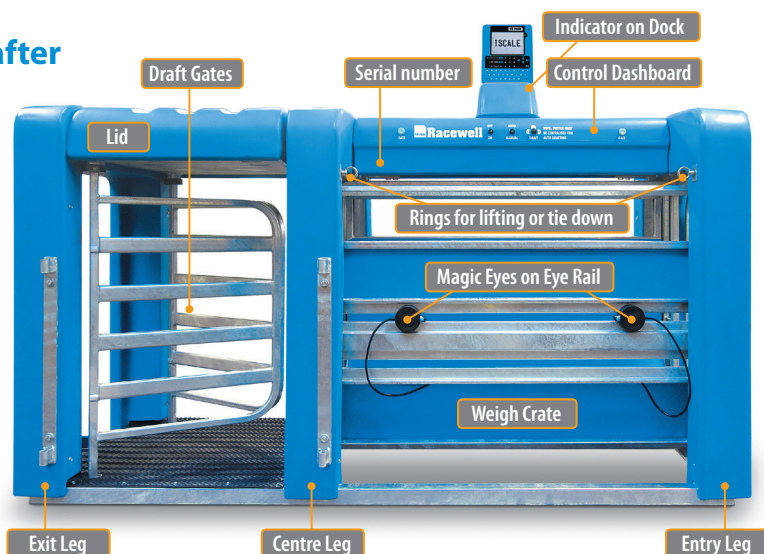
Remote control button mapping



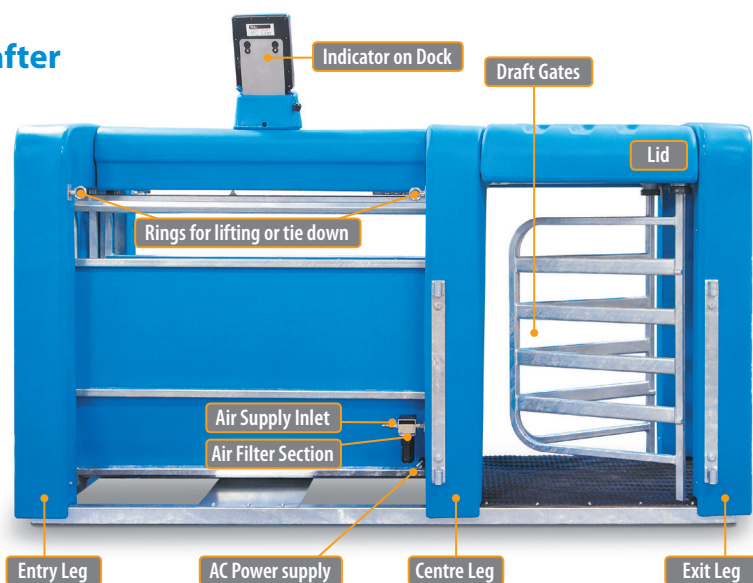
Racewell DR3/DR5 AUTO DRAFTER

TE PARI

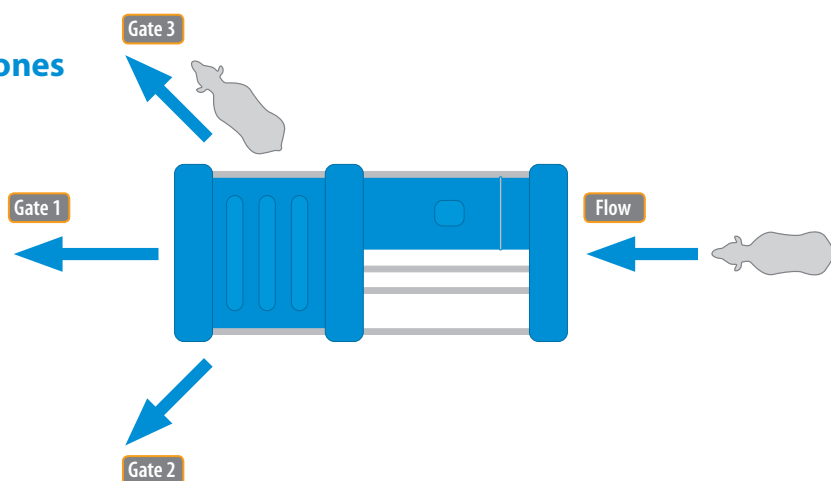
DR3 Auto Drafter –Front view



DR3 Auto Drafter –Back view

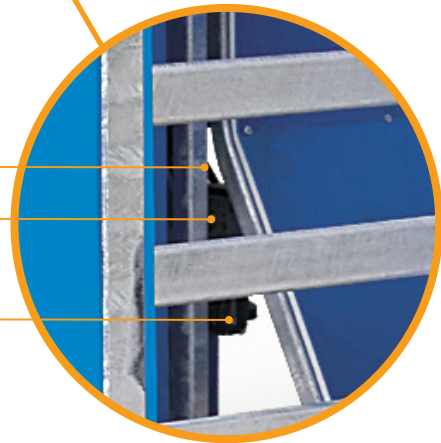
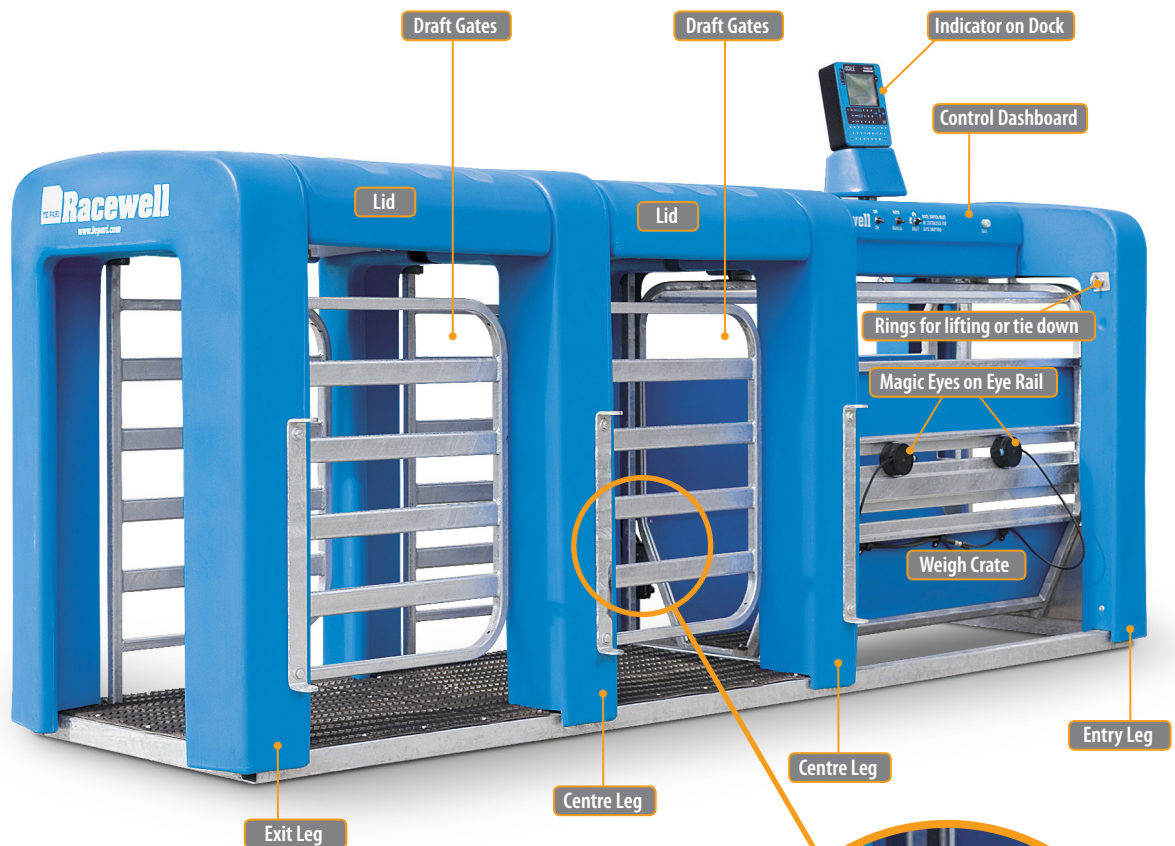


Drafting zones

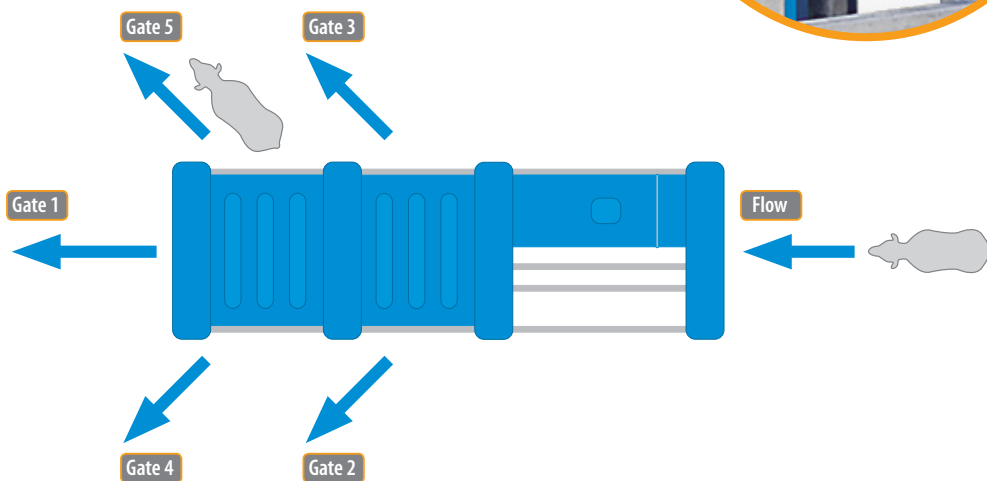


Racewell DR3/DR5 AUTO DRAFTER

TE PARI



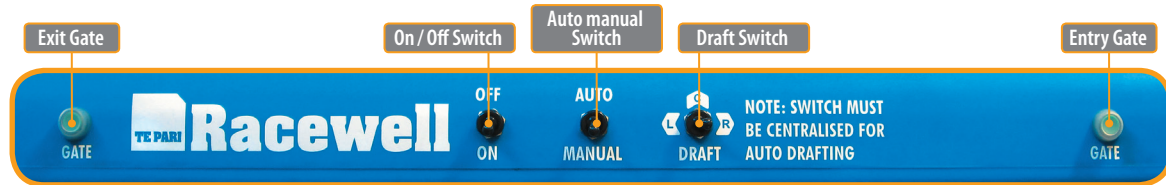
Drafting zones



Racewell DR3/DR5 AUTO DRAFTER



Dashboard controls and their use



Below list the operating options on this unit. Starting from the right on the dash.

Right hand button–Entry gate button



Push this button to open the entry gate, push it again to close the entry gate. The gate button works in either manual, or automatic operation. The sensor eye will also trigger the gate to close when in auto mode.

Draft switch



This switch manually opens and closes either the left hand or right hand drafting gates.

Note: when in auto draft mode this switch must be in the centre position.

Auto manual switch



This switch selects either manual or auto operation.

On Off switch



This is the master power switch that turns the machine on or off.

We recommend turning this switch off when the unit is not in use.

Left hand button – Exit gate button



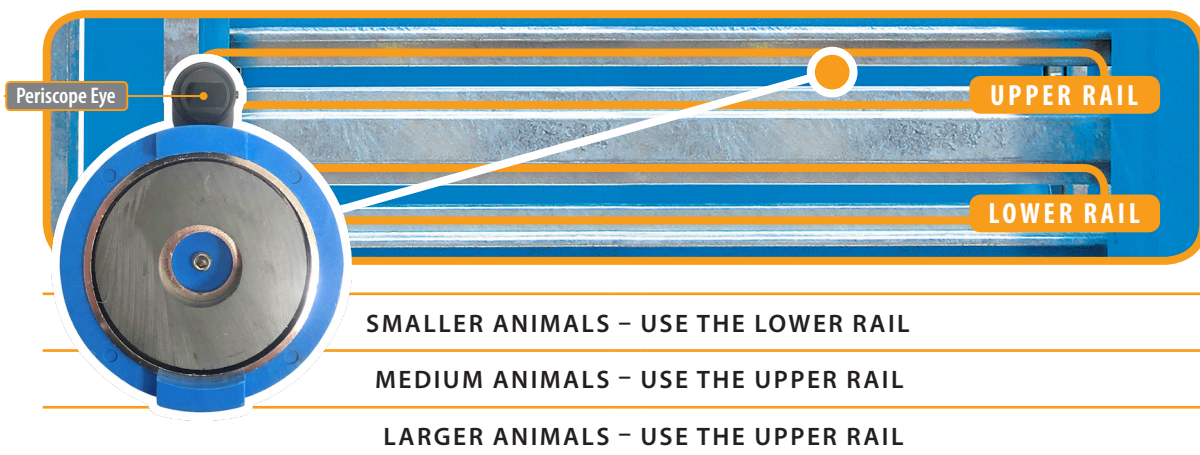
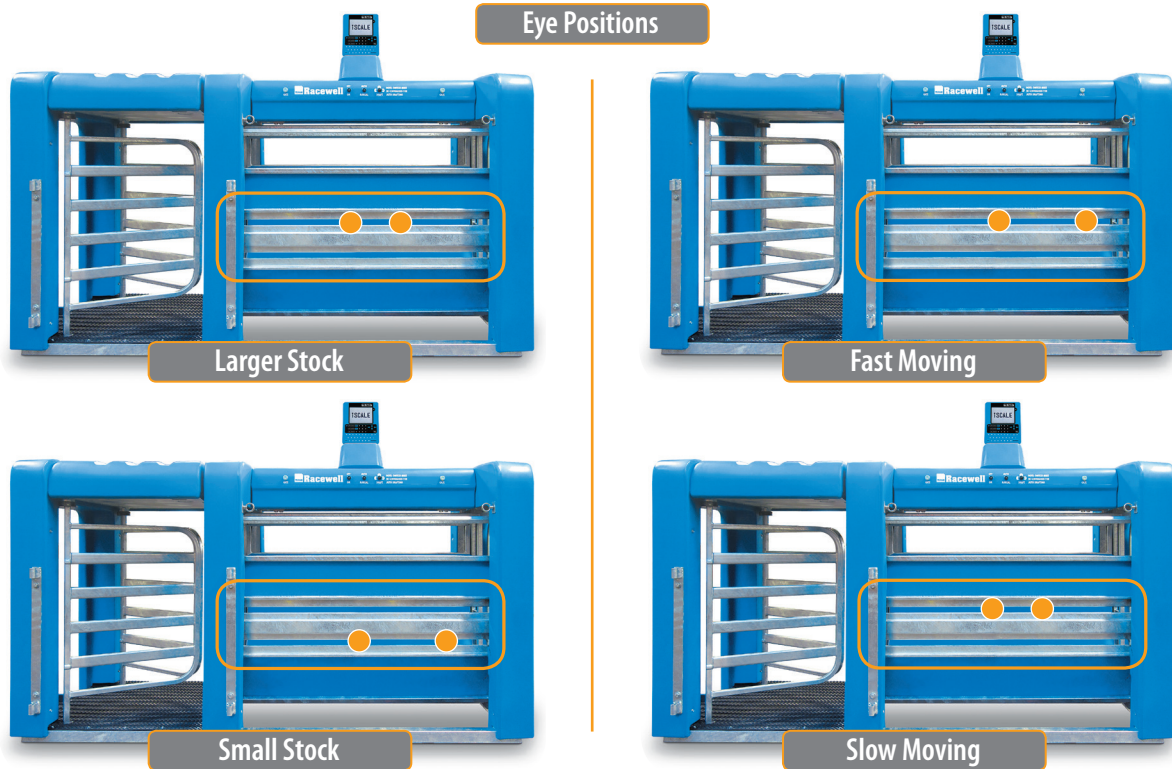
The left hand exit gate button operates the exit gate. Push this button to open the exit gate and push it again to close the exit gate. It works in the same fashion as the entry gate.

Racewell DR3/DR5 AUTO DRAFTER

TE PARI

Positioning the sensor eyes – guidelines

This is a general guide, as the difference between mature and young animals is great. You will soon get used to way the eyes operate and learn the best positions for them that will suit the varying sizes of animals in your operation.



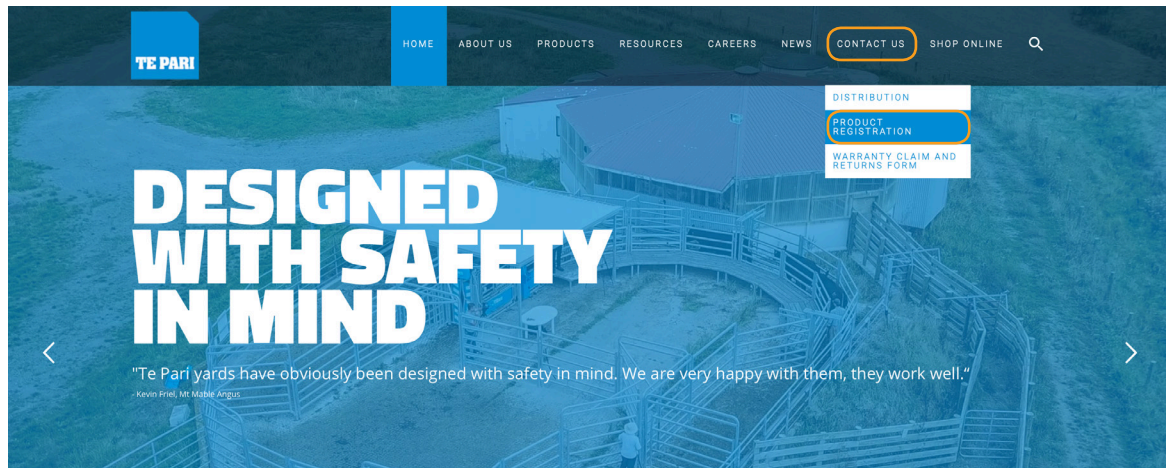
Please Note: The speed of the animals entering the DR3 will also affect the required eye position. Wool, dust and debris covering any of the eyes can affect their operation. Make sure that the lenses of the eyes are clear at all times.

Racewell DR3/DR5 AUTO DRAFTER

TE PARI

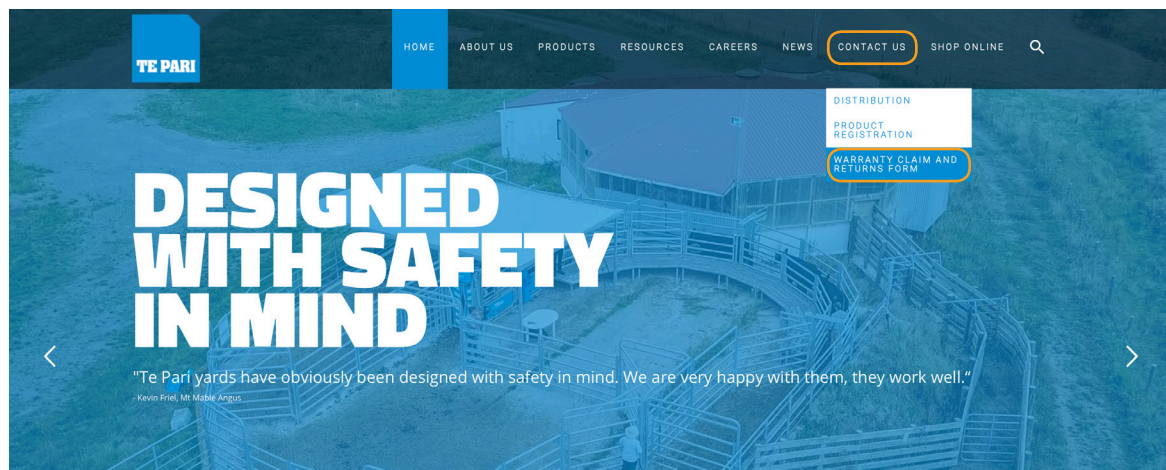
Product Registration

Register your Te Pari DR3 or DR5 Racewell via the Te Pari website. This can be found by clicking on the **Contact Us** drop down menu and takes minutes to complete. By registering your product with us ensures that we have all your details should they be needed in the future.



Warranty Claims and Returns Form

Fill out and submit this form for any warranty claims or required returns. All submitted queries will be contacted within two business days from submission.



Racewell DR3/DR5 Sheep handler trouble shooting guide

- I Please check this trouble shooting guide before ringing customer support, as often something quite simple could be the problem.
- I A service charge will be made for call outs if the fault is not covered by your warranty.
- I For your safety, and that of others, never leave the unit operational when not attended.

SYMPTOM	
POSSIBLE CAUSES	POSSIBLE SOLUTIONS
NO POWER AT UNIT AND IT WON'T GO	
12v adaptor not getting power Faulty extension cords to 12V adaptor Wire loose/off in autobox No air to unit	Check the 12v adaptor <i>jug</i> cord is firmly connected Check all extension cords Check wiring generally for breaks or chew marks Check the air lines and compressor
SHEEP UNIT DOING UNUSUAL THINGS	
Fluctuating power supply Faulty compressor	Check power and compressor and for stable weight Check compressor is operating correctly
ENTRY GATE SHUTTING BEFORE SHEEP ENTERS	
Magic eyes obscured by dust or wool	Check the magic eyes for dust on the lenses Also check they have no loose wool in front of them
DRAFTING THE WRONG WAY FOR PRESET WEIGHTS OR DRAFTING GATES HIT AND STICK TOGETHER WHEN ON AUTO	
Draft switch	Ensure the manual draft switch is in the central position
EVERYTHING WORKS APART FROM THE DRAFTER	
Indicator not communicating with drafter	Check coms cable for damage Ensure auto drafting option on your indicator is active
REMOTE CONTROL IS NOT WORKING PROPERLY OR AT ALL	
Flat remote control battery Remote is not programmed to your unit	Check and replace as required Program remote to your unit by turning on the unit then: For a 4 button remote: press down buttons 1 and 2 for 10 seconds.

PARTS OF THE UNIT ARE WORKING SLOWLY	
Constricted, broken or punctured air lines Compressor pressure is low	Check the airlines Ensure no part of the unit is resting upon the airlines
REDUCTION IN AIR PRESSURE	
Water trap filters	Check visually every 3 months and replaced as required
EYES ARE NOT WORKING	
Dirty or broken eye Eye cables broken or frayed	Clean and re-check, replace if required Replace cable from autobox to eyes
THE INDICATOR DISPLAYS -----	
There is a problem with the loadbars	Contact the manufacturer
INDICATOR READ OUT IS FLUCTUATING OR NOT ZEROING	
Plugs not completely connected Plugs are damp Battery is not adequately charged Unit is damp Electrical interference	Check the plug that goes over the loadbar collar is not preventing the pins from engaging properly Check loadbar cables are firmly in place, don't over tighten Check for moisture – clean with methylated spirits Ensure dust caps are screwed together Check battery charge state Check indicator to unit cord Electrical interference from a short on a electric fence can affect your indicator Battery and unit charges must be kept dry
NOT AUTOMATICALLY DRAFTING OR RELEASING	
Comms cable fault Incorrect indicator settings	Communication cable from indicator to unit is damaged or has dirty terminals – clean terminals with CRC Communications cable is in the wrong port Check your indicator settings are correct
TRU-TEST INDICATOR DISPLAYS WAIT FOR TRIGGER	
Dirty eyes Faulty Y or Comms cable	Clean eyes Check the Y and Communications cables and the cables pins for damage, replace if required

Racewell DR3/DR5 AUTO DRAFTER

TE PARI

Hazard Identification on a DR3 and DR5

The Racewell Drafter has moving gates positioned at both the front and rear of the unit. Keep hands clear to avoid the risk of a crush injury when the machine is operational.



NOTE: If a stock prodder is used to work stock with the machine, the warranty is void as the current can damage electrical componentry.

EC DECLARATION OF CONFORMITY MACHINERY

(according to Annex II.1.A of the Machinery Directive)

Te Pari Products Ltd hereby declares as manufacturer that the Racewell Sheep Drafter with specifications:

Machine	:	
Type	:	
Serial	:	
Year	:	

Meets the provisions of the following Directives:

Machinery Directive (2006/42/EG)

And furthermore declares that (parts of) the following harmonized standards have been applied:

ISO 14120: Safety of machinery – Guards – General requirements for the design and construction of fixed and movable guards

IEC 60204-1: 2006 Safety of machinery – Electrical equipment of machines
Part 1: General requirements

ISO 13849-1: Safety of machinery – Safety-related parts of control systems
Part 1: General principles for design

IEC 61310-1: 2008 Safety of machinery. Indication, marking and actuation.
Part 1: Requirements for visual, auditory and tactile signals

IEC 61310-2: 2008 Safety of machinery. Indication, marking and actuation.
Part 2: Requirements for marking

ISO 4414: 2010 Pneumatic fluid power – General rules and safety requirements for systems and their components

Manufacturer	:	Te Pari Products Ltd
Address	:	9 Endeavour Crescent, Oamaru, Otago 9494
Country	:	New Zealand
Responsible	:	Patrick Blampied

Thank you for your purchase.

OUR PROMISE

Our promise is simple...

It works for you (or we will take it back).

For peace of mind we offer a manufacturers warranty on all our products. See our website for more information:

www.tepari.com/owners-hub/warranty

www.tepari.com

NZ

Te Pari Products Ltd

Address:

PO Box 25, Oamaru 9444
9 Endeavour Crescent
Oamaru, 9400

Phone: +64 3 433 0077

Fax: +64 3 434 8859

Sales Email:

sales.nz@tepari.com

Accounts Email:

accounts@tepari.com

Freephone: 0800 837 274

AU

Te Pari Products Pty Ltd

Address:

172 Jersey Drive,
Epping 3076, VIC

Phone: 1800 650 682
or 03 8657 0015

Fax: 1800 669 205

Sales Email:

sales.au@tepari.com

US

Te Pari Products Inc

Address:

14250 Judicial Road
Burnsville, MN 55306

Phone: 800 315 0433

Sales Email:

sales.usa@tepari.com

UK

Te Pari Products (UK) Ltd

Address:

South Inchmichael
Business Park
Errol, PH2 7SP
United Kingdom

Phone: 01738 505 993

Sales Email:

sales.uk@tepari.com

Freephone: 0800 249 4568