

OWNERS OPERATING MANUAL

DONALDS VAN-GARD FM1 WOOLPRESS



Te Pari Products
P O Box 25
Oamaru, New Zealand
Freephone 0800 837 274
Phone +64 3 434 8829
Fax +64 3 434 8859

Introduction

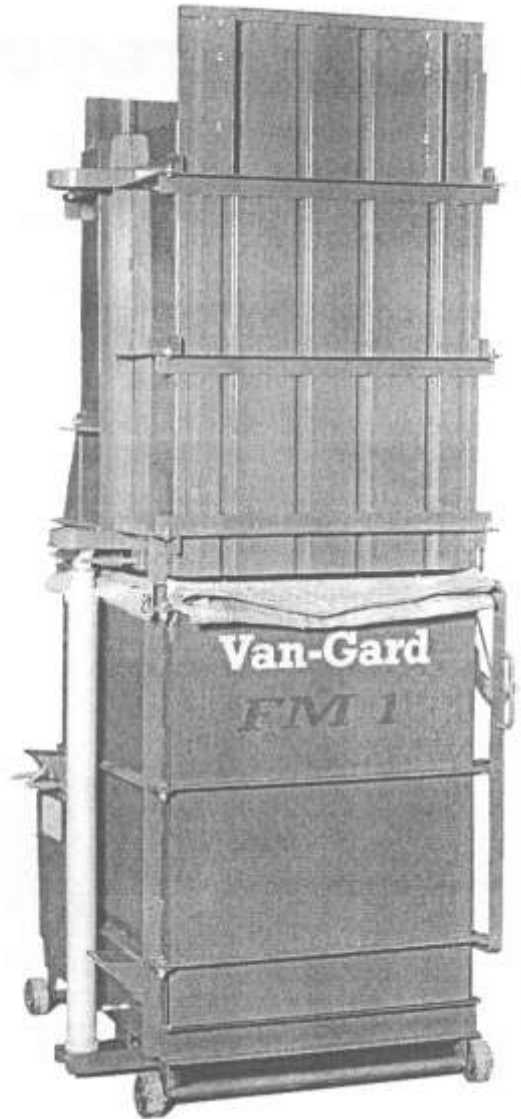
Congratulations on the purchase of your new Donalds *Van-Gard FM1* Woolpress.

We are confident that the investment you have made in this unit will be as wise as it was to the farming forefathers of this land some 80 to 100 years ago.

Your new *Van-Gard FM1* Woolpress has been engineered and manufactured to Te Pari Products' high standard for dependability, ease of operation and operator safety.

Properly cared for, it will give you years of rugged, trouble free performance.

Pay close attention to the Safe Operating Procedures, Warnings and Cautions. If you use your Woolpress properly, and only for what it is intended, you will enjoy years of safe, reliable service.



Thank you again for buying a Donalds Woolpress.

Te Pari Products

Doug, Jeremy, Nick & Patrick Blampied

Contents

Section

- A Parts Diagram
- B Safe Operating Procedures
- C Care & Maintenance
- D Unloading & Installation
- E Warnings & Cautions

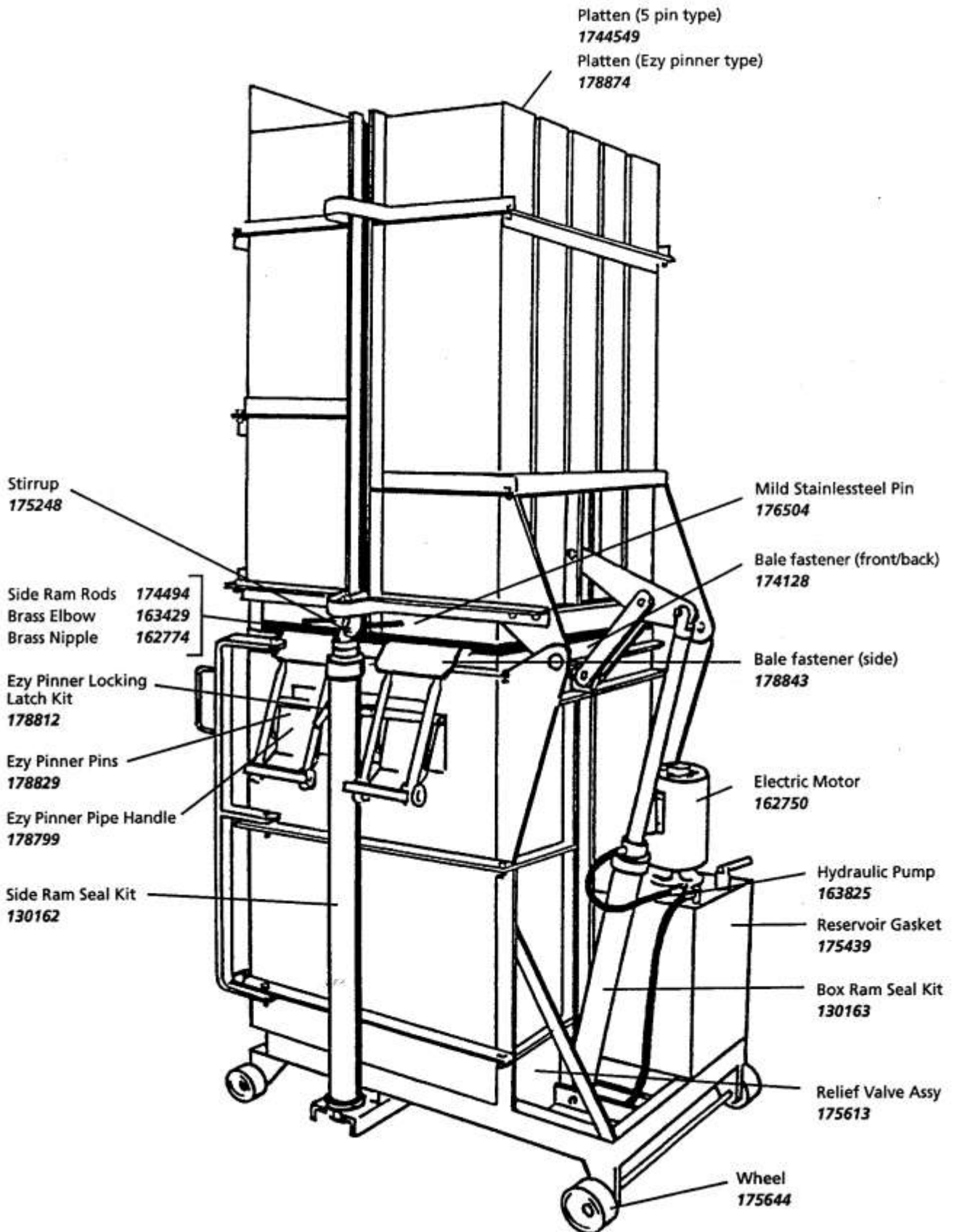


WARNING

Failure to follow these instructions
can result in injury or death.

SAVE THIS MANUAL FOR FUTURE REFERENCE

FM1 Woolpress Parts Diagram



A. Safe Operating Procedures

Preparation

1. Remove unit from pallet and discard packaging.
2. Mount two of the valve levers horizontally.
3. Switch unit on.
4. Check operation of press.
5. Ensure all parts are with the unit.
6. Read Instruction Manual.

Operation

1. Switch unit on.
2. Lower (tip over) top box, install platen and mild steel pins.
3. Install bale pack and clip in bale fasteners.
4. Tramp wool in press and top box.
5. Tip over top box.
6. Raise side rams and connect stirrups to top of platen.
7. Lower rams "pressing operation".
8. Install five stainless steel pins through platen.
9. Tip over top box.
10. Switch machine off.
11. Clip top of pack.
12. Remove stainless steel pins.
13. Remove bale from press.

B. Care & Maintenance

The hydraulic system is completely self lubricating and requires no attention. It does not consume oil and, therefore, it will not be necessary to top up at any time, unless oil is lost by accident.

The maximum oil level is indicated on the tank and it will operate down to about 100mm (4") below this mark. Level can be dipped by removing the filler plug near the front left corner of the tank. It is extremely important that no dirt be allowed to enter the tank and no other parts of the power unit should be removed. Recommended oil is Morris Hydraulic.

All the moving joints of the tip-over mechanism should be greased once a year. This is done by removing the bolt and the bush at each joint in turn and applying chassis grease. The same treatment should be applied to the door and latch hinges and wheels as required.

The ring nuts at the base of each side ram should be screwed down tight (use a hammer and punch in the holes provided) to prevent any looseness in the ram mounting.

IMPORTANT: DO NOT use the same method to tighten either the large or small nut at the **TOP** of each side ram. These nuts are tightened by hand only and tightening them further is not a means of adjustment for the oil seals.

All the oil seals used throughout the press are of the non-adjustable type and should not be touched. In the event of leakage, please advise the factory or your local agent.

When not in use the press should be left with the top box down on the floor, so that the ram piston is retracted to prevent corrosion.

To prevent corrosion inside the top box, all wool grease adhering to the steel should be washed off with hot soapy water at the end of the season, and a light film of oil applied to the steel panels.

C. Warnings & Cautions

1. Keep hands and fingers away from moving parts.
2. Keep children away when operating Woolpress.
3. Never tamper with Woolpress hydraulics or electrical systems. These are factory set. Alterations or modifications would render the warranty void.
4. Always keep calm and use common sense.

D. Unloading & Installation

- Your Woolpress should be dispatched on a pallet.
- Unload and transport with forklift to Woolshed.

Te Pari Products Warranty



Subject to the warranty conditions below, this Donalds Van-Gard FM1 Woolpress (hereinafter called 'the Product') to be free from defects in material or workmanship for a period of 12 months from the date of original purchase covering both parts and labour. Under the terms of this warranty, the repair or replacement of any part shall be the option of the Company. Should service become necessary during the warranty period, the owner should contact Te Pari Products and present the sales docket.

Warranty Conditions

This warranty only applies provided that the Product has been used in accordance with the manufacturer's recommendations under normal use and reasonable care (in the opinion of the Company) and such warranty does not cover damage, malfunction or failure resulting from the misuse, neglect, abuse or used for a purpose for which it was not designed or is not suited; and no repairs, alterations or modifications have been attempted. This guarantee will no longer apply if the machine is damaged by accident or if repairs arise from normal wear and tear.

The Company accepts no additional liability pursuant to this warranty for the costs of travelling or transportation of the Product or parts to and from the service dealer or agent – which costs are not included in this warranty.

Certain legislation, including the Trade Practices Act 1974 (as amended) and other laws give rights to the buyer and impose liability on the seller in certain circumstances. Nothing herein shall have the effect of excluding, restricting or modifying any condition, warranty, right or liability imposed, to the extent only that such exclusion, restriction or modification would render any term herein void.



Te Pari Products - Warranty Reply Card

Donalds Van-Gard FM1 Woolpress



Model: _____

Date of Purchase: _____ Purchased from: _____

Name: _____

Farm or Trading Name: _____

Address: _____

Phone: _____ Mobile: _____

Fax: _____