

OWNERS OPERATING MANUAL

DONALDS HSW MANUAL WOOLPRESS



Te Pari Products
P O Box 25
Oamaru, New Zealand
Freephone 0800 837 274
Phone +64 3 434 8829
Fax +64 3 434 8859

Introduction

Congratulations on the purchase of your new Donalds *HSW Manual Woolpress*.

We are confident that the investment you have made in this unit will be as wise as it was to the farming forefathers of this land some 80 to 100 years ago.

Your new *HSW Manual Woolpress* has been engineered and manufactured to Te Pari Products' high standard for dependability, ease of operation and operator safety.

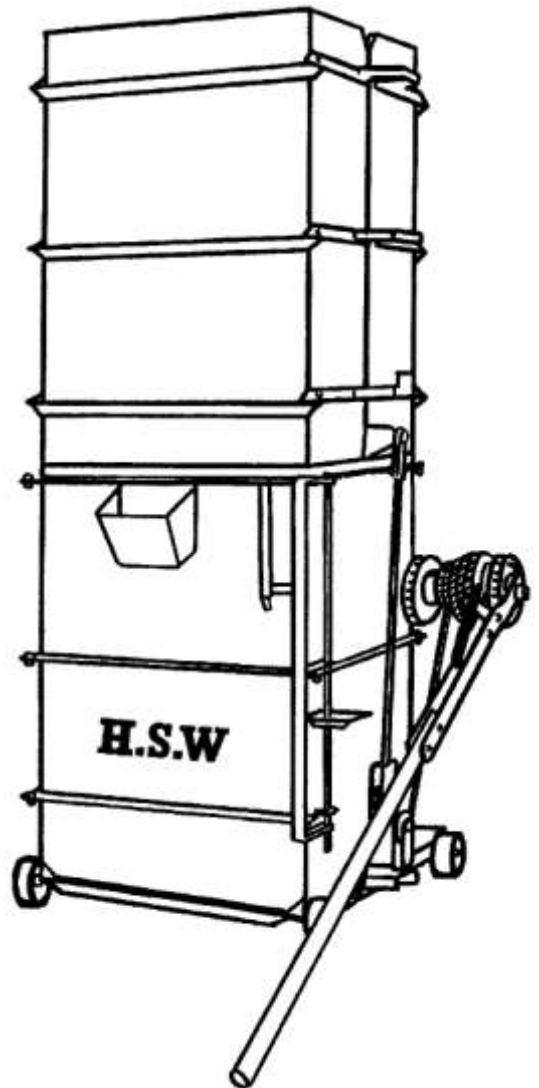
Properly cared for, it will give you years of rugged, trouble free performance.

Pay close attention to the Safe Operating Procedures, Warnings and Cautions. If you use your Woolpress properly, and only for what it is intended, you will enjoy years of safe, reliable service.

Thank you again for buying a Donalds Woolpress.

Te Pari Products

Doug, Jeremy, Nick & Patrick Blampied



Contents

Section

- A Parts Diagram
- B Preparation
- C Safe Operating Procedures
- D Warnings & Cautions
- E Unloading & Installation
- F Maintenance

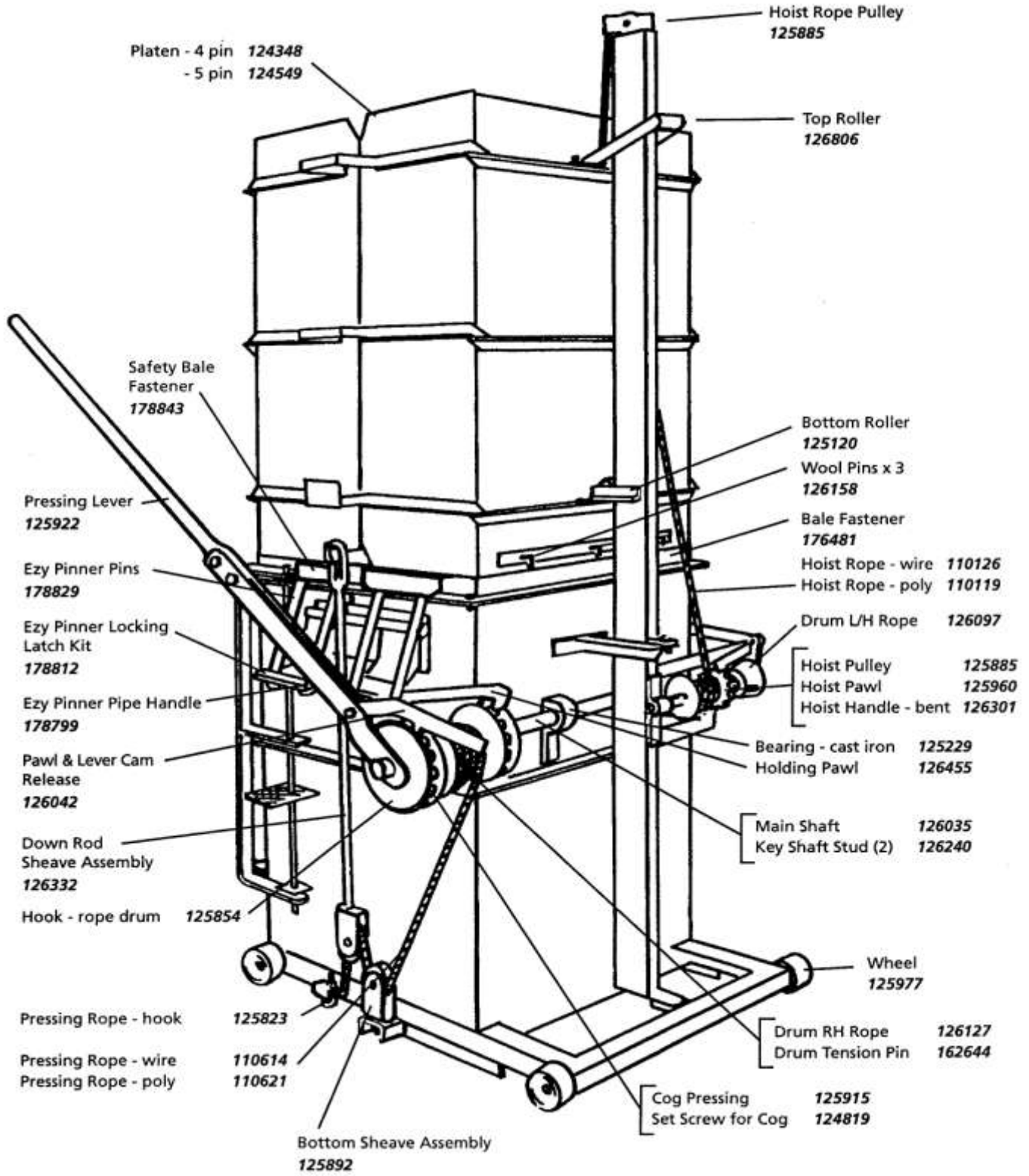


WARNING

Failure to follow these instructions
can result in injury or death.

SAVE THIS MANUAL FOR FUTURE REFERENCE

A. Parts Diagram



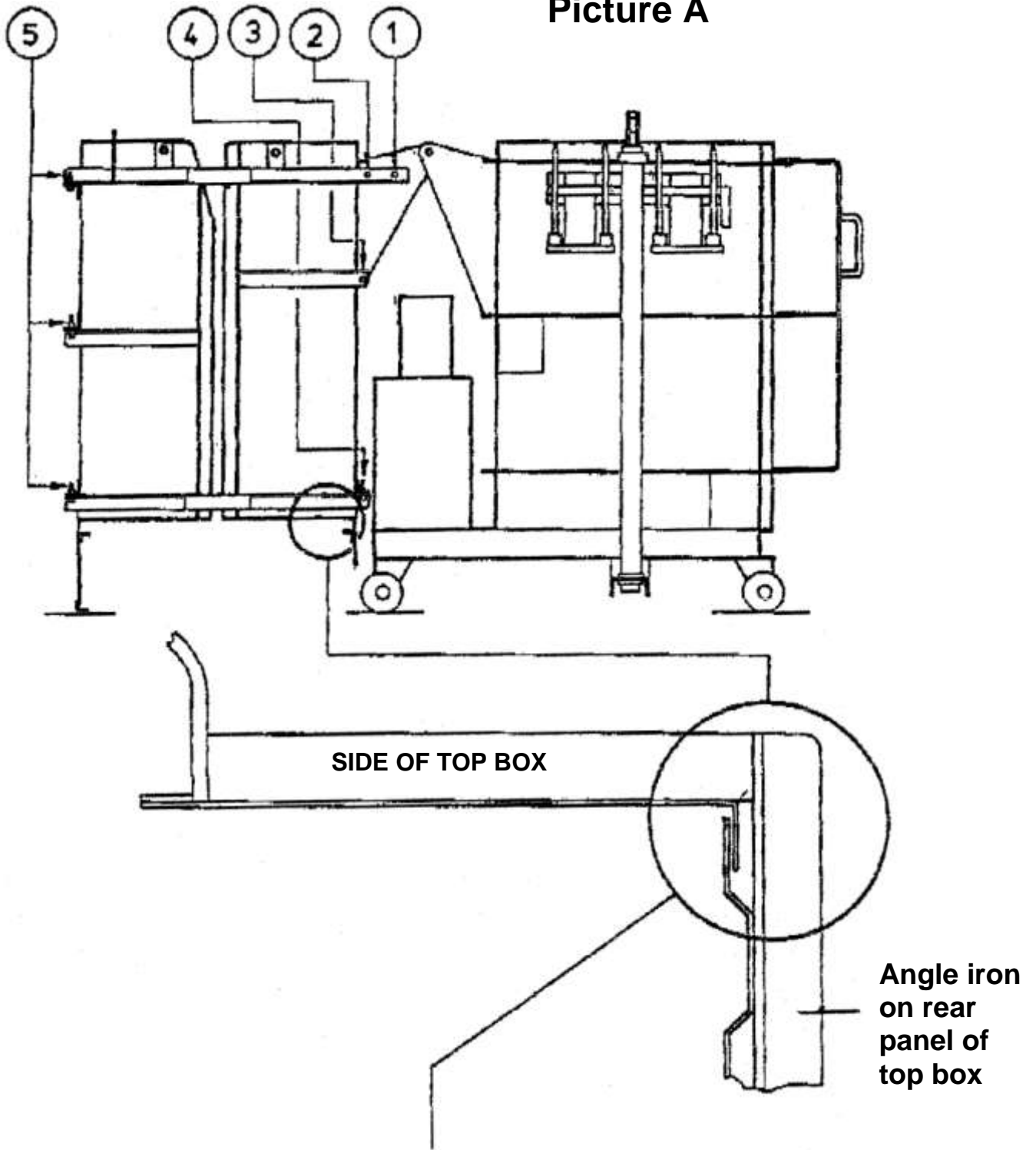
B. Preparation

Preparation

1. Remove unit from pallet and discard packaging.
2. Assemble top box (refer to attached pic. A)
 - a. When assembling top box, please ensure side panel interlocks as shown. It may be advisable to use a screw driver to prize open the gap between panel steel and angle iron on back panel.
 - b. Position bolts *1 – 4 sequence*, using a screw driver or similar to first locate holes. Fit *both side panels* before attempting to fit last panel and bolts numbered 5.
3. Place top box behind bottom and bolt on the top roller bracket around the pole.
4. Attach polyflex hoist rope by threading plain end through hold in Barrel Flange and tying knot. Turn barrel to take up slack, there should be 1½ - 2 turns on barrel before top box lifts.
5. Wind up to box and swing around onto bottom box. Loosen roller bracket and position top box square on bottom box. Place ¼" spacer on top of floor between boxes to reduce sag. Adjust rollers to fit pole and tighten nuts.
6. To attach lever remove cog. Then put level and cog on the spindle together and tighten set screw.
7. Check operation of assembled press.
8. Read Instruction manual.

Top Box Assembly

Picture A



C. Safe Operating Procedures

Operation

1. Lower top box to floor.
2. Place two mild steel wool pins in top box and fill both boxes with wool.
3. Place platen (cap) on top of top box.
4. Wind up top box and swing into position.
5. PULL OUT PINS
6. Attach down rods and rope and press.

Caution: This press is designed for one person operation, overpressing may result in permanent damage.

7. Install 5 x stainless steel pins through woolpack.
8. Lift and swing top box out of the way.
9. Clip top of pack.
10. Remove stainless steel pins
11. Remove bale from press.

D. Warnings & Cautions

1. Keep hands and fingers away from moving parts.
2. Keep children away when operating Woolpress.
3. Never tamper with any Woolpress systems. Alterations or modifications would render the warranty void.
4. Always keep calm and use common sense.

E. Unloading & Installation

- Your Woolpress should be dispatched on a pallet.
- Unload and transport with forklift to Woolshed.

F. Maintenance

Your HSW Manual Woolpress requires very little maintenance, however the following points are important:

1. Keep all moving parts well oiled or greased including:
 - Bearings on Main Shaft (fig. A)
 - Rope Pulleys (fig. B)
2. Check that the rope drums do not have any sharp edges and that the tension pins are tight on the shaft.
3. Check hoist brake is adjusted correctly. Raise the top box a short distance from ground level and while holding it in this position, tighten the tension adjustment nut that protrudes from the hoist brake until the box remains in the raised position.

Troubleshooting

- To centralise Pressing rope:

To centralise pressing rope, loosen 'J' bolts and release excess rope, then pull both down rod shafts out in front of the press and check that rope lengths are equal. Once equal, retighten 'J' bolts. Check plastic sleeves are clamped by 'J' bolt.

- Platen creeps up:

If problem with creeping up, check shaft studs and grub screws on pressing cogs (Part No. 126240)

Figure B

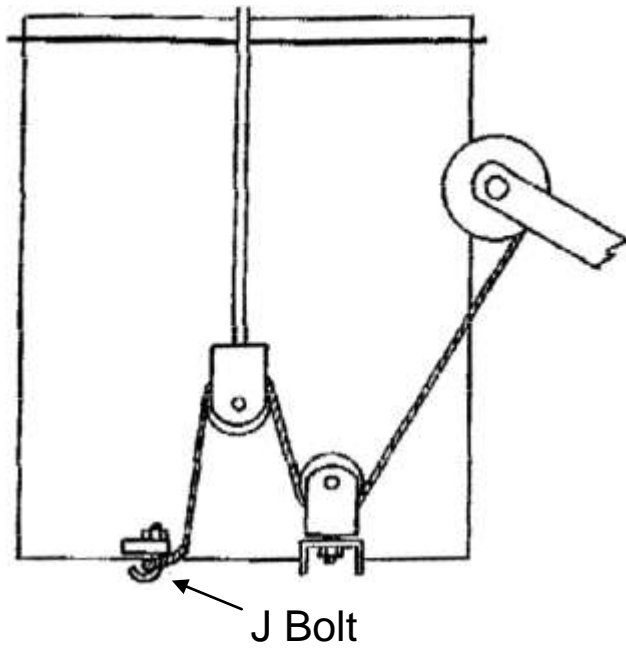


Figure A

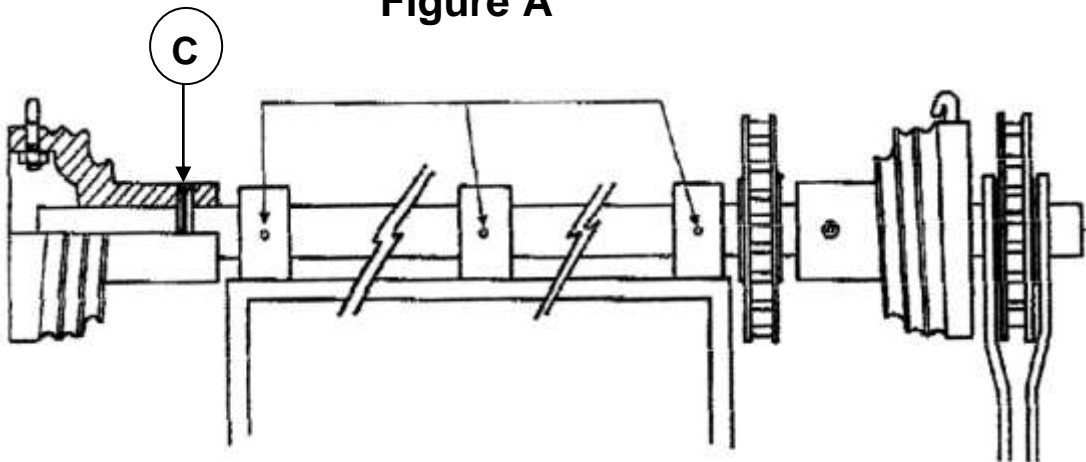
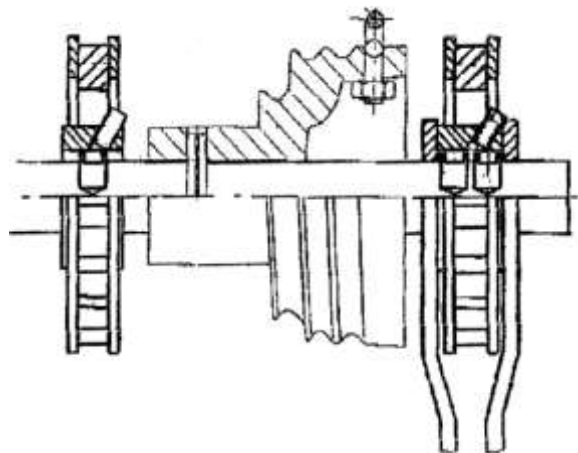


Figure D



Te Pari Products Warranty



Subject to the warranty conditions below, this Donalds HSW Manual Woolpress (hereinafter called "the Product") to be free from defects in material or workmanship for a period of 12 months from the date of original purchase covering both parts and labour. Under the terms of this warranty, the repair or replacement of any part shall be the option of the Company. Should service become necessary during the warranty period, the owner should contact Te Pari Products and present the sales docket.

Warranty Conditions

This warranty only applies provided that the Product has been used in accordance with the manufacturer's recommendations under normal use and reasonable care (in the opinion of the Company) and such warranty does not cover damage, malfunction or failure resulting from the misuse, neglect, abuse or used for a purpose for which it was not designed or is not suited; and no repairs, alterations or modifications have been attempted. This guarantee will no longer apply if the machine is damaged by accident or if repairs arise from normal wear and tear.

The Company accepts no additional liability pursuant to this warranty for the costs of travelling or transportation of the Product or parts to and from the service dealer or agent – which costs are not included in this warranty.

Certain legislation, including the Trade Practices Act 1974 (as amended) and other laws give rights to the buyer and impose liability on the seller in certain circumstances. Nothing herein shall have the effect of excluding, restricting or modifying any condition, warranty, right or liability imposed, to the extent only that such exclusion, restriction or modification would render any term herein void.



Te Pari Products - Warranty Reply Card

Donalds HSW Manual Woolpress



Model: _____

Date of Purchase: _____ Purchased from: _____

Name: _____

Farm or Trading Name: _____

Address: _____

Phone: _____ Mobile: _____

Fax: _____