

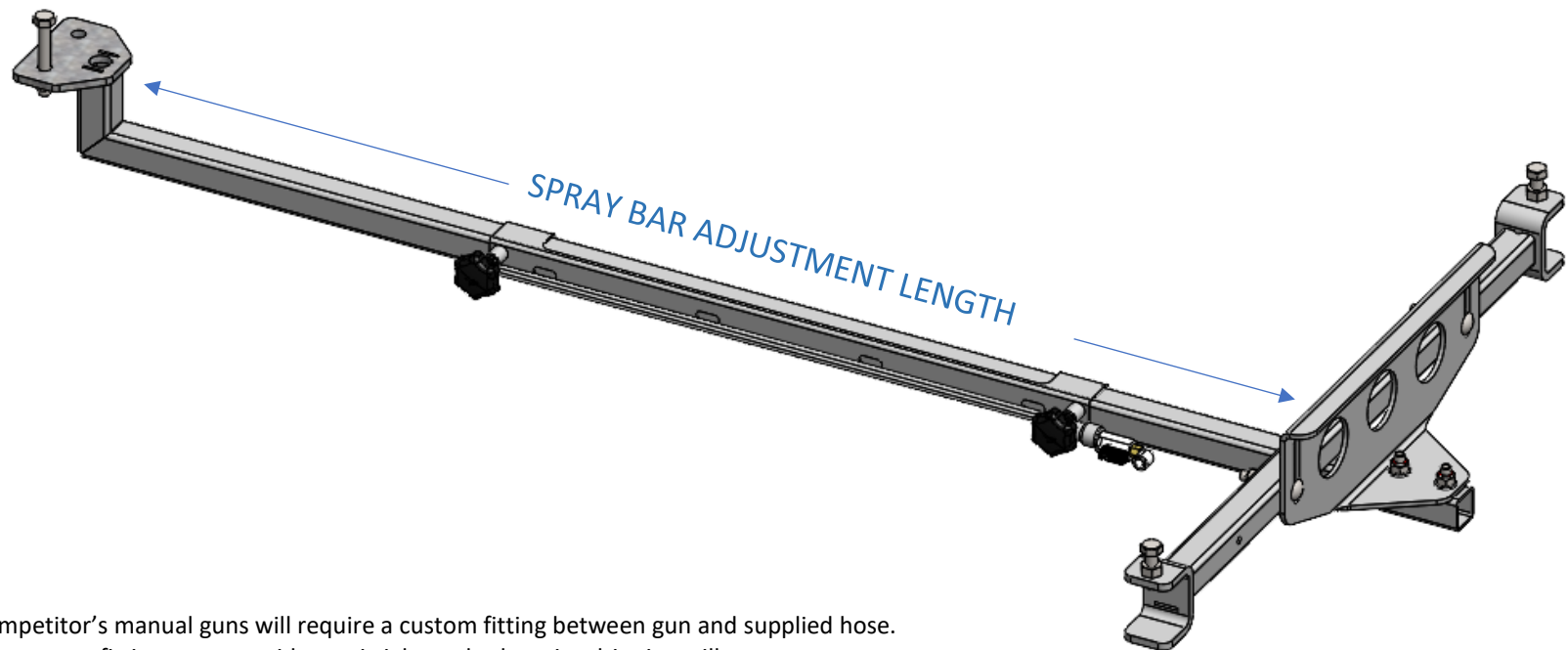
# QUIKDOSE BACKLINE SYSTEM

## Congratulations on purchasing the Quikdose Backline System!

The system is designed to assist farmers to dose cattle safely and efficiently. The kit contains a fixed frame with a sliding spray bar + fittings. Undoing the two clamping screws quickly adjusts the spray bar to the desired dosing position when in operation.

The unit can be assembled to be used for left- and right-hand operation to suit current operational needs.

The system fits all current Te Pari model crushes and is primarily designed to be used with the Te Pari Revolution Dosing Gun. Competitors manual drench guns can be used with the system\*



\* Competitor's manual guns will require a custom fitting between gun and supplied hose. Any custom fitting must provide an airtight seal otherwise dripping will occur.

### TE PARI PRODUCTS [www.tepari.com](http://www.tepari.com)

#### NEW ZEALAND

PO Box 25, 9 Endeavour Crescent, Oamaru, 9400  
**Phone** 03 433 0077  
**Email** [sales@tepari.com](mailto:sales@tepari.com)  
**FREEPHONE** 0800 837 274

#### AUSTRALIA

172 Jersey Drive, Epping, VIC, 3076  
**Phone** 03 8657 0015  
**Email** [sales.au@tepari.com](mailto:sales.au@tepari.com)  
**Freephone** 1800 650 682

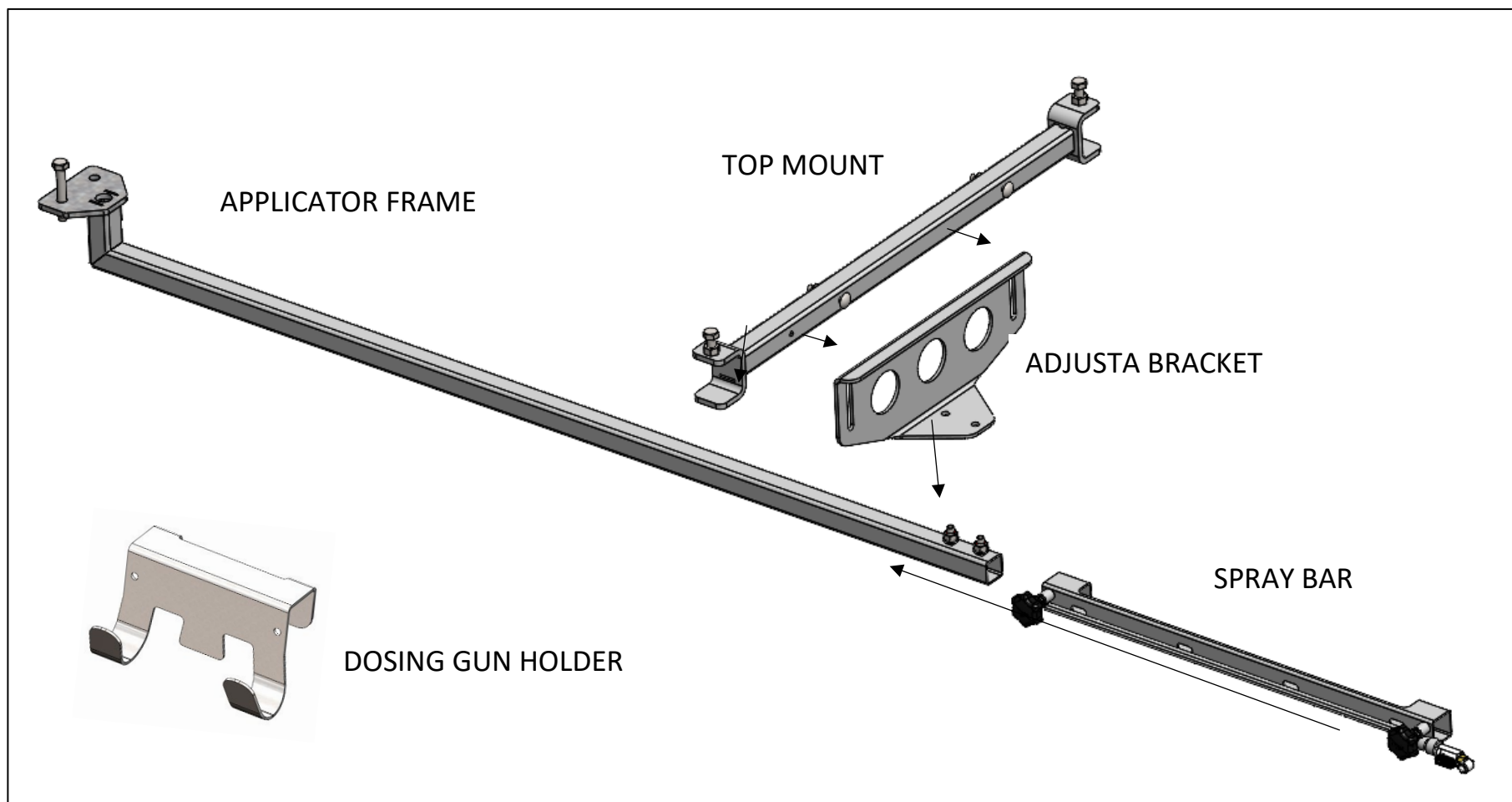
#### UNITED STATES

14250 Judicial Road, Burnsville MN 55306  
**Phone** 952 209 7255  
**Email** [sales.usa@tepari.com](mailto:sales.usa@tepari.com)  
**Freephone** 800 315 0433

#### UNITED KINGDOM

South Inchmichael Business Park, Errol, PH2 7SP  
**Phone** 01738 505 993  
**Email** [sales.uk@tepari.com](mailto:sales.uk@tepari.com)  
**Freephone** 0800 249 4568

## MAIN COMPONENTS (EXPLODED)



### TE PARI PRODUCTS [www.tepari.com](http://www.tepari.com)

#### NEW ZEALAND

PO Box 25, 9 Endeavour Crescent, Oamaru, 9400  
**Phone** 03 433 0077  
**Email** [sales@tepari.com](mailto:sales@tepari.com)  
**FREEPHONE** 0800 837 274

#### AUSTRALIA

172 Jersey Drive, Epping, VIC, 3076  
**Phone** 03 8657 0015  
**Email** [sales.au@tepari.com](mailto:sales.au@tepari.com)  
**Freephone** 1800 650 682

#### UNITED STATES

14250 Judicial Road, Burnsville MN 55306  
**Phone** 952 209 7255  
**Email** [sales.usa@tepari.com](mailto:sales.usa@tepari.com)  
**Freephone** 800 315 0433

#### UNITED KINGDOM

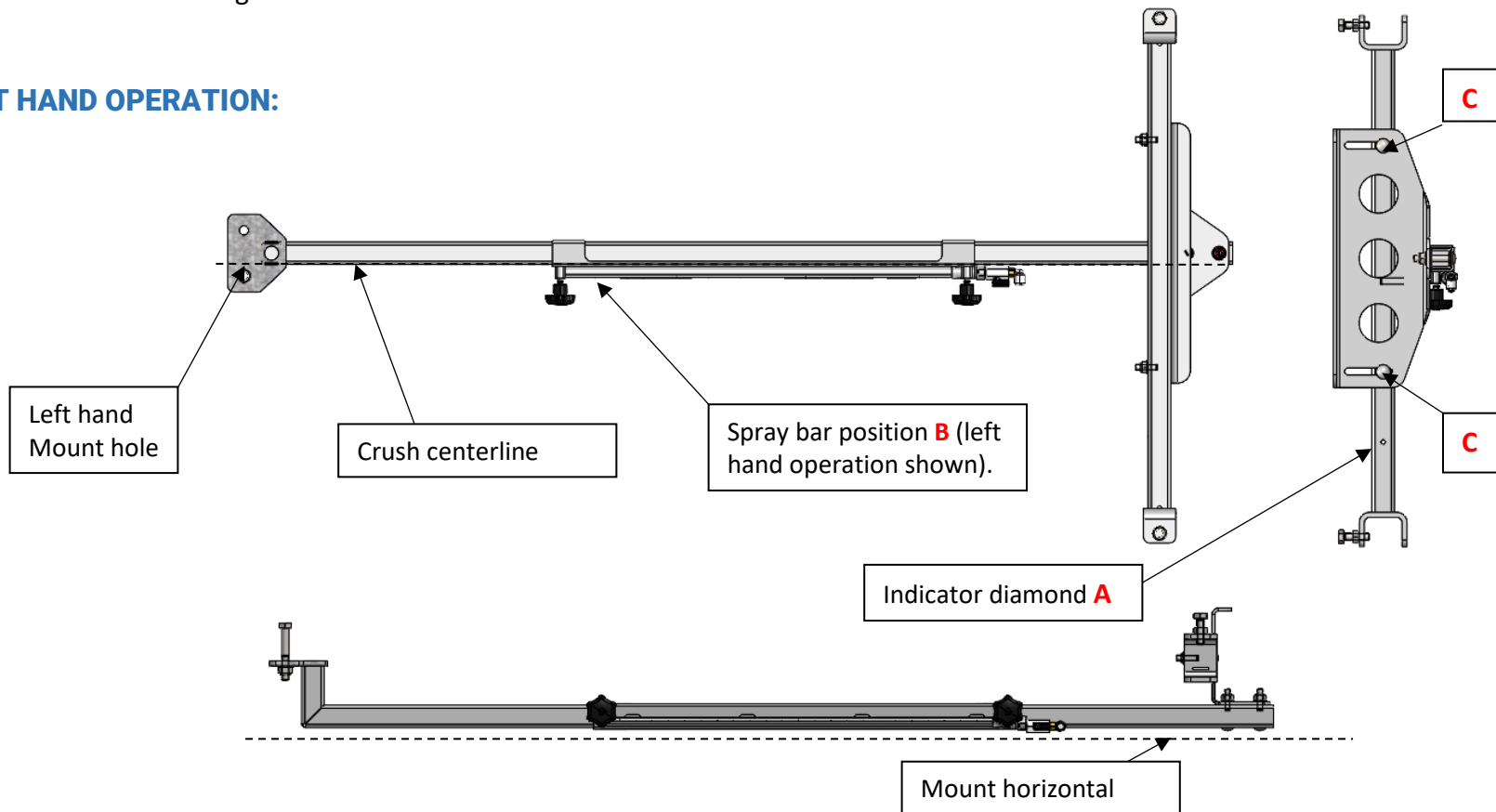
South Inchmichael Business Park, Errol, PH2 7SP  
**Phone** 01738 505 993  
**Email** [sales.uk@tepari.com](mailto:sales.uk@tepari.com)  
**Freephone** 0800 249 4568

## PREASSEMBLY

The below instructions help ensure proper set up:

- Determine what side you wish to set up the spray bar.
- Regardless of right or left-hand operation the system is designed to spray along the centre of the animal. To assist this, ensure that the indicator diamond on the top mount (A) is on the same side that the spray bar (B) when assembling. Below shows a left-hand operation. For right hand operation mount the spray bar and indicator diamond on the opposing side.
- To prevent dripping the bar must be set up horizontal. Adjust the elevation by moving bolts in slots (C). A spirit level is ideal to set the desired angle.

### LEFT HAND OPERATION:



#### TE PARI PRODUCTS [www.tepari.com](http://www.tepari.com)

##### NEW ZEALAND

PO Box 25, 9 Endeavour Crescent, Oamaru, 9400  
**Phone** 03 433 0077  
**Email** [sales@tepari.com](mailto:sales@tepari.com)  
**FREEPHONE** 0800 837 274

##### AUSTRALIA

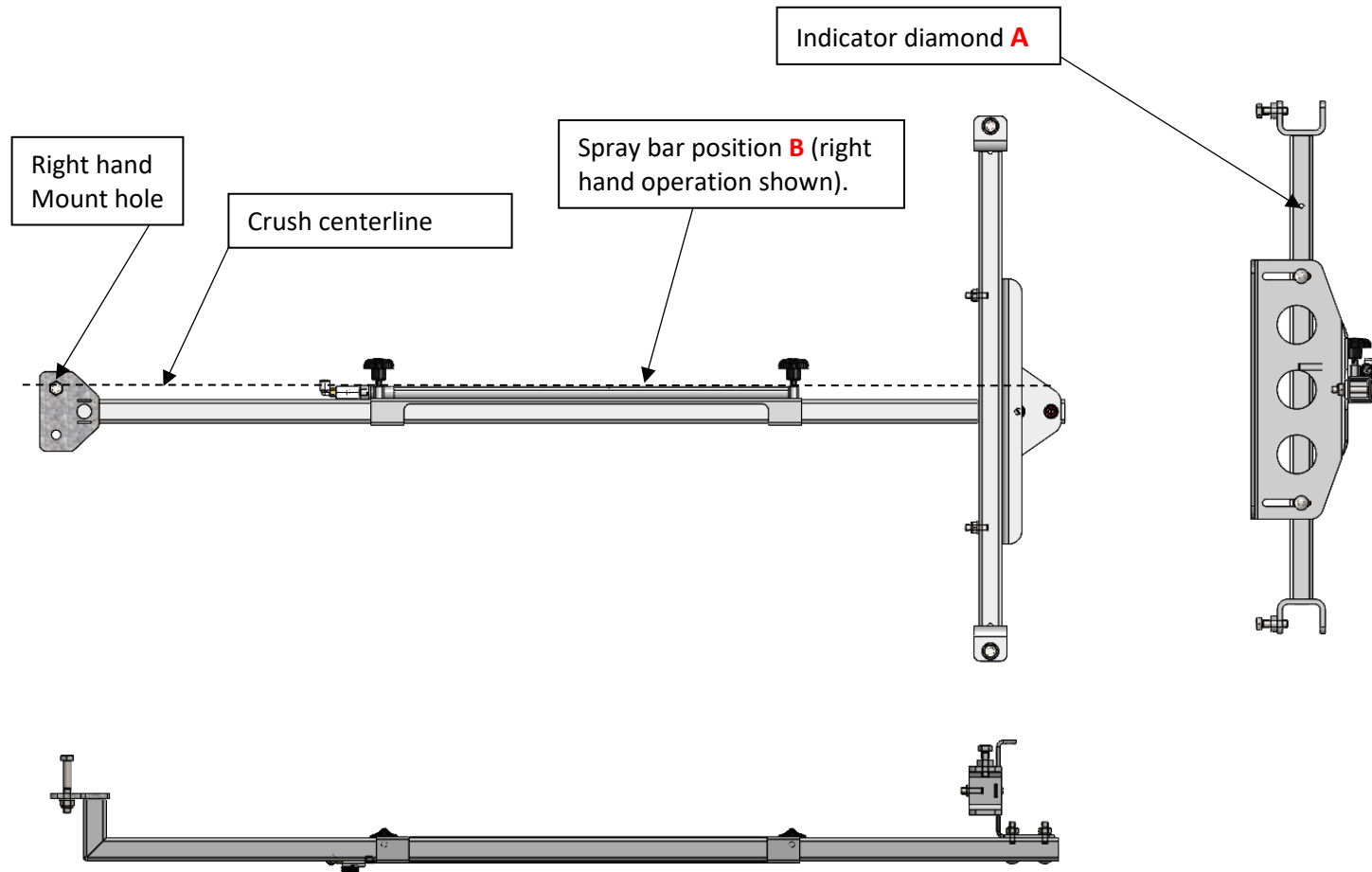
172 Jersey Drive, Epping, VIC, 3076  
**Phone** 03 8657 0015  
**Email** [sales.au@tepari.com](mailto:sales.au@tepari.com)  
**Freephone** 1800 650 682

##### UNITED STATES

14250 Judicial Road, Burnsville MN 55306  
**Phone** 952 209 7255  
**Email** [sales.usa@tepari.com](mailto:sales.usa@tepari.com)  
**Freephone** 800 315 0433

##### UNITED KINGDOM

South Inchmichael Business Park, Errol, PH2 7SP  
**Phone** 01738 505 993  
**Email** [sales.uk@tepari.com](mailto:sales.uk@tepari.com)  
**Freephone** 0800 249 4568

**RIGHT HAND OPERATION:****TE PARI PRODUCTS** [www.tepari.com](http://www.tepari.com)**NEW ZEALAND**

PO Box 25, 9 Endeavour Crescent, Oamaru, 9400

**Phone** 03 433 0077**Email** [sales@tepari.com](mailto:sales@tepari.com)**FREEPHONE** 0800 837 274**AUSTRALIA**

172 Jersey Drive, Epping, VIC, 3076

**Phone** 03 8657 0015**Email** [sales.au@tepari.com](mailto:sales.au@tepari.com)**Freephone** 1800 650 682**UNITED STATES**

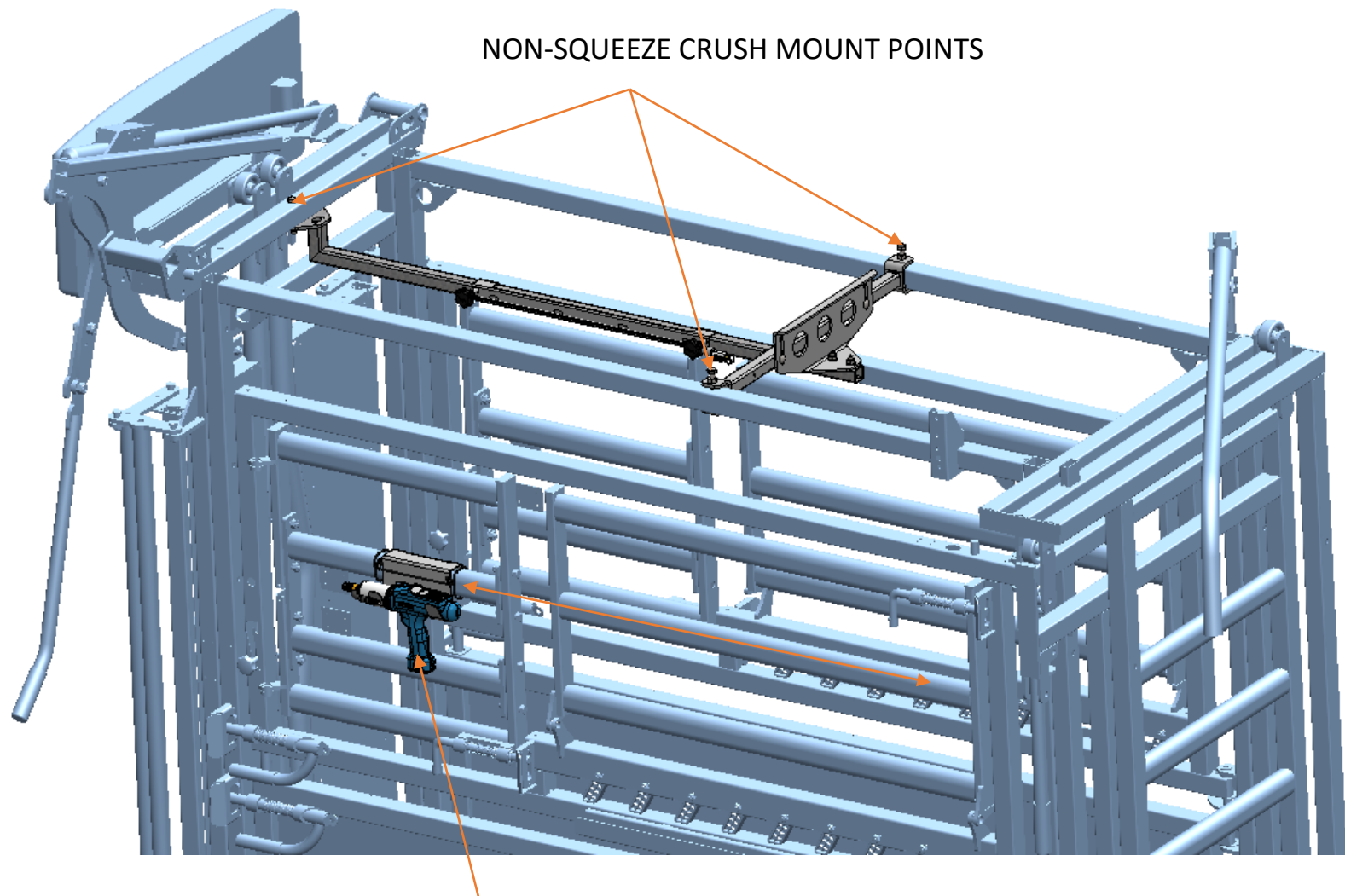
14250 Judicial Road, Burnsville MN 55306

**Phone** 952 209 7255**Email** [sales.usa@tepari.com](mailto:sales.usa@tepari.com)**Freephone** 800 315 0433**UNITED KINGDOM**

South Inchmichael Business Park, Errol, PH2 7SP

**Phone** 01738 505 993**Email** [sales.uk@tepari.com](mailto:sales.uk@tepari.com)**Freephone** 0800 249 4568

## NON - SQUEEZE CRUSH MOUNTING



NON-SQUEEZE CRUSH MOUNT POINTS

ATTACH GUN MOUNT, WHERE DESIRED, FOR EASE OF OPERATION

### TE PARI PRODUCTS [www.tepari.com](http://www.tepari.com)

#### NEW ZEALAND

PO Box 25, 9 Endeavour Crescent, Oamaru, 9400  
**Phone** 03 433 0077  
**Email** [sales@tepari.com](mailto:sales@tepari.com)  
**FREEPHONE** 0800 837 274

#### AUSTRALIA

172 Jersey Drive, Epping, VIC, 3076  
**Phone** 03 8657 0015  
**Email** [sales.au@tepari.com](mailto:sales.au@tepari.com)  
**Freephone** 1800 650 682

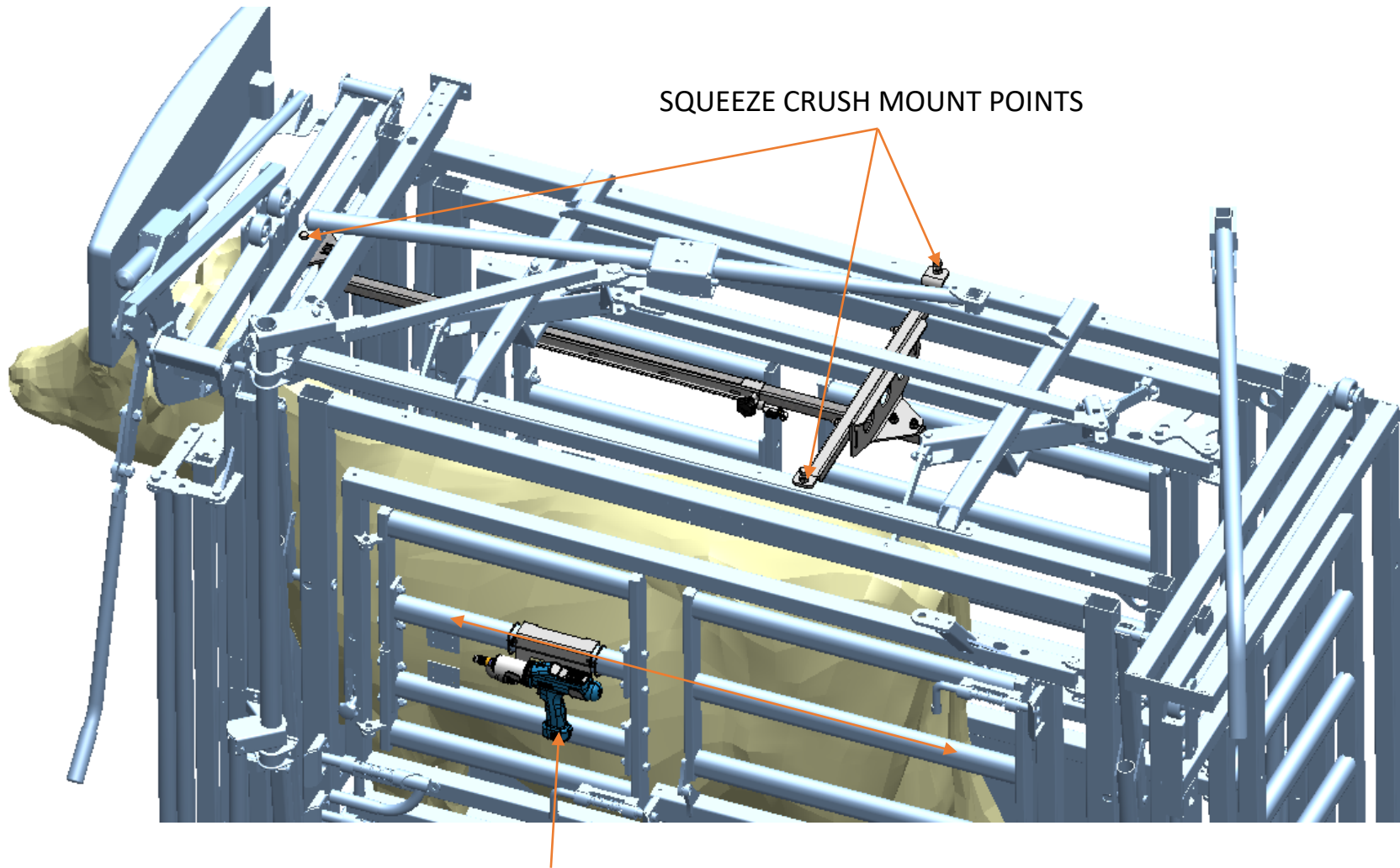
#### UNITED STATES

14250 Judicial Road, Burnsville MN 55306  
**Phone** 952 209 7255  
**Email** [sales.usa@tepari.com](mailto:sales.usa@tepari.com)  
**Freephone** 800 315 0433

#### UNITED KINGDOM

South Inchmichael Business Park, Errol, PH2 7SP  
**Phone** 01738 505 993  
**Email** [sales.uk@tepari.com](mailto:sales.uk@tepari.com)  
**Freephone** 0800 249 4568

## SQUEEZE CRUSH MOUNTING



ATTACH GUN MOUNT, WHERE DESIRED, FOR EASE OF OPERATION

### TE PARI PRODUCTS [www.tepari.com](http://www.tepari.com)

#### NEW ZEALAND

PO Box 25, 9 Endeavour Crescent, Oamaru, 9400  
**Phone** 03 433 0077  
**Email** [sales@tepari.com](mailto:sales@tepari.com)  
**FREEPHONE** 0800 837 274

#### AUSTRALIA

172 Jersey Drive, Epping, VIC, 3076  
**Phone** 03 8657 0015  
**Email** [sales.au@tepari.com](mailto:sales.au@tepari.com)  
**Freephone** 1800 650 682

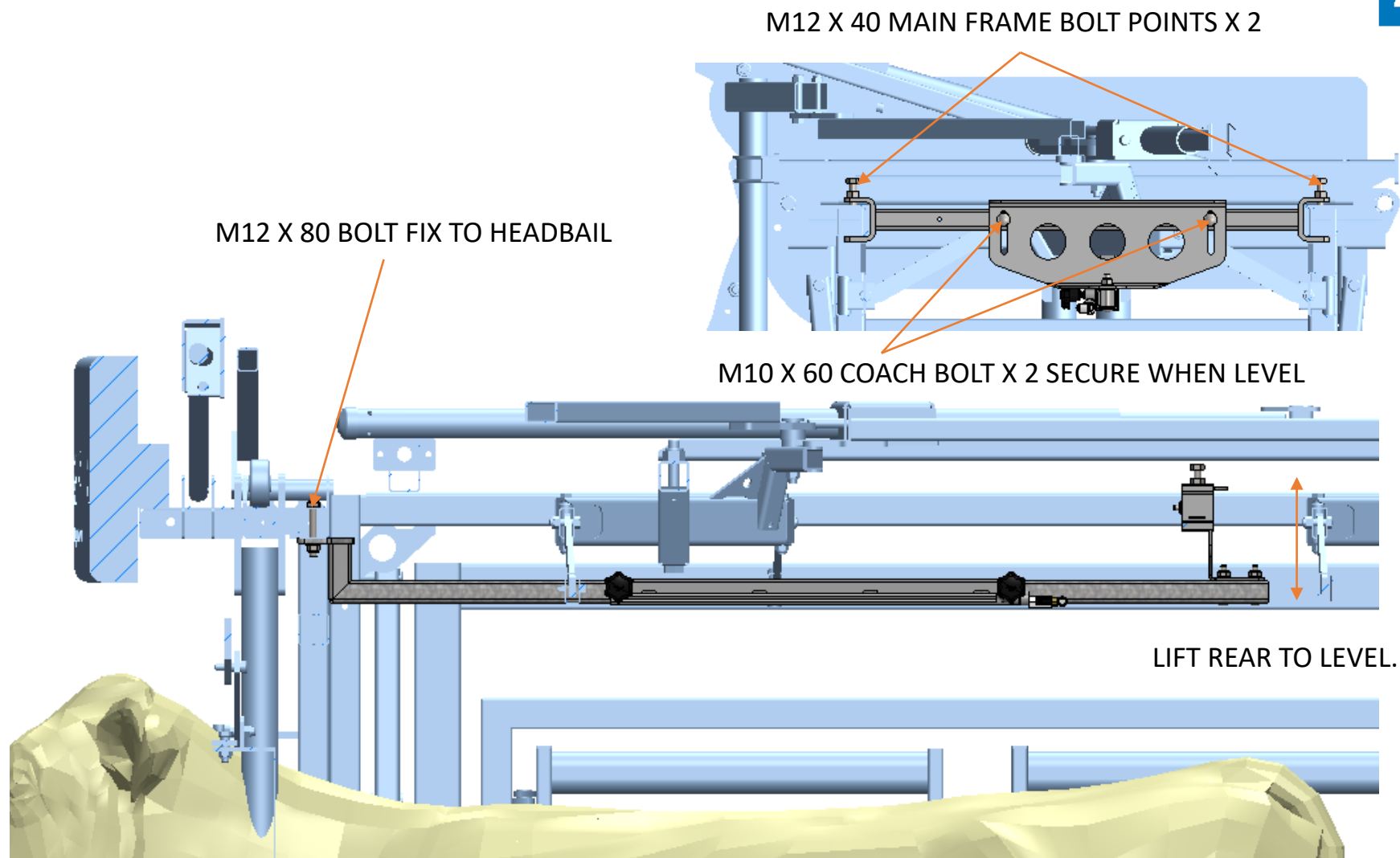
#### UNITED STATES

14250 Judicial Road, Burnsville MN 55306  
**Phone** 952 209 7255  
**Email** [sales.usa@tepari.com](mailto:sales.usa@tepari.com)  
**Freephone** 800 315 0433

#### UNITED KINGDOM

South Inchmichael Business Park, Errol, PH2 7SP  
**Phone** 01738 505 993  
**Email** [sales.uk@tepari.com](mailto:sales.uk@tepari.com)  
**Freephone** 0800 249 4568





**TE PARI PRODUCTS** [www.tepari.com](http://www.tepari.com)

**NEW ZEALAND**

PO Box 25, 9 Endeavour Crescent, Oamaru, 9400  
**Phone** 03 433 0077  
**Email** sales@tepari.com  
**FREEPHONE** 0800 837 274

**AUSTRALIA**

172 Jersey Drive, Epping, VIC, 3076  
**Phone** 03 8657 0015  
**Email** sales.au@tepari.com  
**Freephone** 1800 650 682

**UNITED STATES**

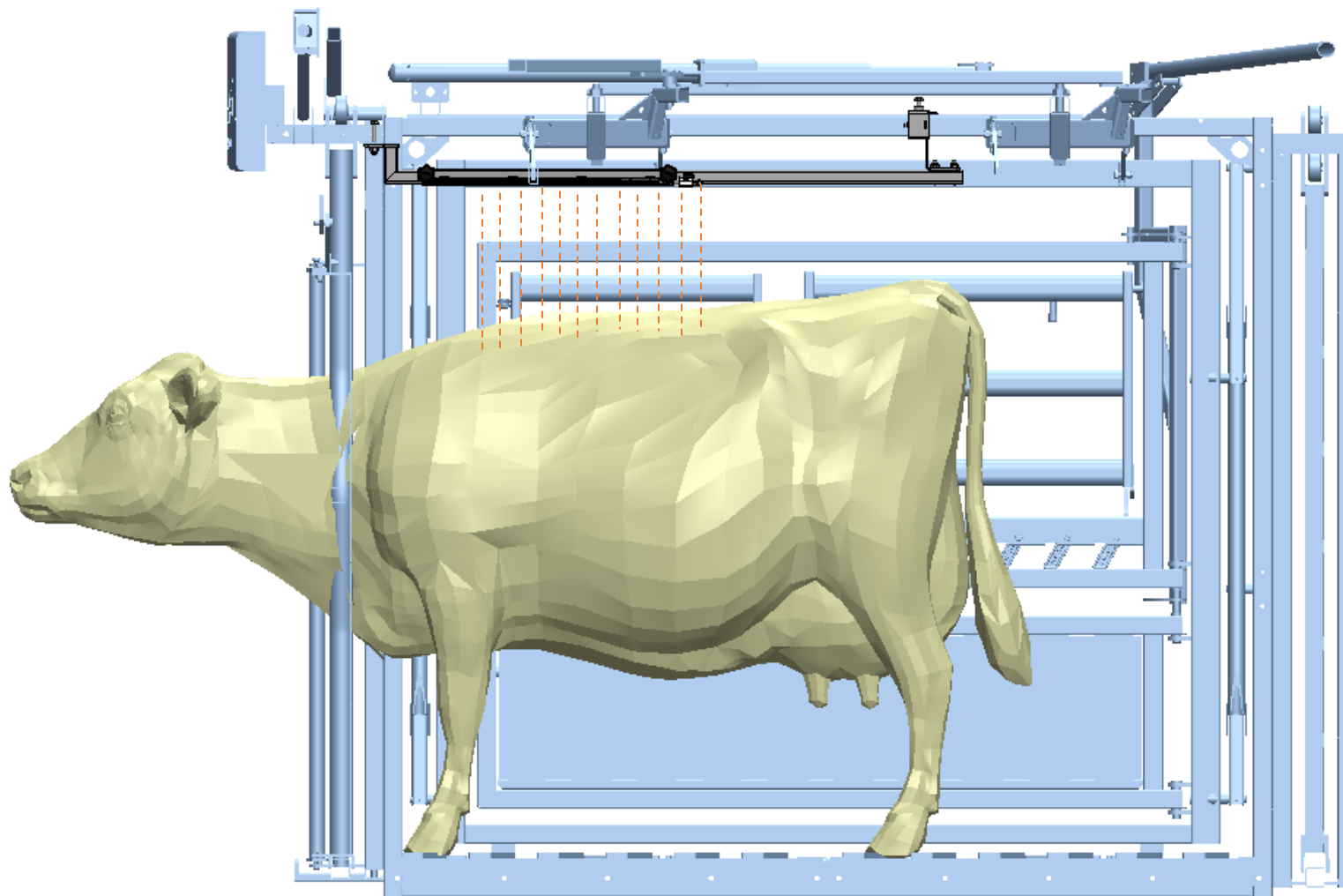
14250 Judicial Road, Burnsville MN 55306  
**Phone** 952 209 7255  
**Email** sales.usa@tepari.com  
**Freephone** 800 315 0433

**UNITED KINGDOM**

South Inchmichael Business Park, Errol, PH2 7SP  
**Phone** 01738 505 993  
**Email** sales.uk@tepari.com  
**Freephone** 0800 249 4568

## MOVE SPRAY BAR TO SUIT APPLICATION.

Animal shown in forward head bailed position.



### **TE PARI PRODUCTS** [www.tepari.com](http://www.tepari.com)

#### **NEW ZEALAND**

PO Box 25, 9 Endeavour Crescent, Oamaru, 9400

**Phone** 03 433 0077

**Email** [sales@tepari.com](mailto:sales@tepari.com)

**FREEPHONE** 0800 837 274

#### **AUSTRALIA**

172 Jersey Drive, Epping, VIC, 3076

**Phone** 03 8657 0015

**Email** [sales.au@tepari.com](mailto:sales.au@tepari.com)

**Freephone** 1800 650 682

#### **UNITED STATES**

14250 Judicial Road, Burnsville MN 55306

**Phone** 952 209 7255

**Email** [sales.usa@tepari.com](mailto:sales.usa@tepari.com)

**Freephone** 800 315 0433

#### **UNITED KINGDOM**

South Inchmichael Business Park, Errol, PH2 7SP

**Phone** 01738 505 993

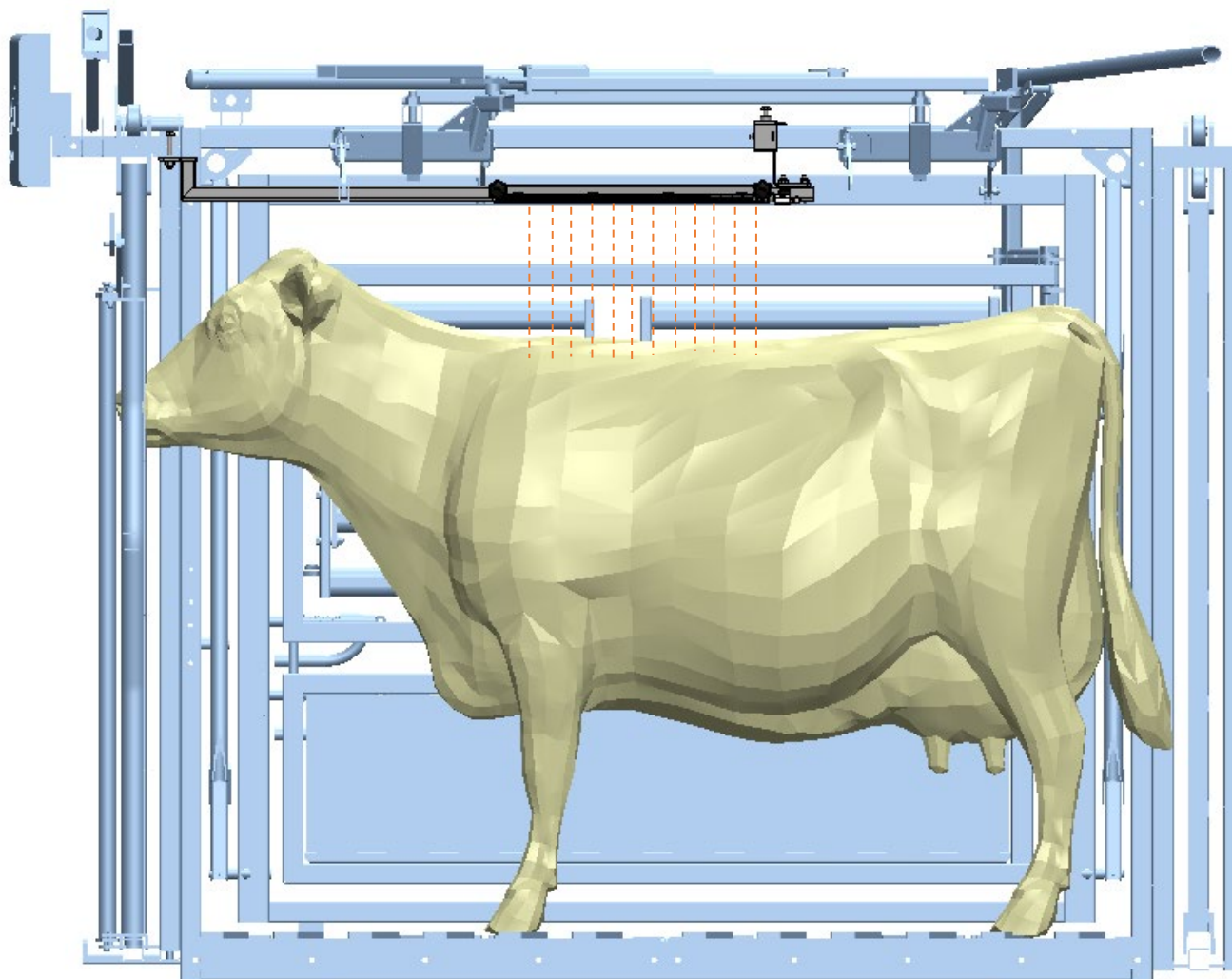
**Email** [sales.uk@tepari.com](mailto:sales.uk@tepari.com)

**Freephone** 0800 249 4568



## MOVE SPRAY BAR TO SUIT APPLICATION.

Animal shown in rearward position.



### **TE PARI PRODUCTS** [www.tepari.com](http://www.tepari.com)

#### **NEW ZEALAND**

PO Box 25, 9 Endeavour Crescent, Oamaru, 9400  
**Phone** 03 433 0077  
**Email** [sales@tepari.com](mailto:sales@tepari.com)  
**FREEPHONE** 0800 837 274

#### **AUSTRALIA**

172 Jersey Drive, Epping, VIC, 3076  
**Phone** 03 8657 0015  
**Email** [sales.au@tepari.com](mailto:sales.au@tepari.com)  
**Freephone** 1800 650 682

#### **UNITED STATES**

14250 Judicial Road, Burnsville MN 55306  
**Phone** 952 209 7255  
**Email** [sales.usa@tepari.com](mailto:sales.usa@tepari.com)  
**Freephone** 800 315 0433

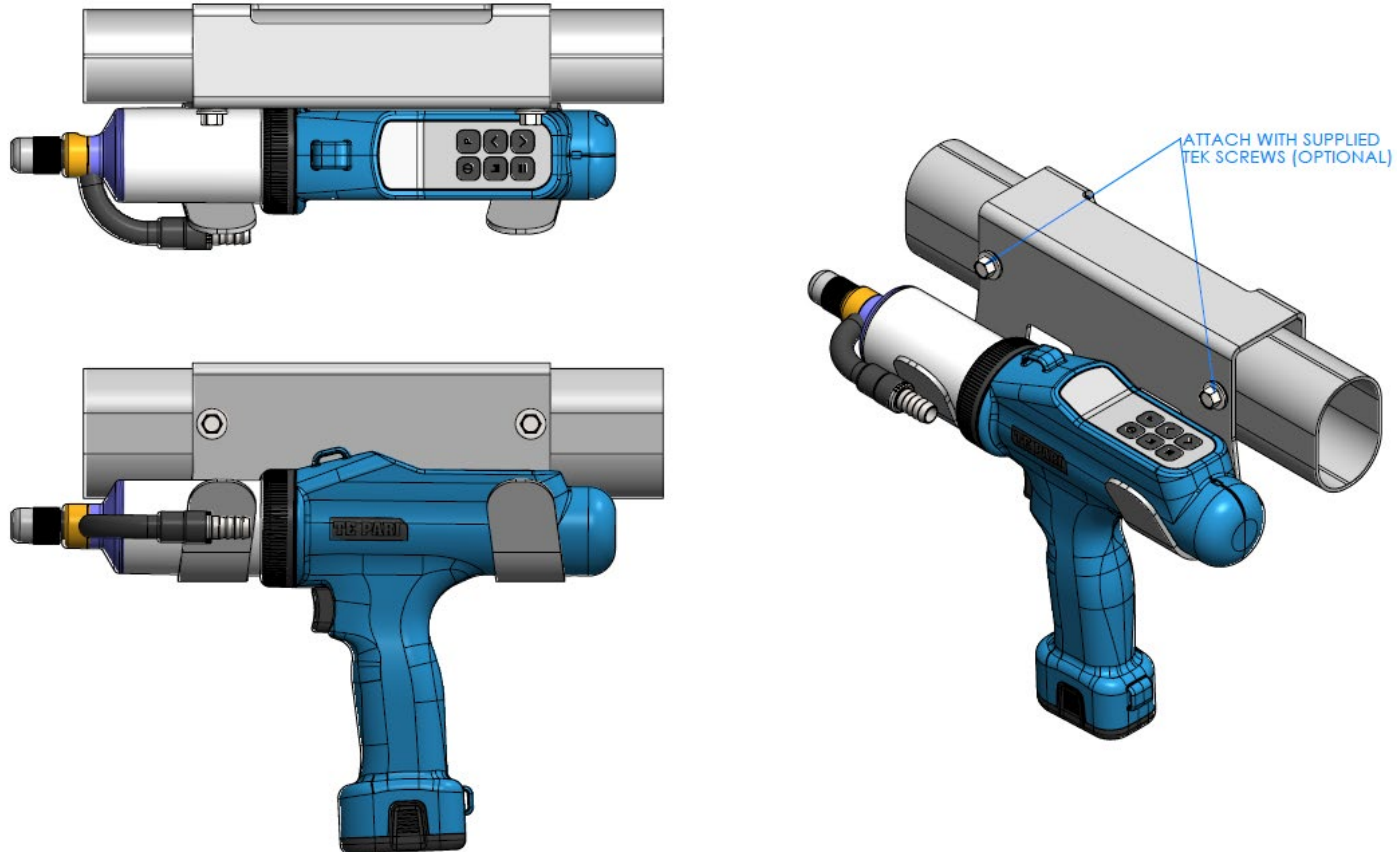
#### **UNITED KINGDOM**

South Inchmichael Business Park, Errol, PH2 7SP  
**Phone** 01738 505 993  
**Email** [sales.uk@tepari.com](mailto:sales.uk@tepari.com)  
**Freephone** 0800 249 4568

# REVOLUTION GUN MOUNT

Fit mount over any gate cattle rail at a height and/or desired position for convenient operation.

The mount can be secured by the two self-drilling screws supplied. This provides additional mount security but is optional.



## TE PARI PRODUCTS [www.tepari.com](http://www.tepari.com)

### NEW ZEALAND

PO Box 25, 9 Endeavour Crescent, Oamaru, 9400

**Phone** 03 433 0077

**Email** [sales@tepari.com](mailto:sales@tepari.com)

**FREEPHONE** 0800 837 274

### AUSTRALIA

172 Jersey Drive, Epping, VIC, 3076

**Phone** 03 8657 0015

**Email** [sales.au@tepari.com](mailto:sales.au@tepari.com)

**Freephone** 1800 650 682

### UNITED STATES

14250 Judicial Road, Burnsville MN 55306

**Phone** 952 209 7255

**Email** [sales.usa@tepari.com](mailto:sales.usa@tepari.com)

**Freephone** 800 315 0433

### UNITED KINGDOM

South Inchmichael Business Park, Errol, PH2 7SP

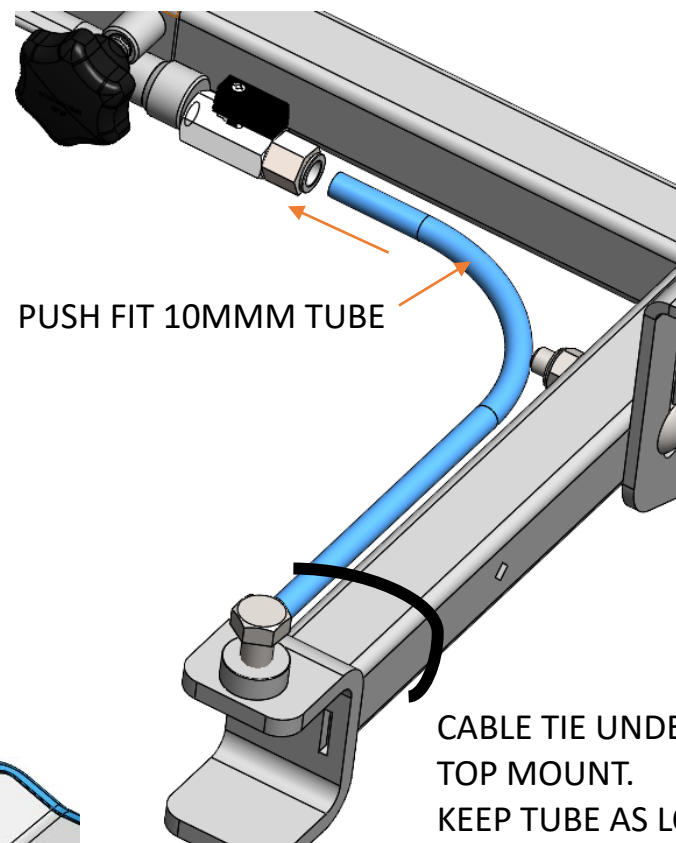
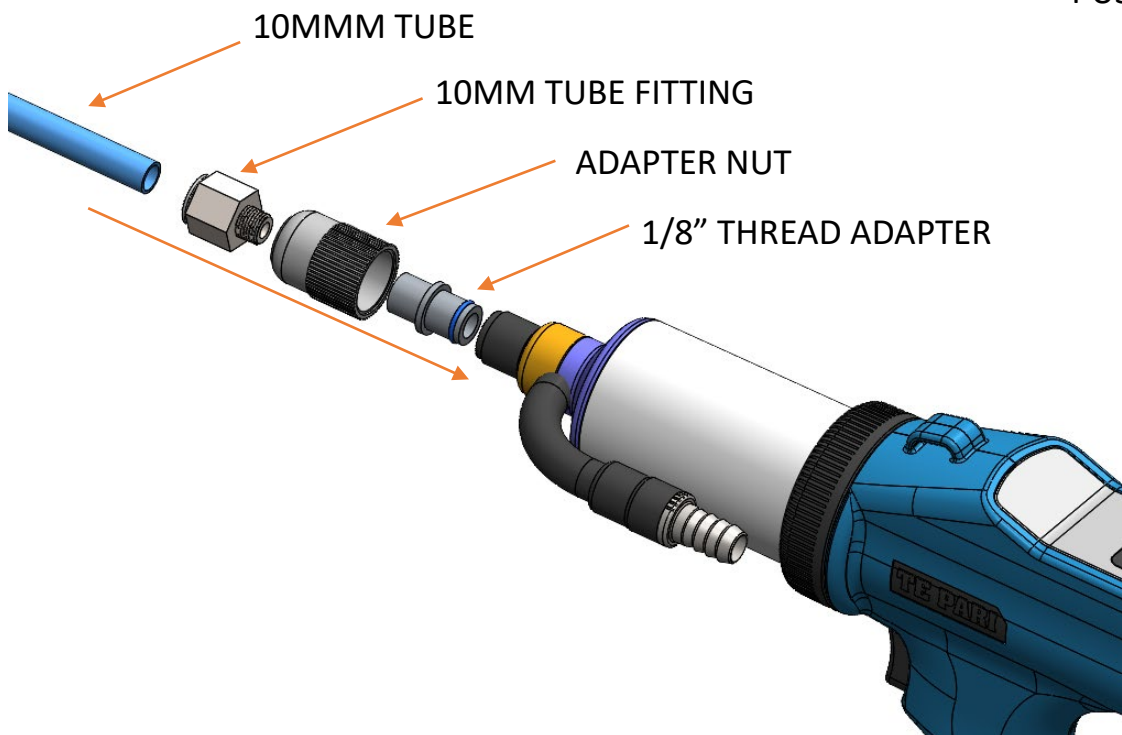
**Phone** 01738 505 993

**Email** [sales.uk@tepari.com](mailto:sales.uk@tepari.com)

**Freephone** 0800 249 4568

# ATTACHING HOISING

Ensure all fittings are clean from dust and fluids before attaching. The thread adapter and 10mm tube fitting have O rings for sealing. Do not over tighten. Push hose into fittings. Hose will not pull out if correctly fitted. To remove hose push in ring on the end of the 10mm fitting and pull hose.



**CABLE TIE UNDER TOP MOUNT. KEEP TUBE AS LOW AS POSSIBLE.**

## TE PARI PRODUCTS [www.tepari.com](http://www.tepari.com)

### NEW ZEALAND

PO Box 25, 9 Endeavour Crescent, Oamaru, 9400  
**Phone** 03 433 0077  
**Email** [sales@tepari.com](mailto:sales@tepari.com)  
**FREEPHONE** 0800 837 274

### AUSTRALIA

172 Jersey Drive, Epping, VIC, 3076  
**Phone** 03 8657 0015  
**Email** [sales.au@tepari.com](mailto:sales.au@tepari.com)  
**Freephone** 1800 650 682

### UNITED STATES

14250 Judicial Road, Burnsville MN 55306  
**Phone** 952 209 7255  
**Email** [sales.usa@tepari.com](mailto:sales.usa@tepari.com)  
**Freephone** 800 315 0433

### UNITED KINGDOM

South Inchmichael Business Park, Errol, PH2 7SP  
**Phone** 01738 505 993  
**Email** [sales.uk@tepari.com](mailto:sales.uk@tepari.com)  
**Freephone** 0800 249 4568

# TROUBLE SHOOTING

The Quikdose System has no valves and relies on gravity and fluid tension to prevent from dripping. Below table will help identify any issues in operation.

| Issue                              | Probable cause                                     | Remedy  |
|------------------------------------|--|---|
| No fluid dispensed from spray bar. | Revolution Gun not turned on.                      | Turn on gun.  |
|                                    | Revolution Gun not primed.                         | Prime gun.  |
|                                    | Low fluid level in drench gun.                     | Fill drench container.  |
|                                    | Ports in spray bar clogged.                        | Disconnect from drench gun and flush spray bar with methylated sprits or isopropyl alcohol.<br><br><b>Note: if using the Revolution Gun to flush the system with above fluids it is important to re grease the piston seals. Refer to Revolution Gun manual for cleaning procedure.</b> |
|                                    | Spray bar tap closed.                              | Open supplied spray bar tap.  |
| Spray bar drips during operation.  | Air entering the system.                           | Check all fittings are airtight. *  |
|                                    | Spray bar not level.                               | Use spirt level to the applicator frame is level.   |
|                                    | Supplied hose mounted too high above the spray bar | Readjust the hose so that it is fixed under the top mount bracket.  |

\* Competitor's manual guns will require a custom fitting between gun and supplied hose.  
Any custom fitting **must** provide an airtight seal otherwise dripping will occur.

## TE PARI PRODUCTS [www.tepari.com](http://www.tepari.com)

### NEW ZEALAND

PO Box 25, 9 Endeavour Crescent, Oamaru, 9400  
**Phone** 03 433 0077  
**Email** [sales@tepari.com](mailto:sales@tepari.com)  
**FREEPHONE** 0800 837 274

### AUSTRALIA

172 Jersey Drive, Epping, VIC, 3076  
**Phone** 03 8657 0015  
**Email** [sales.au@tepari.com](mailto:sales.au@tepari.com)  
**Freephone** 1800 650 682

### UNITED STATES

14250 Judicial Road, Burnsville MN 55306  
**Phone** 952 209 7255  
**Email** [sales.usa@tepari.com](mailto:sales.usa@tepari.com)  
**Freephone** 800 315 0433

### UNITED KINGDOM

South Inchmichael Business Park, Errol, PH2 7SP  
**Phone** 01738 505 993  
**Email** [sales.uk@tepari.com](mailto:sales.uk@tepari.com)  
**Freephone** 0800 249 4568